

WAAS CH <b>58105</b> <b>W19A</b>	APP CRS <b>191°</b>	Rwy ldg <b>11500</b> TDZE <b>302</b> Apt Elev <b>312</b>
--	------------------------	--

# RNAV (GPS) Y RWY 19L

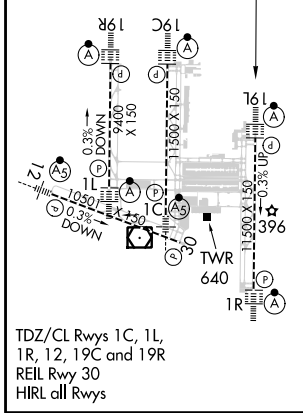
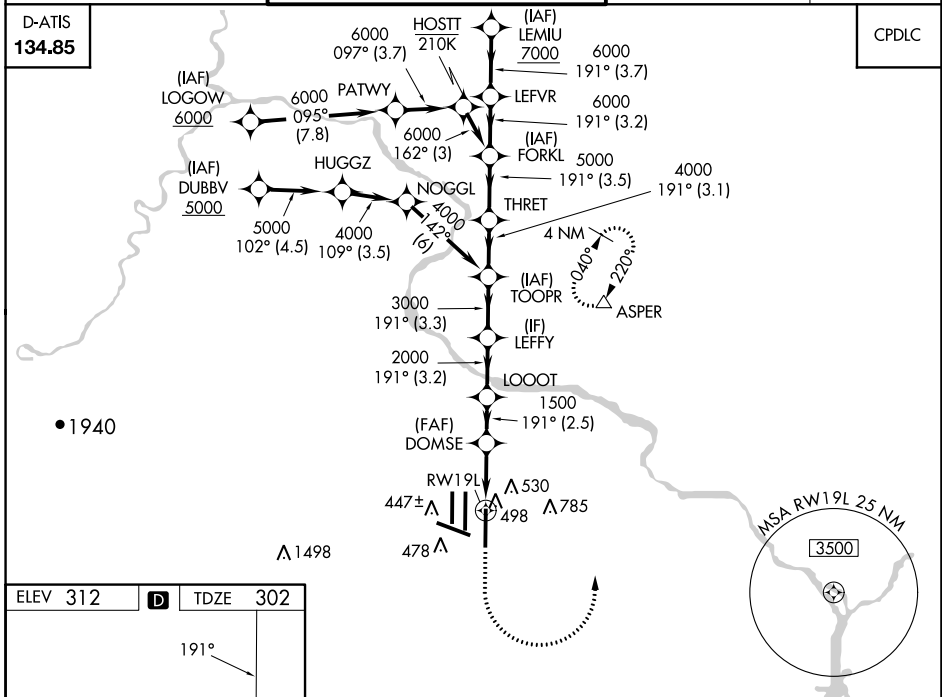
WASHINGTON DULLES INTL (IAD)

RNP APCH - GPS.	ALSF-2	MISSED APPROACH: Climb to 800 then climbing left turn to 3000 direct ASPER and hold.
<p>Simultaneous approach authorized. LNAV procedure NA during simultaneous operations.</p> <p>For uncompensated Baro-VNAV systems, procedure NA below -13°C or above 54°C.</p> <p>Use of FD or AP required during simultaneous operations.</p> <p>*RVR 1800 authorized with use of FD or AP or HUD to DA.</p>		

POTOMAC APP CON <b>120.45 306.925</b> (241°-330°) <b>128.525 306.925</b> (091°-240°) <b>126.1 338.25</b> (331°-090°)	DULLES TOWER <b>120.1 317.8</b> (Rwys 1R/19L) <b>120.25 348.6</b> (Rwy 1C/19C) <b>134.425 348.6</b> (Rwys 1L/19R and 12/30)	GND CON <b>121.9 317.8</b> (EAST) <b>121.625 348.6</b> (WEST)	CLNC DEL <b>135.7 317.8</b>
---	--	---	--------------------------------

D-ATIS <b>134.85</b>
-------------------------

CPDLC



800	3000	ASPER	VGSi and RNAV glidepath not coincident (VGSi Angle 3.00/TCH 75).					
			DOMSE	TOOPR	THRETT	FORKL	LEFFV	LEMU
			1.2 NM 1500	LOOOT	LEFFY	5000	6000	7000
			RW19L	2000	3000	4000	6000	GP 3.00° TCH 55
			1.2	2.4	2.5	3.2	3.3	3.1
			2.5	3.2	3.3	3.1	3.5	3.2
			3.2	3.3	3.1	3.5	3.2	3.7
CATEGORY	A		B		C		D	
LPV DA*	502/24 200 (200-½)							
LNAV/VNAV DA	760/45 458 (500-¾)							
LNAV MDA	760/24 458 (500-½)		760/45 458 (500-¾)		760/45 458 (500-¾)		1180-2¾ 868 (900-2¾)	
CIRCLING	940-1 628 (700-1)		940-1¾ 628 (700-1¾)		1180-2¾ 868 (900-2¾)			

NE-3, 03 OCT 2024 to 31 OCT 2024

NE-3, 03 OCT 2024 to 31 OCT 2024