

APP CRS	Rwy Idg	<b>9400</b>
<b>011°</b>	TDZE	<b>296</b>
	Apt Elev	<b>312</b>

# RNAV (RNP) Z RWY 1L

WASHINGTON DULLES INTL (IAD)

RNP AR APCH - GPS.

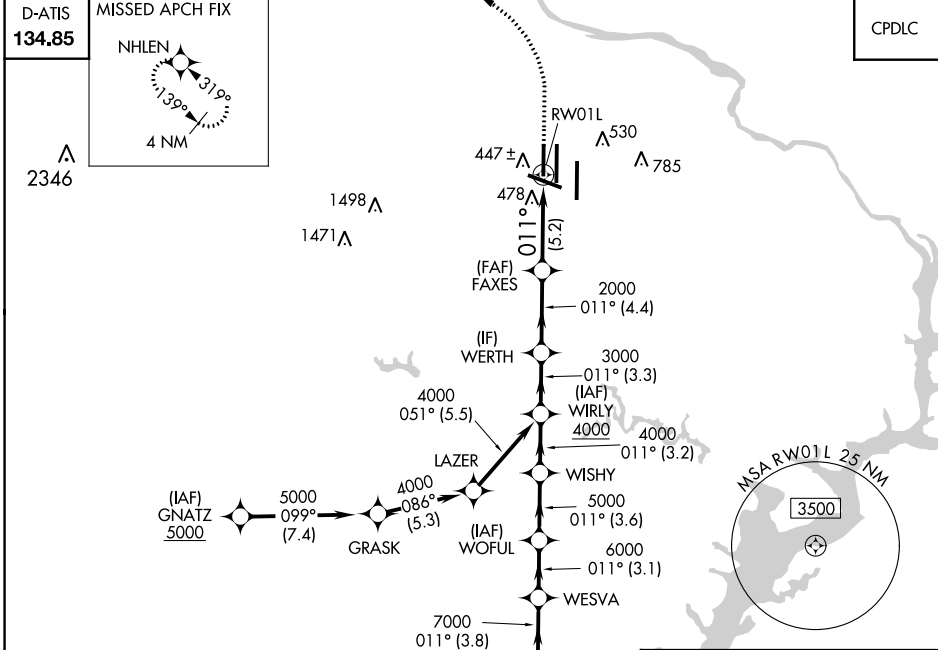
ALSF-2



MISSED APPROACH: Climb to 800 then climbing left turn to 3000 direct NHLEN and hold.

▼ For uncompensated Baro-VNAV systems, procedure NA below -13°C or above 54°C. Simultaneous approach authorized. For inop ALS, increase RNP 0.11 all Cats visibility to RVR 4500 and RNP 0.30 all Cats visibility to RVR 6000.

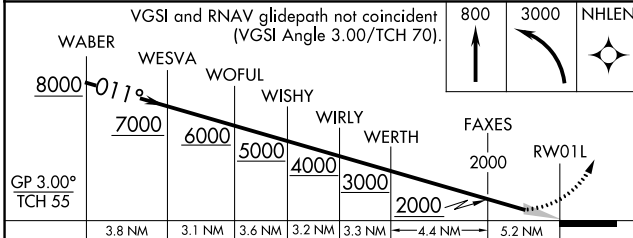
POTOMAC APP CON <b>120.45 306.925</b> (241°-330°) <b>128.525 306.925</b> (091°-240°) <b>126.1 338.25</b> (331°-090°)	DULLES TOWER <b>120.1 317.8</b> (Rwy 1R/19L) <b>120.25 348.6</b> (Rwy 1C/19C) <b>134.425 348.6</b> (Rwys 1L/19R and 12/30)	GND CON <b>121.9 317.8</b> (EAST) <b>121.625 348.6</b> (WEST)	CLNC DEL <b>135.7 317.8</b>
---	---	---	--------------------------------



NE-3, 08 AUG 2024 to 05 SEP 2024

NE-3, 08 AUG 2024 to 05 SEP 2024

ELEV 312	TDZE 296
----------	----------



CATEGORY	A	B	C	D
RNP 0.11 DA		572/24	276 (300-½)	
RNP 0.30 DA		710/40	414 (400-¾)	

## AUTHORIZATION REQUIRED

