

(PRTZL.PRTZL1) 24081

AL-5100 (FAA)

WASHINGTON DULLES INTL (IAD)  
WASHINGTON, DC

# PRTZL ONE ARRIVAL (RNAV)

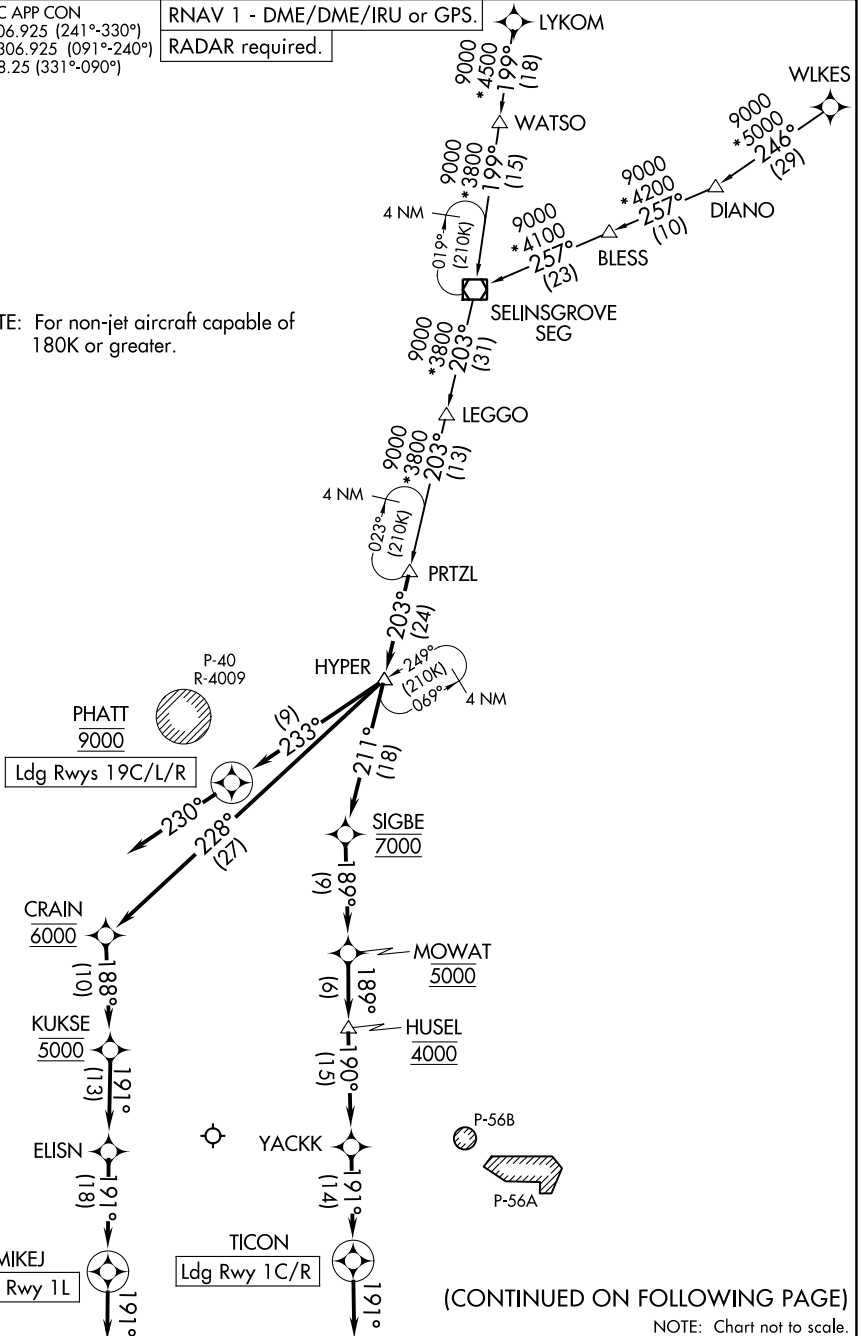
POTOMAC APP CON  
120.45 306.925 (241°-330°)  
128.525 306.925 (091°-240°)  
126.1 338.25 (331°-090°)  
D-ATIS  
134.85

RNAV 1 - DME/DME/IRU or GPS.

RADAR required.

LYKOM

NOTE: For non-jet aircraft capable of 180K or greater.



NE-3, 03 OCT 2024 to 31 OCT 2024

NE-3, 03 OCT 2024 to 31 OCT 2024

(CONTINUED ON FOLLOWING PAGE)

NOTE: Chart not to scale.

# PRTZL ONE ARRIVAL (RNAV)

(PRTZL.PRTZL1) 21MAR24

WASHINGTON, DC  
WASHINGTON DULLES INTL (IAD)