

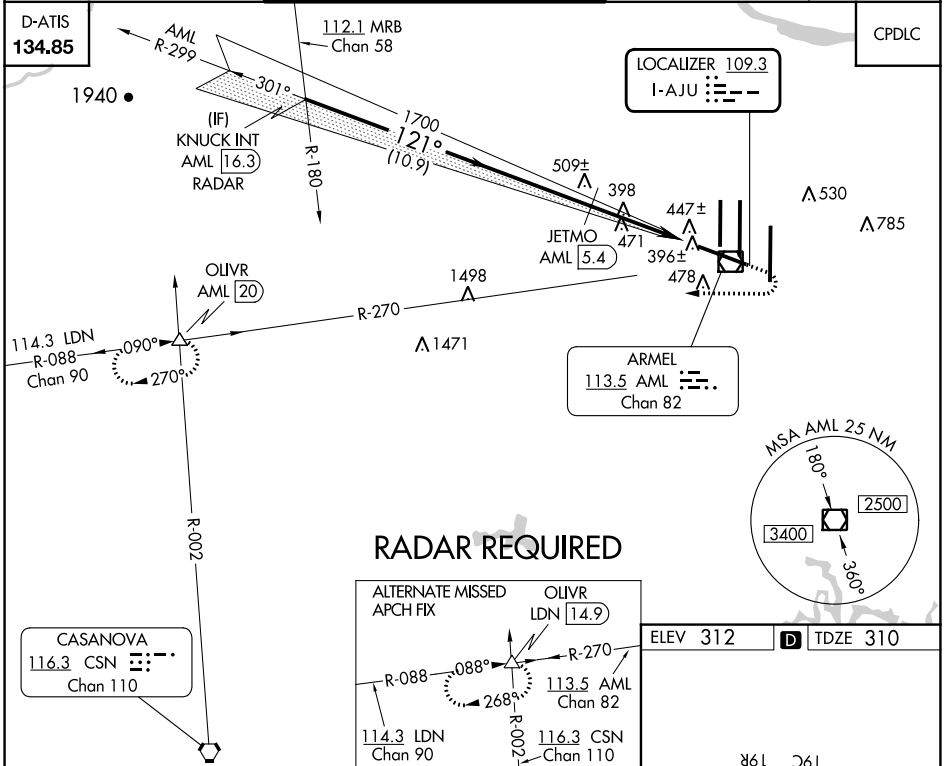
LOC I-AJU <b>109.3</b>	APP CRS <b>121°</b>	Rwy Idg <b>10501</b>
		TDZE <b>310</b>
		Apt Elev <b>312</b>

# ILS or LOC/DME RWY 12

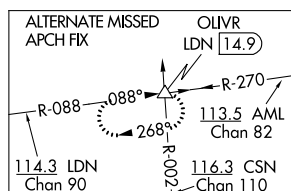
WASHINGTON DULLES INTL (IAD)

<b>▽</b> <b>▲</b>	DME from AML VOR/DME. Simultaneous reception of I-AJU and AML DME required.	MALSR 	MISSED APPROACH: Climb to 800 then climbing right turn to 5000 via heading 290° and AML VOR/DME R-270 to OLIVR INT/AML 20 DME and hold, continue climb-in-hold to 5000.
----------------------	---	-----------	---

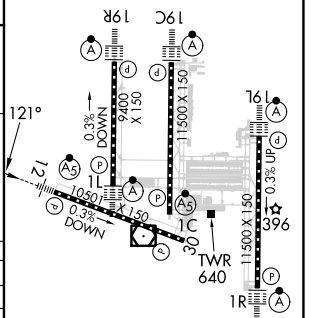
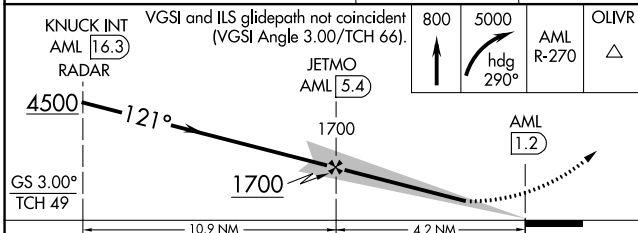
POTOMAC APP CON <b>120.45 306.925</b> (241°-330°) <b>128.525 306.925</b> (091°-240°) <b>126.1 338.25</b> (331°-090°)	DULLES TOWER <b>120.1 317.8</b> (Rwys 1R/19L) <b>120.25 348.6</b> (Rwy 1C/19C) <b>134.425 348.6</b> (Rwys 1L/19R and 12/30)	GND CON <b>121.9 317.8</b> (EAST) <b>121.625 348.6</b> (WEST)	CLNC DEL <b>135.7 317.8</b>
---	--	---	--------------------------------



## RADAR REQUIRED



ELEV 312	<b>D</b> TDZE 310
----------	-------------------



CATEGORY	A	B	C	D
S-ILS 12	510/18		200 (200-½)	
S-LOC 12	740/24	430 (500-½)	740/40	430 (500-¾)
CIRCLING	940-1	628 (700-1)	940-1¾ 628 (700-1¾)	1180-2¾ 868 (900-2¾)

TDZ/CL Rwys 1C, 1L, 1R, 12, 19C and 19R  
REIL Rwy 30  
HIRL all Rwys

NE-3, 08 AUG 2024 to 05 SEP 2024

NE-3, 08 AUG 2024 to 05 SEP 2024