

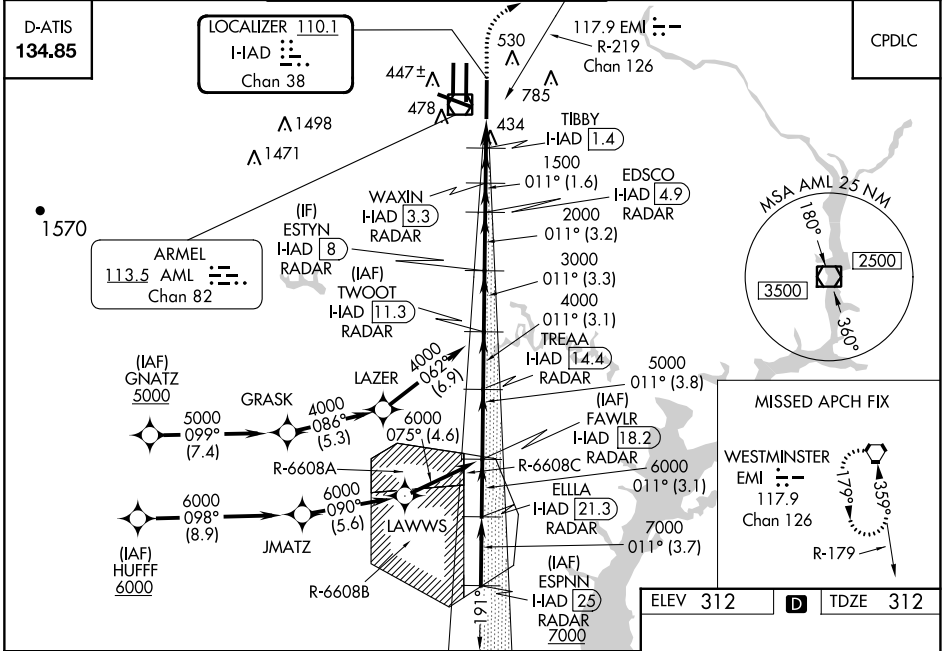
LOC/DME I-HAD 110.1 Chan 38	APP CRS 011°	Rwy ldg 11500
		TDZE 312
		Apt Elev 312

ILS or LOC RWY 1R

WASHINGTON DULLES INTL (IAD)

RNP APCH-GPS. From GNATZ, or HUFFF.	ALSF-2 ⊙	MISSED APPROACH: Climb to 800 then climbing right turn to 3000 on heading 060° and EMI VORTAC R-219 to EMI VORTAC and hold.
DME or RADAR required. DME required for LOC only. RADAR required for procedure entry at ESPNN.		
⚠ Simultaneous approach authorized.		

POTOMAC APP CON 120.45 306.925 (241°-330°) 128.525 306.925 (091°-240°) 126.1 338.25 (331°-090°)	DULLES TOWER 120.1 317.8 (Rwys 1R/19L) 120.25 348.6 (Rwys 1C/19C) 134.425 348.6 (Rwys 1L/19R and 12/30)	GN D CON 121.9 317.8 (EAST) 121.625 348.6 (WEST)	CLNC DEL 135.7 317.8
---	---	--	--------------------------------



VGSi and ILS glidepath not coincident (VGSi Angle 3.00/TCH 72).		800	3000	EMI
		↑	hdg 060°	R-219
		ESPNN I-HAD 25 RADAR ELLA I-HAD 21.3 RADAR FAWLR I-HAD 18.2 RADAR TREAA I-HAD 14.4 RADAR TWOOT I-HAD 11.3 RADAR ESTYN I-HAD 8 RADAR EDSCO I-HAD 4.9 RADAR WAXIN I-HAD 3.3 RADAR TIBBY I-HAD 1.4 RADAR I-HAD DME ANT. HAD 0.8		
7000		7000	6000	5000
6000		4000	3000	2000
GS 3.00° TCH 55		1500	900	0.7
3.7 NM	3.1 NM	3.8 NM	3.1 NM	3.3 NM
3.2 NM	1.6 NM	1.9 NM	0.7	0.8
CATEGORY	A	B	C	D
S-ILS 1R	512/18		200 (200-½)	
S-LOC 1R	700/24 388 (400-½)		700/35 388 (400-¾)	
CIRCLING	940-1 628 (700-1)		940-1¾ 628 (700-1¾) 1180-2¾ 868 (900-2¾)	
		TDZ/CL Rwys 1C, 1L, 1R, 12, 19C and 19R		REIL Rwy 30
		HIRL all Rwys		

NE-3, 03 OCT 2024 to 31 OCT 2024

NE-3, 03 OCT 2024 to 31 OCT 2024