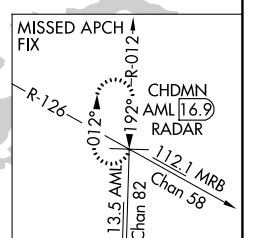
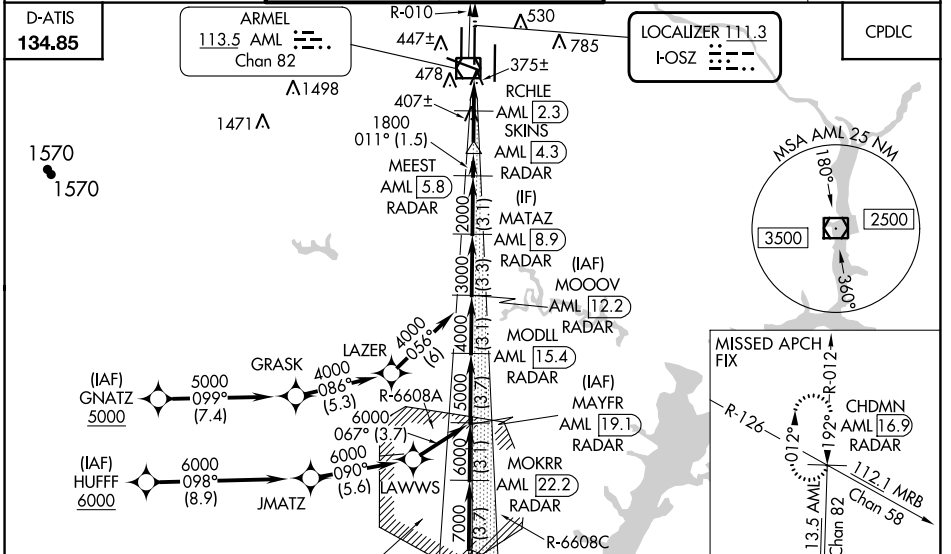


LOC I-OSZ 111.3	APP CRS 011°	Rwy ldg 11500
		TDZE 286
		Apt Elev 312

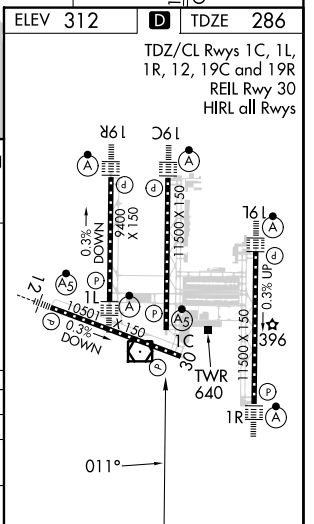
ILS or LOC RWY 1C

WASHINGTON DULLES INTL (IAD)

RNP APCH-GPS. From GNATZ or HUFFF.		MALSR 	MISSED APPROACH: Climb to 4000 on AML VOR/DME R-010 to CHDMN/AML 16.9 DME/RADAR and hold, continue climb-in-hold to 4000.
DME or RADAR required. DME required for LOC only. RADAR required for procedure entry at MUDDO.			
<p>Simultaneous approach authorized. For inop ALS, increase S-LOC Cats C/D visibility to RVR 5500. DME from AML VOR/DME. DME use requires simultaneous reception of I-OSZ and AML DME.</p>			
POTOMAC APP CON 120.45 306.925 (241°-330°) 128.525 306.925 (091°-240°) 126.1 338.25 (331°-090°)		DULLES TOWER 120.1 317.8 (Rwys 1R/19L) 120.25 348.6 (Rwys 1C/19C) 134.425 348.6 (Rwys 1L/19R and 12/30)	GND CON 121.9 317.8 (EAST) 121.625 348.6 (WEST)
		CLNC DEL 135.7 317.8	



MUDDO AML [30.8] RADAR	MOKRR AML [22.2] RADAR	MODLL AML [15.4] RADAR	MATAZ AML [8.9] RADAR	4000 AML R-010	CHDMN AML [16.9] RADAR
MAYFR AML [19.1] RADAR	MOOOV AML [12.2] RADAR	MEEST AML [5.8] RADAR	SKINS AML [4.3] RADAR	AML [0.4] VOR/DME	
GS 3.0° TCH 54	7000	6000	5000	4000	3000
VGSI and ILS glidepath not coincident (VGSI Angle 3.00/TCH 70).					
4.9 NM	3.7 NM	3.1 NM	3.3 NM	3.1 NM	1.5 NM
2 NM	2.6 NM				



CATEGORY	A	B	C	D
S-ILS 1C	486/18		200 (200-½)	
S-LOC 1C	640/24	354 (400-½)	640/30	354 (400-¾)
CIRCLING	940-1	628 (700-1)	940-1¾ 628 (700-1¾)	1180-2¾ 868 (900-2¾)

NE-3, 08 AUG 2024 to 05 SEP 2024

NE-3, 08 AUG 2024 to 05 SEP 2024