

LOC/DME I-HSU 110.75 Chan 44 (Y)	APP CRS 191°	Rwy ldg 9400 TDZE 278 Apt Elev 312
--	------------------------	--

ILS or LOC RWY 19R

WASHINGTON DULLES INTL (IAD)

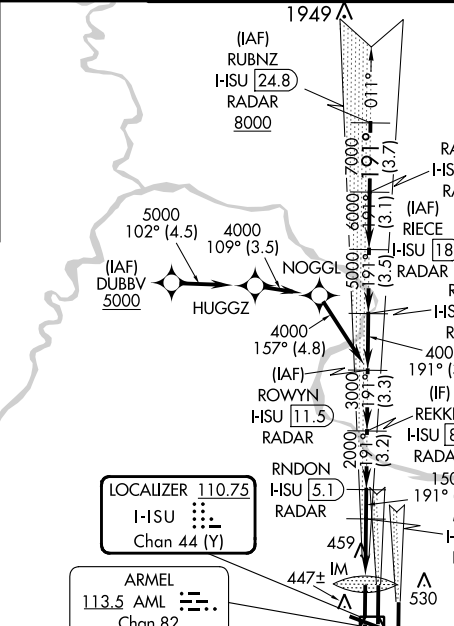
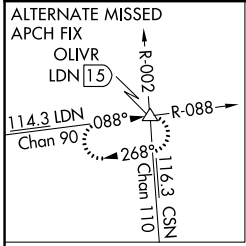
RNP APCH-GPS. From DUBBV.
DME or RADAR required. RADAR required for procedure entry at RUBNZ.
Simultaneous approach authorized.

ALSF-2
MISSED APPROACH: Climb to 800 then climbing right turn to 3000 on heading 280° and AML VOR/DME R-264 to AMOSS INT/AML 20.4 DME and hold.

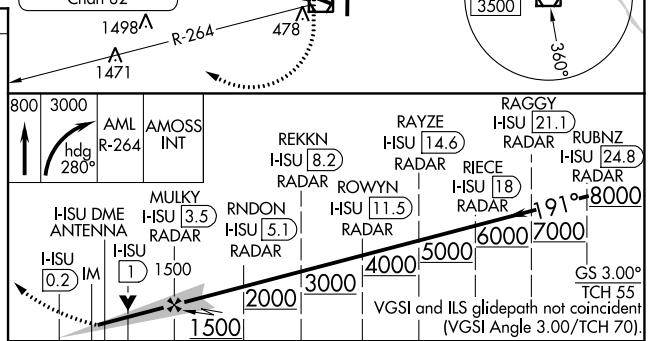
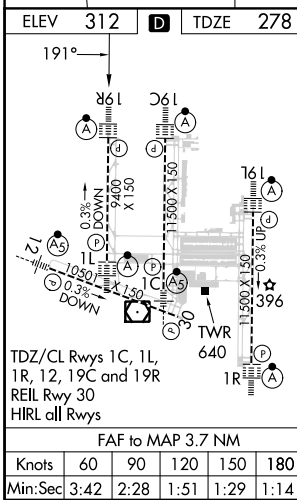
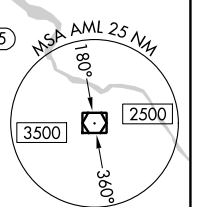
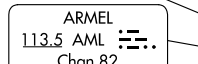
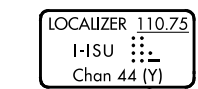
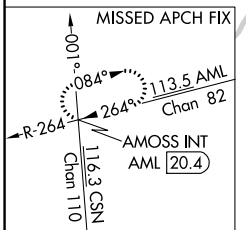
D-ATIS 134.85	POTOMAC APP CON 120.45 306.925 (241°-330°) 128.525 306.925 (091°-240°) 126.1 338.25 (331°-090°)
-------------------------	---

DULLES TOWER 120.1 317.8 (Rwy 1R/19L) 120.25 348.6 (Rwy 1C/19C) 134.425 348.6 (Rwys 1L/19R and 12/30)	
---	--

GND CON 121.9 317.8 (EAST) 121.625 348.6 (WEST)



CLNC DEL 135.7 317.8	CPDLC
--------------------------------	-------



0.1	1.1	2.5	1.6 NM	3.2	3.3	3.1	3.5	3.1	3.7
CATEGORY		A		B		C		D	
S-ILS 19R		478/18		200 (200-1/2)					
S-LOC 19R		720/24		442 (500-1/2)		720/45		442 (500-3/8)	
CIRCLING		940-1		628 (700-1)		940-1 3/4		1180-2 3/4 868 (900-2 3/4)	

NE-3, 03 OCT 2024 to 31 OCT 2024

NE-3, 03 OCT 2024 to 31 OCT 2024