

LOC/DME I-SGC <b>110.1</b> Chan <b>38</b>	APP CRS <b>191°</b>	Rwy ldg <b>11500</b> TDZE <b>302</b> Apt Elev <b>312</b>
---	------------------------	--

# ILS or LOC RWY 19L

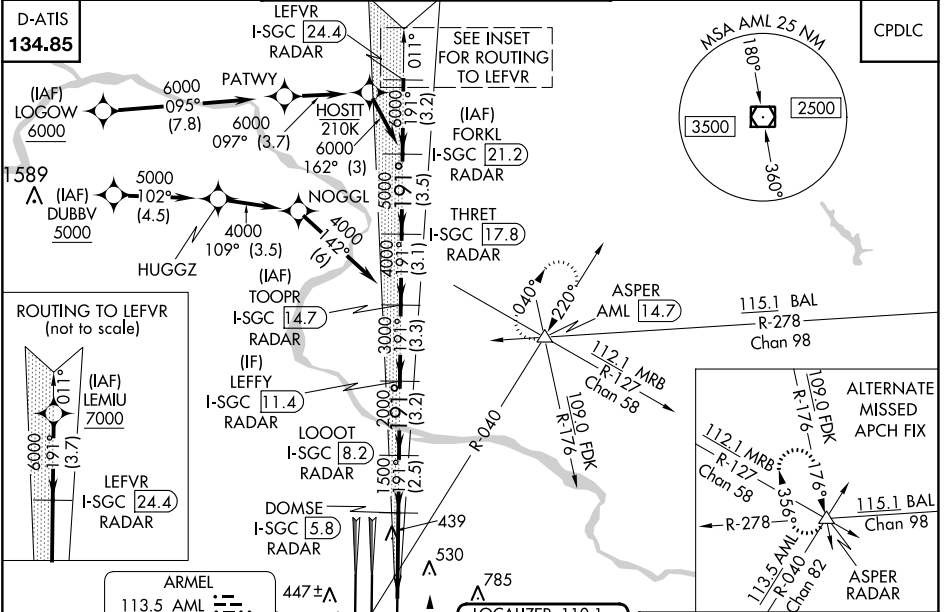
## WASHINGTON DULLES INTL (IAD)

RNP APCH - GPS. From LOGOV, or DUBBV, or LEMIU.  
DME or RADAR required. RADAR required for procedure entry at LEMIU.  
Simultaneous approach authorized.  
\*RVR 1800 authorized with use of FD or AP or HUD to DA.



MISSED APPROACH: Climb to 800 then climbing left turn to 3000 on heading 010° and on AML VOR/DME R-040 to ASPER INT/AML 14.7 DME and hold.

POTOMAC APP CON <b>120.45 306.925</b> (241°-330°) <b>128.525 306.925</b> (091°-240°) <b>126.1 338.25</b> (331°-090°)	DULLES TOWER <b>120.1 317.8</b> (Rwy 1R/19L) <b>120.25 348.6</b> (Rwy 1C/19C) <b>134.425 348.6</b> (Rwys 1L/19R and 12/30)	GND CON <b>121.9 317.8</b> (EAST) <b>121.625 348.6</b> (WEST)	CLNC DEL <b>135.7 317.8</b>
---	---	---	--------------------------------

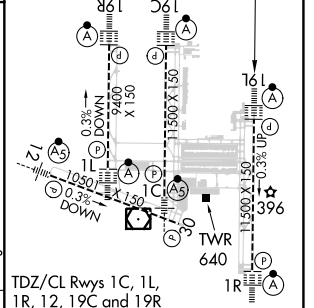
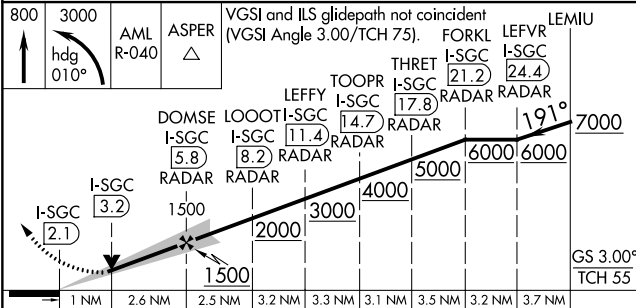


NE-3, 31 OCT 2024 to 28 NOV 2024

NE-3, 31 OCT 2024 to 28 NOV 2024

ARMEL 113.5 AML Chan 82	447 ± A	478 A	LOCALIZER 110.1 I-SGC Chan 38
-------------------------------	---------	-------	-------------------------------------

ELEV 312	TDZE 302
----------	----------



CATEGORY	A	B	C	D
S-ILS 19L *	502/24		200 (200-½)	
S-LOC 19L	700/24		398 (400-½)	
			700/35	
			398 (400-¾)	

TDZ/CL Rwys 1C, 1L, 1R, 12, 19C and 19R	REIL Rwy 30	HIRL all Rwys			
FAF to MAP 3.6 NM					
Knots	60	90	120	150	180
Min:Sec	3:36	2:24	1:48	1:26	1:12