

ILS RWY 1R (CAT II & III) WASHINGTON DULLES INTL (IAD)

| | | |
|--|------------------------|--|
| LOC/DME I-HAD 110.1 Chan 38 | APP CRS 011° | Rwy ldg 11500 TDZE 312 Apt Elev 312 |
|--|------------------------|--|

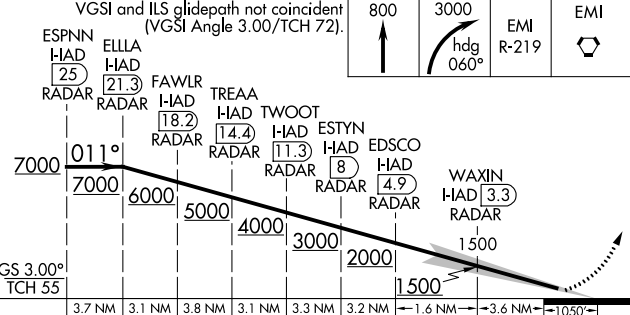
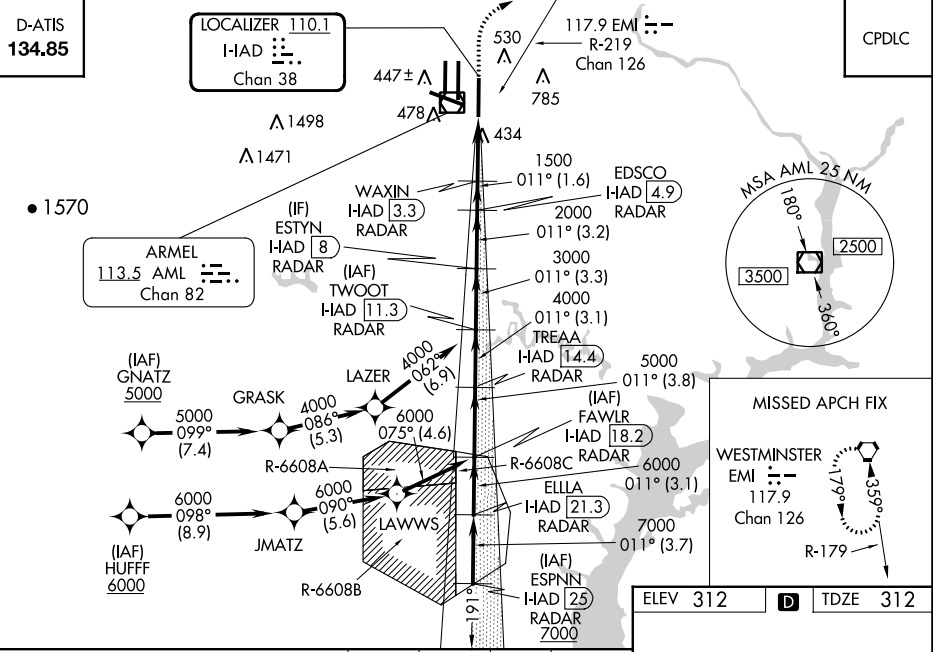
RNP APCH-GPS. From GNATZ, or HUFFF.
DME or RADAR required.
RADAR required for procedure entry at ESPNN.

Simultaneous approach authorized.



MISSED APPROACH: Climb to 800 then climbing right turn to 3000 on heading 060° and EMI VORTAC R-219 to EMI VORTAC and hold.

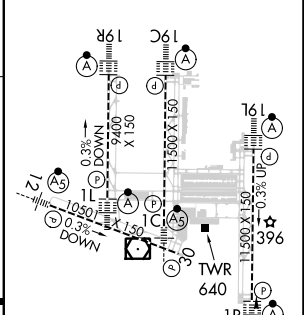
| | | | |
|---|---|--|--------------------------------|
| POTOMAC APP CON 120.45 306.925 (241°-330°) 128.525 306.925 (091°-240°) 126.1 338.25 (331°-090°) | DULLES TOWER 120.1 317.8 (Rwy 1R/19L) 120.25 348.6 (Rwy 1C/19C) 134.425 348.6 (Rwys 1L/19R and 12/30) | GN D CON 121.9 317.8 (EAST) 121.625 348.6 (WEST) | CLNC DEL 135.7 317.8 |
|---|---|--|--------------------------------|



| | | | | |
|----------|----------------------------|---|---|---|
| CATEGORY | A | B | C | D |
| S-ILS 1R | CAT II RA 94/12 100 DA 412 | | | |
| S-ILS 1R | CAT III RVR 06 | | | |

CATEGORY II & III ILS - SPECIAL AIRCREW & AIRCRAFT CERTIFICATION REQUIRED

| | | |
|----------|----------|----------|
| ELEV 312 | D | TDZE 312 |
|----------|----------|----------|



TDZ/CL Rwys 1C, 1L, 1R, 12, 19C and 19R
REIL Rwy 30
HIRL all Rwys

NE-3, 31 OCT 2024 to 28 NOV 2024

NE-3, 31 OCT 2024 to 28 NOV 2024