

LOC/DME I-SGC 110.1 Chan 38	APP CRS 191°	Rwy ldg 11500 TDZE 302 Apt Elev 312
---	------------------------	--

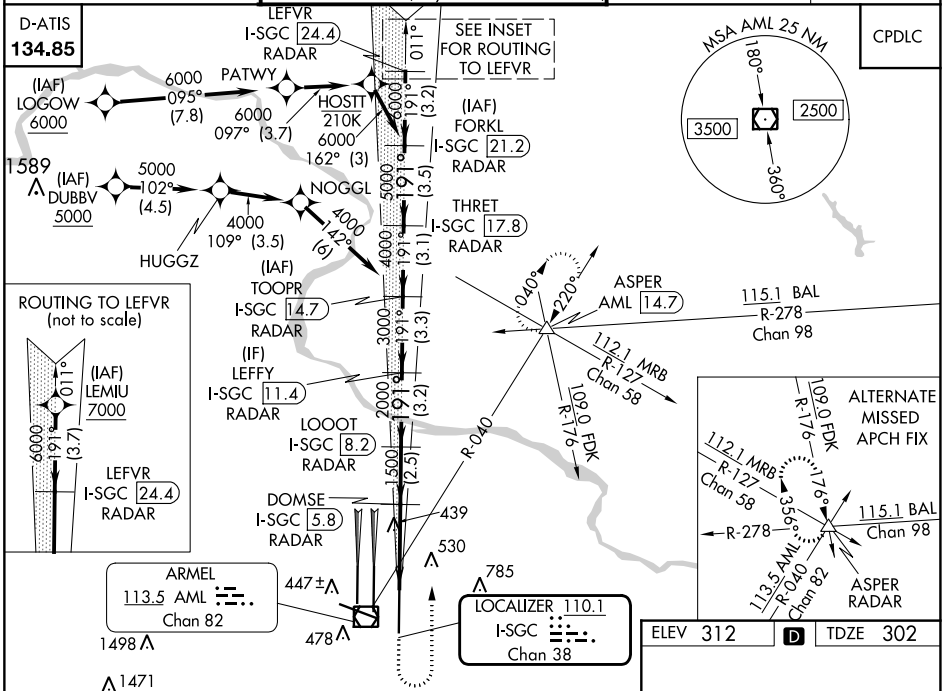
ILS RWY 19L (SA CAT II)

WASHINGTON DULLES INTL (IAD)

RNP APCH - GPS. From LOGOW, or DUBBV, or LEMIU.
DME or RADAR required. RADAR required for procedure entry at LEMIU.
Simultaneous approach authorized.
Requires specific OPSPEC, MSPCE, or LOA approval.

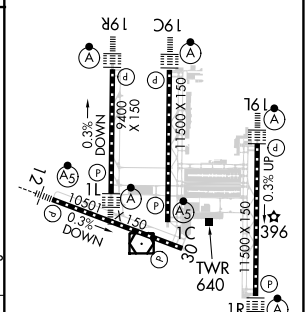
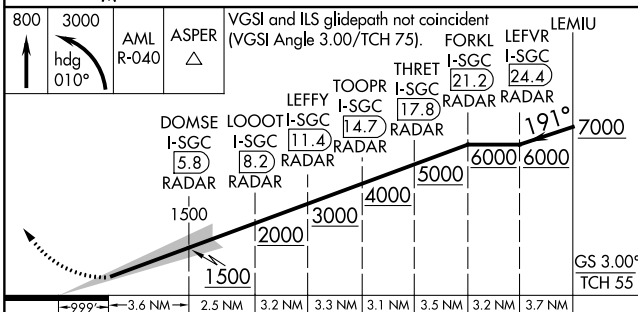
ALSF-2
MISSED APPROACH: Climb to 800 then climbing left turn to 3000 on heading 010° and on AML VOR/DME R-040 to ASPER INT/AML 14.7 DME and hold.

POTOMAC APP CON 120.45 306.925 (241°-330°) 128.525 306.925 (091°-240°) 126.1 338.25 (331°-090°)		DULLES TOWER 120.1 317.8 (Rwy 1R/19L) 120.25 348.6 (Rwy 1C/19C) 134.425 348.6 (Rwys 1L/19R and 12/30)		GND CON 121.9 317.8 (EAST) 121.625 348.6 (WEST)	CLNC DEL 135.7 317.8
---	--	---	--	---	--------------------------------



NE-3, 08 AUG 2024 to 05 SEP 2024

NE-3, 08 AUG 2024 to 05 SEP 2024



800	3000	AML R-040	ASPER	VGSI and ILS glidepath not coincident (VGSI Angle 3.00/TCH 75).	FORKL	LEFVR	LEMIU
-----	------	-----------	-------	---	-------	-------	-------

999	3.6 NM	2.5 NM	3.2 NM	3.3 NM	3.1 NM	3.5 NM	3.2 NM	3.7 NM
-----	--------	--------	--------	--------	--------	--------	--------	--------

CATEGORY	A	B	C	D
S-ILS 19L	RA 100/12 100 DA 402			

SA CATEGORY II ILS - SPECIAL AIRCREW & AIRCRAFT CERTIFICATION REQUIRED

GS 3.00° TCH 55
TDZ/CL Rwys 1C, 1L, 1R, 12, 19C and 19R
REIL Rwy 30
HIRL all Rwys