

LOC I-DLX 111.3	APP CRS 191°	Rwy Idg 11089 TDZE 272 Apt Elev 312
---------------------------	------------------------	--

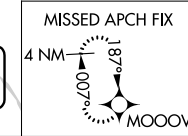
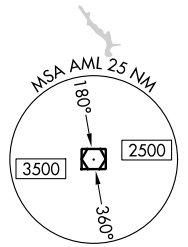
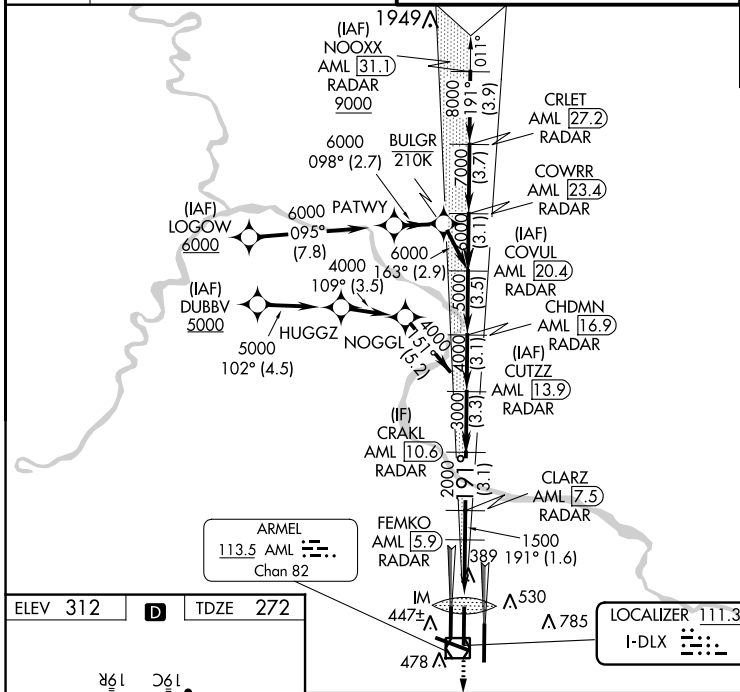
ILS RWY 19C (CAT II & III)

WASHINGTON DULLES INTL (IAD)

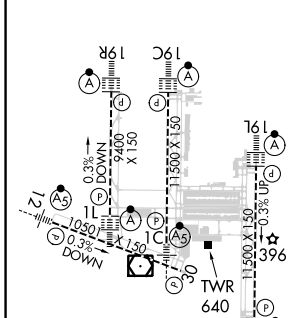
RNP APCH - GPS.		ALSF-2 	MISSED APPROACH: Climb to 3000 direct MOOOV and hold.
RADAR required for procedure entry at NOOXX. DME or RADAR required.			
Simultaneous approach authorized. DME from AML VOR/DME. DME use requires simultaneous reception of I-DLX and AML DME.			

D-ATIS 134.85	POTOMAC APP CON 120.45 306.925 (241°-330°) 128.525 306.925 (091°-240°) 126.1 338.25 (331°-090°)	DULLES TOWER 120.1 317.8 (Rwy 1R/19L) 120.25 348.6 (Rwy 1C/19C) 134.425 348.6 (Rwys 1L/19R and 12/30)	GND CON 121.9 317.8 (EAST) 121.625 348.6 (WEST)
-------------------------	---	---	---

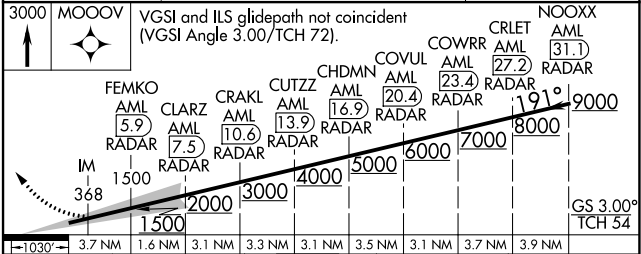
CLNC DEL 135.7 317.8	CPDLC
--------------------------------	-------



ELEV 312	D	TDZE 272
----------	----------	----------



REIL Rwy 30
HIRL all Rwys
TDZ/CL Rwys 1C, 1L, 1R,
12, 19C and 19R



1-1030	3.7 NM	3.1 NM	3.3 NM	3.1 NM	3.5 NM	3.1 NM	3.7 NM	3.9 NM
CATEGORY	A		B			C		D
S-ILS 19C	CAT II RA 110/12 100 DA 372							
S-ILS 19C	CAT IIIa RVR 07							
S-ILS 19C	CAT IIIb RVR 06							
S-ILS 19C	CAT IIIc NA							

CATEGORY II & III ILS - SPECIAL AIRCREW & AIRCRAFT CERTIFICATION REQUIRED

NE-3, 03 OCT 2024 to 31 OCT 2024

NE-3, 03 OCT 2024 to 31 OCT 2024