

APP CRS	Rwy Idg	<b>3328</b>
<b>033°</b>	TDZE	<b>9</b>
	Apt Elev	<b>10</b>

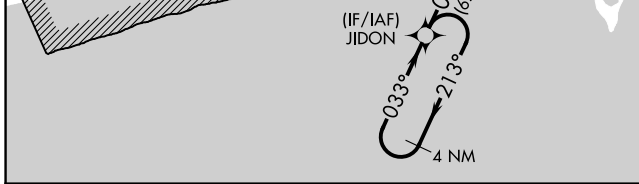
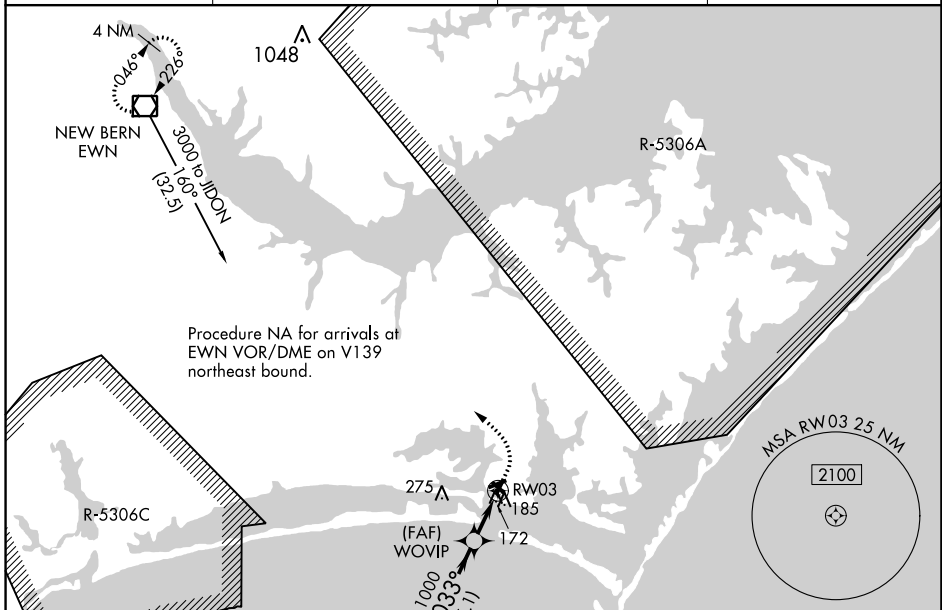
# RNAV (GPS) RWY 3

MICHAEL J SMITH FLD (MR.H)

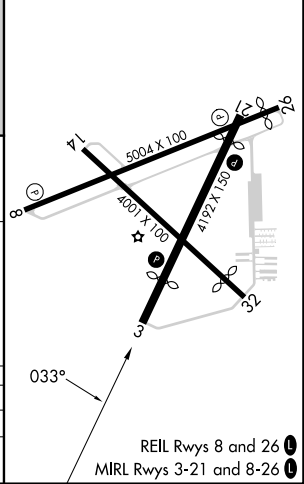
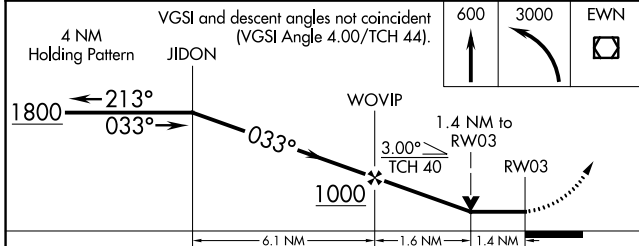
**⚠** Circling Rwy 8, 14, 32 NA at night. DME/DME RNP-0.3 NA. ATC clearance required to penetrate R-5306A and R-5306C. When local altimeter setting not received, use Cherry Point MCAS (Cunningham Fld) altimeter setting and increase all MDA 40 feet. Rwy 3 helicopter visibility reduction below 3/4 SM NA. VDP NA when using Cherry Point MCAS (Cunningham Fld) altimeter setting. Rwy 8, 14, 32 helicopter visibility reduction below 1 SM NA.

**MISSED APPROACH:** Climb to 600 then climbing left turn to 3000 direct EWN VOR/DME and hold.

ASOS	CHERRY POINT APP CON	CLNC DEL	UNICOM
<b>135.375</b>	<b>132.575 299.6</b>	<b>125.65</b>	<b>122.8 (CTAF) 0</b>



ELEV 10	TDZE 9
---------	--------



CATEGORY	A	B	C	D
LNAV MDA	480-1	471 (500-1)		NA
CIRCLING	540-1	530 (600-1)		NA

SE-2, 31 OCT 2024 to 28 NOV 2024

SE-2, 31 OCT 2024 to 28 NOV 2024