


WAAS CH 53706 W13A	APP CRS 133°	Rwy Idg 7400 TDZE 1184 Apt Elev 1182
--	------------------------	---

RNAV (GPS) RWY 13

FALLS INTL/EINARSON FLD (INL)

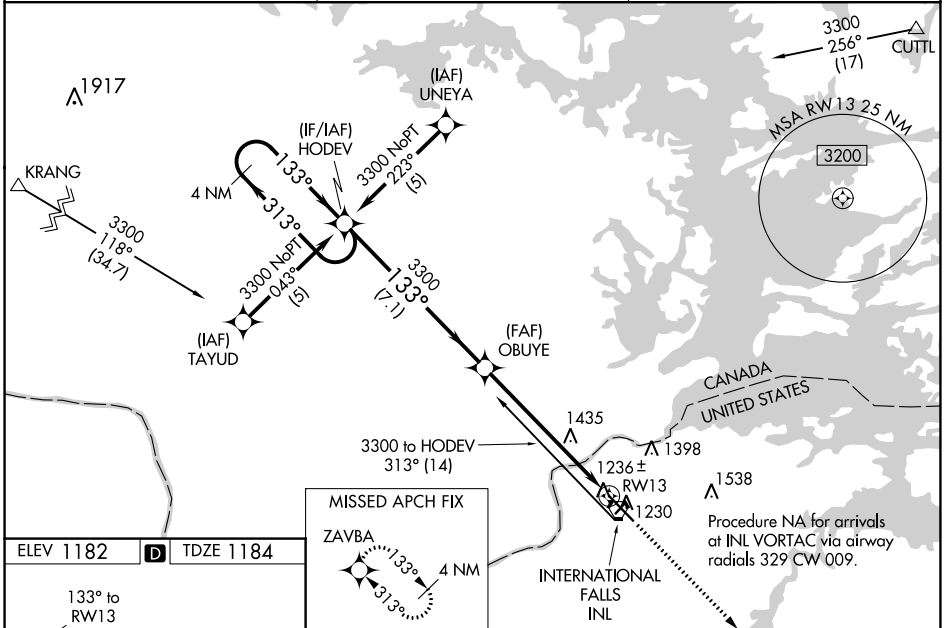
⚠ When local altimeter setting not received, use Baudette altimeter setting: increase LPV DA to 1561 feet and visibility all Cats ¼ SM; increase LNAV/VNAV DA to 1796 feet and visibility all Cats ¾ SM; increase all MDAs 140 feet and visibility LNAV Cat C and D and Circling Cat C and D ½ SM. For inop MALS R when using Baudette altimeter setting, increase LPV visibility ½ mile all Cats, inop table does not apply to LNAV/VNAV. VDP NA when using Baudette altimeter setting. Baro-VNAV NA when using Baudette altimeter setting. Circling to Rwy 4-22 NA at night. For uncompensated Baro-VNAV systems, LNAV/VNAV NA below -17°C (2°F) or above 47°C (116°F). DME/DME RNP-0.3 NA.

MALS R

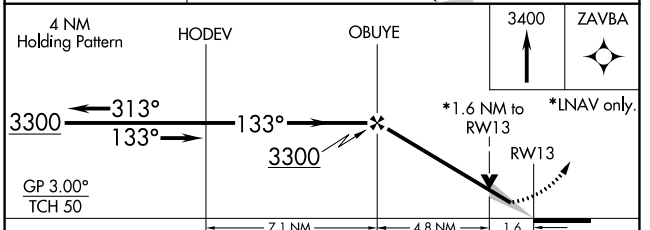
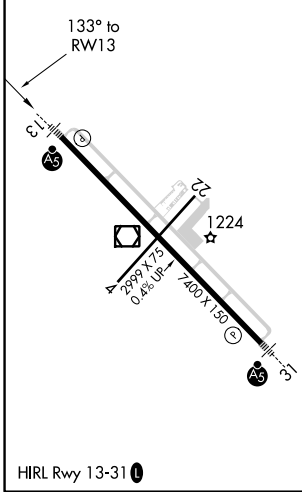


MISSED APPROACH:
Climb to 3400 direct ZAVBA and hold.

ASOS 120.0	MINNEAPOLIS CENTER 120.9 377.1	UNICOM 122.8 (CTAF)
----------------------	--	-------------------------------



ELEV 1182	D	TDZE 1184
-----------	----------	-----------



CATEGORY	A	B	C	D
LPV DA		1434-½	250 (300-½)	
LNAV/VNAV DA		1669-1¼	485 (500-1¼)	
LNAV MDA	1760-½	576 (600-½)	1760-1	1760-1¼
			576 (600-1)	576 (600-1¼)
CIRCLING	1760-1	578 (600-1)	1900-2	1900-2¼
			718 (800-2)	718 (800-2¼)

NC-1, 03 OCT 2024 to 31 OCT 2024

NC-1, 03 OCT 2024 to 31 OCT 2024