

LOC I-INL <b>111.95</b>	APP CRS <b>313°</b>	Rwy Idg TDZE Apt Elev	<b>7400</b> <b>1166</b> <b>1182</b>
----------------------------	------------------------	-----------------------------	---

# ILS or LOC RWY 31

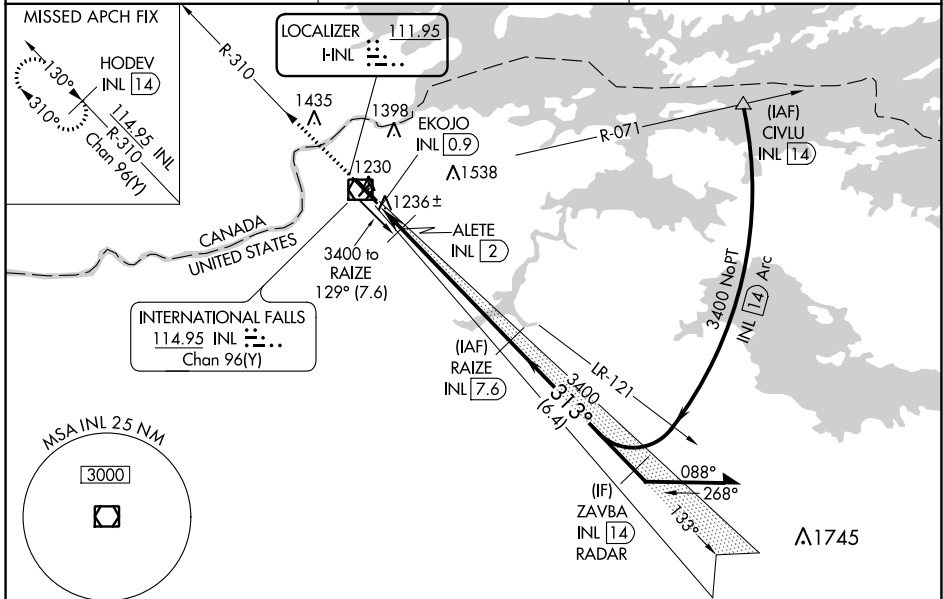
FALLS INTL/EINARSON FLD (INL)

DME required.

**MAISR**

MISSED APPROACH: Climb to 3300 on INL VOR/DME R-310 to HODEV/INL 14 DME and hold.

ASOS <b>120.0</b>	MINNEAPOLIS CENTER <b>120.9 377.1</b>	UNICOM <b>122.8 (CTAF)</b>
----------------------	--	-------------------------------



ELEV 1182	<b>D</b>	TDZE 1166	3300	HODEV INL 14	RAIZE INL 7.6	Remain within 10 NM			
INL R-310		3400		3400		GS 3.00° TCH 45			
EKOJO INL 0.9		1620		3400		313°			
ALETE INL 2		3400		3400		ZAVBA INL 14 RADAR			
0.2		1.1 NM		5.6 NM		6.4 NM			
CATEGORY	A		B		C		D		
S-ILS 31	1366-½		200 (200-½)						
S-LOC 31	1620-½		454 (500-½)		1620-¾		454 (500-¾)		
<b>C</b> CIRCLING	1620-1 438 (500-1)		1680-1 498 (500-1)		1900-2 718 (800-2)		1900-2¼ 718 (800-2¼)		
ALETE FIX MINIMUMS#									
S-LOC 31	1500-½		334 (400-½)						
<b>C</b> CIRCLING	1620-1 438 (500-1)		1680-1 498 (500-1)		1900-2 718 (800-2)		1900-2¼ 718 (800-2¼)		

NC-1, 31 OCT 2024 to 28 NOV 2024

NC-1, 31 OCT 2024 to 28 NOV 2024