

APP CRS	Rwy Idg	<b>6506</b>
<b>182°</b>	TDZE	<b>407</b>
	Apt Elev	<b>411</b>

# RNAV (GPS) RWY 18L

SOUTHERN ILLINOIS (MDH)

RNP APCH.

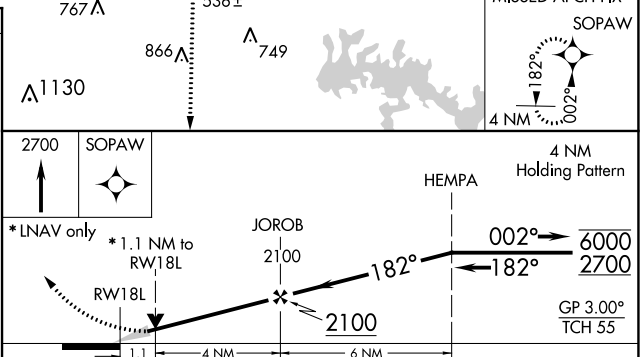
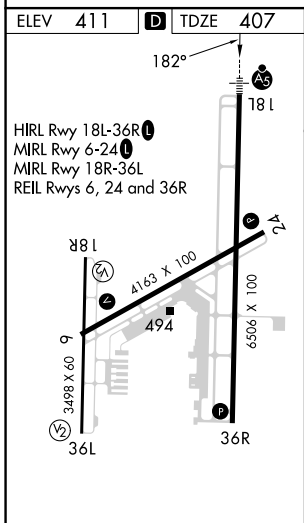
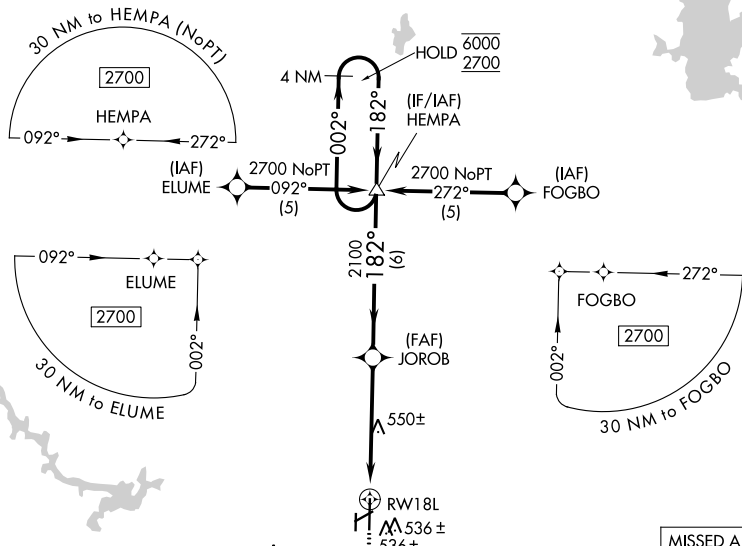
**▼** Circling Rwy 6, 36L NA at night.  
**▲** For uncompensated Baro-VNAV systems,  
 LNAV/VNAV NA below -15°C or above 54°C.

MALSR



**MISSED APPROACH:**  
 Climb to 2700 direct  
 SOPAW and hold.

ATIS <b>119.725</b>	KANSAS CITY CENTER <b>127.475 346.275</b>	SOUTHERN TOWER * <b>125.35 (CTAF) 0 322.4</b>	GND CON <b>121.8</b>	UNICOM <b>122.95</b>
------------------------	--	--	-------------------------	-------------------------



CATEGORY	A	B	C	D
LNAV/VNAV DA	804-5/8		397 (400-5/8)	
LNAV MDA	800-1/2	393 (400-1/2)	800-5/8	393 (400-5/8)
CIRCLING	900-1 489 (500-1)	920-1 509 (600-1)	1180-2 1/4 769 (800-2 1/4)	1180-2 1/2 769 (800-2 1/2)

EC-3, 31 OCT 2024 to 28 NOV 2024

EC-3, 31 OCT 2024 to 28 NOV 2024