

APP CRS	Rwy Idg	5819
229°	TDZE	296
	Apt Elev	306

RNAV (GPS) Y RWY 23

FREDERICK MUNI (FDK)

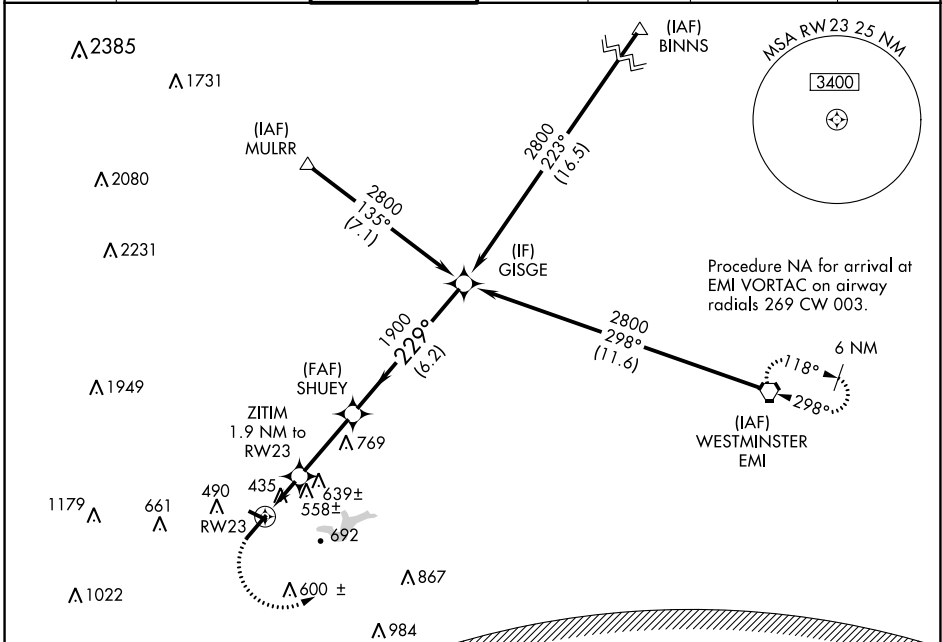
RNP APCH.

▼ Inop table does not apply to Cat C. Rwy 23 helicopter visibility reduction below 3/4 SM NA. Circling Rwy 30 NA at night.

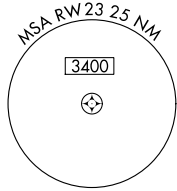
ODALS

MISSED APPROACH: Climbing left turn to 3000 direct EMI VORTAC and hold.

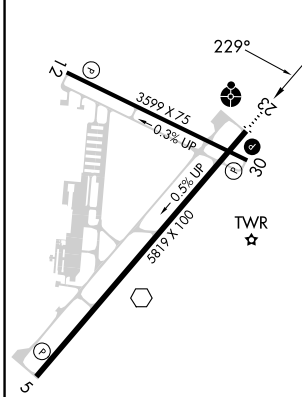
ATIS 124.875	POTOMAC APP CON 126.1 338.25	FREDERICK TOWER ★ 132.4 (CTAF) 0	GND CON 127.425	CLNC DEL 127.425	CLNC DEL 126.9 (When twr closed)	UNICOM 122.95
------------------------	--	--	---------------------------	----------------------------	---	-------------------------



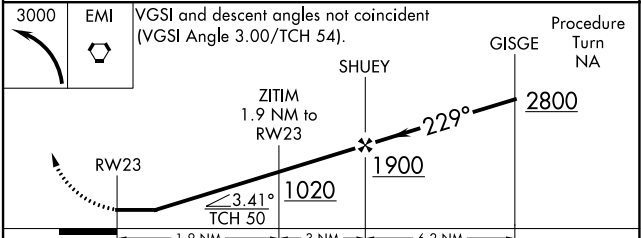
Procedure NA for arrival at EMI VORTAC on airway radials 269 CW 003.



ELEV 306	TDZE 296
----------	----------



WASHINGTON DC METROPOLITAN SFRA
WARNING -- WASHINGTON DC SFRA. CTC POTOMAC APP CON



CATEGORY	A	B	C	D
LNNAV MDA	820-3/4 524 (600-3/4)	820-1 524 (600-1 1/2)	820-1 1/2 524 (600-1 1/2)	820-1 3/4 524 (600-1 3/4)
C CIRCLING	920-1 614 (700-1)	1100-2 1/4 794 (800-2 1/4)	1200-2 3/4 894 (900-2 3/4)	

NE-3, 31 OCT 2024 to 28 NOV 2024

NE-3, 31 OCT 2024 to 28 NOV 2024