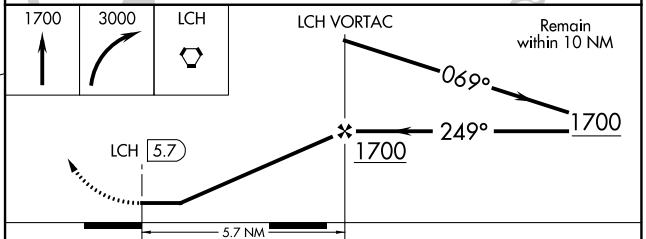
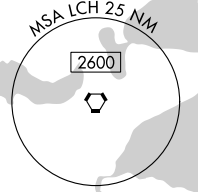
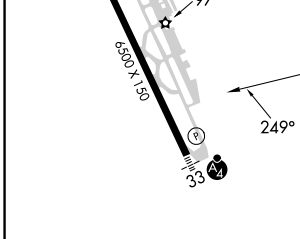
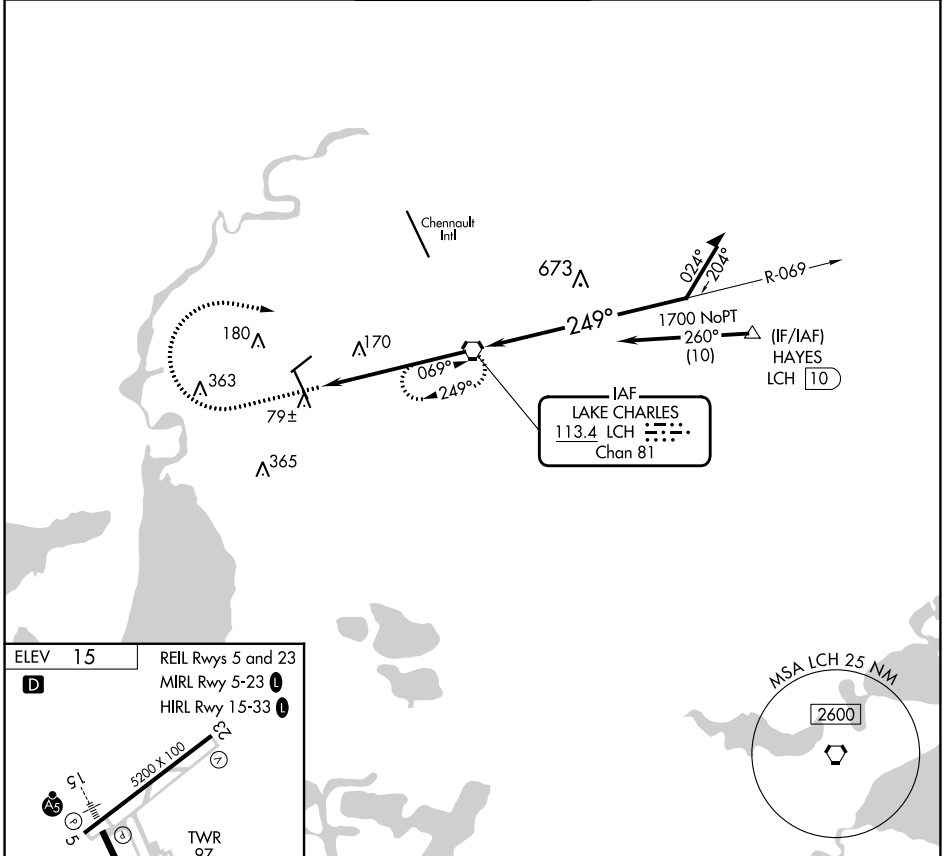


VORTAC LCH <b>113.4</b> Chan 81	APP CRS <b>249°</b>	Rwy Idg TDZE Apt Elev	<b>N/A</b> <b>N/A</b> <b>15</b>
---------------------------------------	------------------------	--------------------------	---------------------------------------

**VOR-A**  
LAKE CHARLES RGNL (LCH)

ASR	MISSED APPROACH: Climb to 1700 then climbing right turn to 3000 direct LCH VORTAC and hold, continue climb-in-hold 3000.				
-----	--	--	--	--	--

ATIS <b>118.75</b>	LAKE CHARLES APP CON* <b>119.35 353.75</b>	LAKE CHARLES TOWER* <b>120.7</b> (CTAF) <b>257.8</b>	GND CON <b>121.8</b>	CLNC DEL <b>126.25</b>	UNICOM <b>122.95</b>
-----------------------	---	---	-------------------------	---------------------------	-------------------------



FAF to MAP 5.7 NM					
Knots	60	90	120	150	180
Min:Sec	5:42	3:48	2:51	2:17	1:54

CATEGORY	A	B	C	D
<b>CIRCLING</b>	460-1 445 (500-1)	480-1 465 (500-1)	580-1½ 565 (600-1½)	680-2 665 (700-2)

SC-4, 31 OCT 2024 to 28 NOV 2024

SC-4, 31 OCT 2024 to 28 NOV 2024