

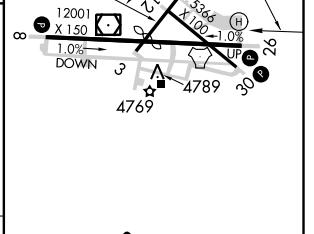
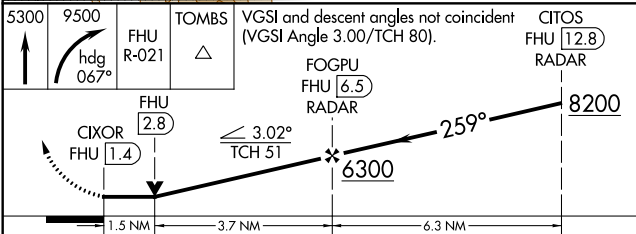
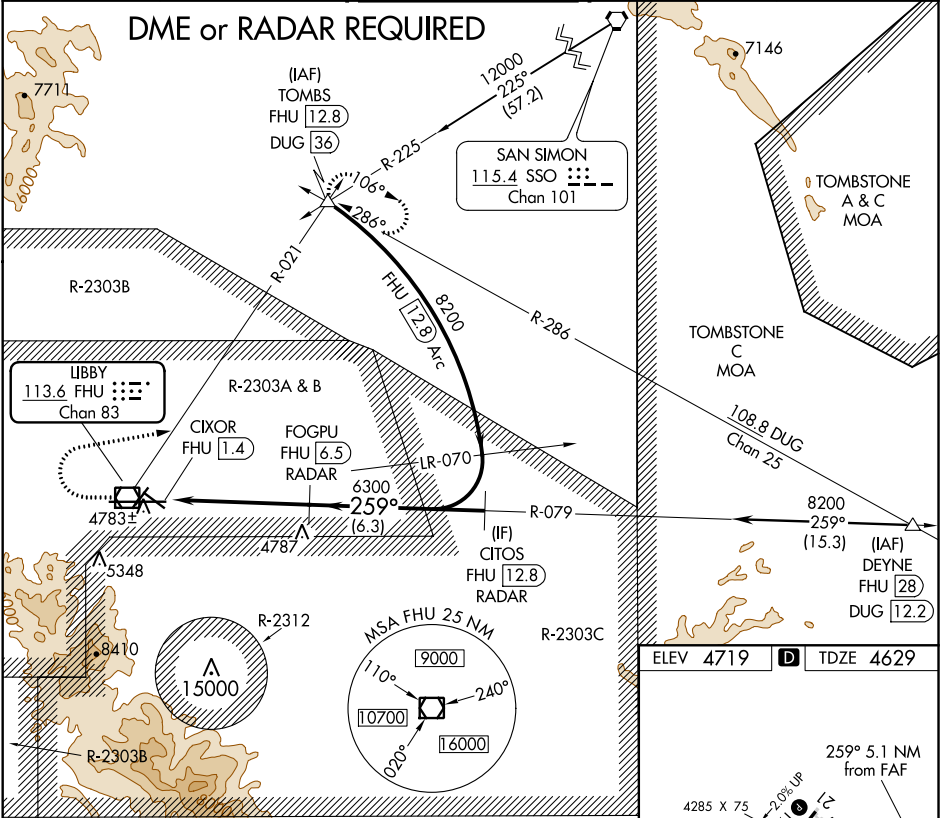
VOR/DME FHU 113.6 Chan 83	APP CRS 259°	Rwy Idg 12001 TDZE 4629 Apt Elev 4719
---	------------------------	--

VOR RWY 26

SIERRA VISTA MUNI-LIBBY AAF (FHU)

<p>ASR/PAR</p>	<p>Circling NA south of Rws 8 and 30. DME or RADAR required.</p>	<p>MISSED APPROACH: Climb to 5300 then climbing right turn to 9500 on heading 067° and FHU R-021 to TOMBS INT/ DUG 36 DME and hold, continue climb-in-hold to 9500.</p>
----------------	--	---

<p>ATIS 134.75 263.025</p>	<p>LIBBY AAF GCA* 127.05 254.35</p>	<p>LIBBY TOWER* 124.95 (CTAF) 284.75</p>	<p>GND CON 121.7 268.7</p>	<p>UNICOM 122.95</p>
---------------------------------------	--	---	---------------------------------------	---------------------------------



5300	9500	FHU R-021	TOMBS	VGSI and descent angles not coincident (VGSI Angle 3.00/TCH 80).	CITOS FHU 12.8 RADAR
		FHU 2.8		FOGPU FHU 6.5 RADAR	
		CIXOR FHU 1.4			
		1.5 NM	3.7 NM	6.3 NM	

HIRL Rwy 8-26					
MIRL Rws 3-21 and 12-30					
FAF to MAP 5.1 NM					
Knots	60	90	120	150	180
Min:Sec	5:06	3:24	2:33	2:02	1:42

SW-4, 25 FEB 2021 to 25 MAR 2021

SW-4, 25 FEB 2021 to 25 MAR 2021