

VOR/DME SBJ 112.9 Chan 76	APP CRS 061°	Rwy Idg 1923 TDZE 106 Apt Elev 106
---	------------------------	---

VOR RWY 8

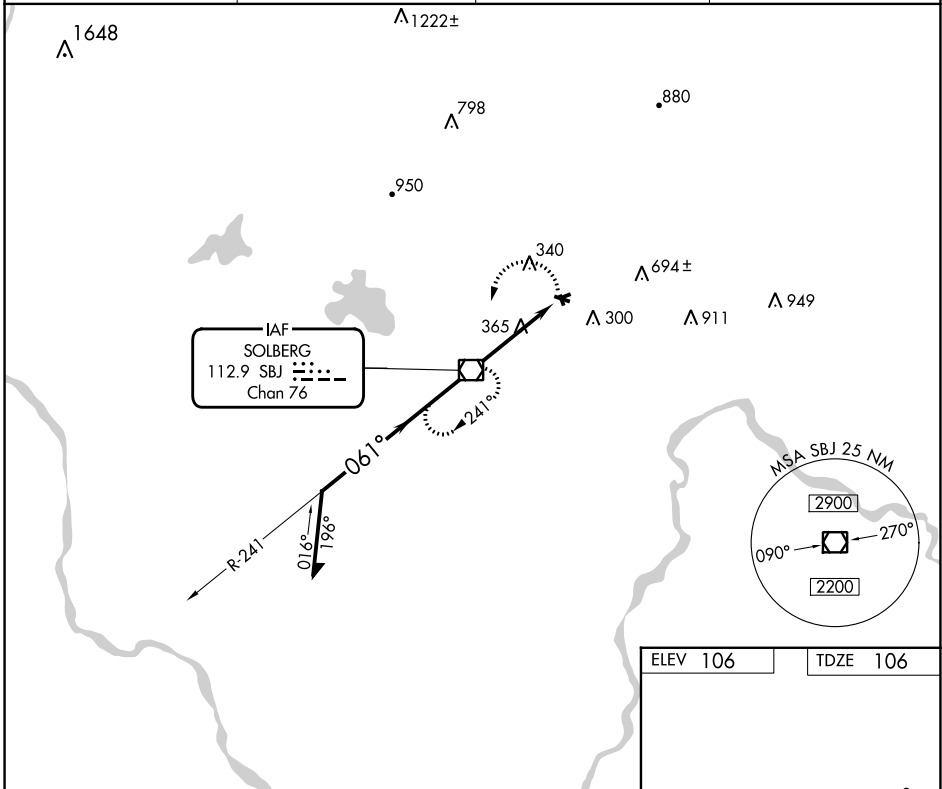
SOMERSET (SMQ)



Circling Rwy 8, 17, 26, 30 and 35 NA at night.
Rwy 8 helicopter visibility reduction below 1 SM NA.
Straight-in Rwy 8 NA at night.

MISSED APPROACH: Climbing left turn to 2100 direct SBJ VOR/DME and hold.

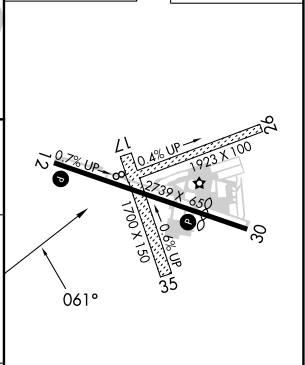
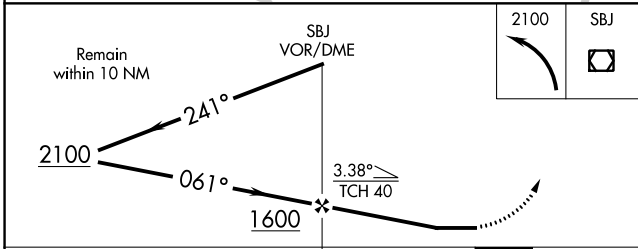
ASOS 120.6	NEWARK APP CON 132.8 379.9	UNICOM 123.0 (CTAF)	118.325
----------------------	--------------------------------------	-------------------------------	----------------



NE-2, 03 OCT 2024 to 31 OCT 2024

NE-2, 03 OCT 2024 to 31 OCT 2024

ELEV 106	TDZE 106
----------	----------



CATEGORY	A	B	C	D
S-8	700-1	594 (600-1)		NA
CIRCLING	700-1 594 (600-1)	960-1¼ 854 (900-1¼)		NA

REIL Rwys 12 and 30	MIRL Rwy 12-30
FAF to MAP 4.1 NM	
Knots	60 90 120 150 180
Min:Sec	4:06 2:44 2:03 1:38 1:22