

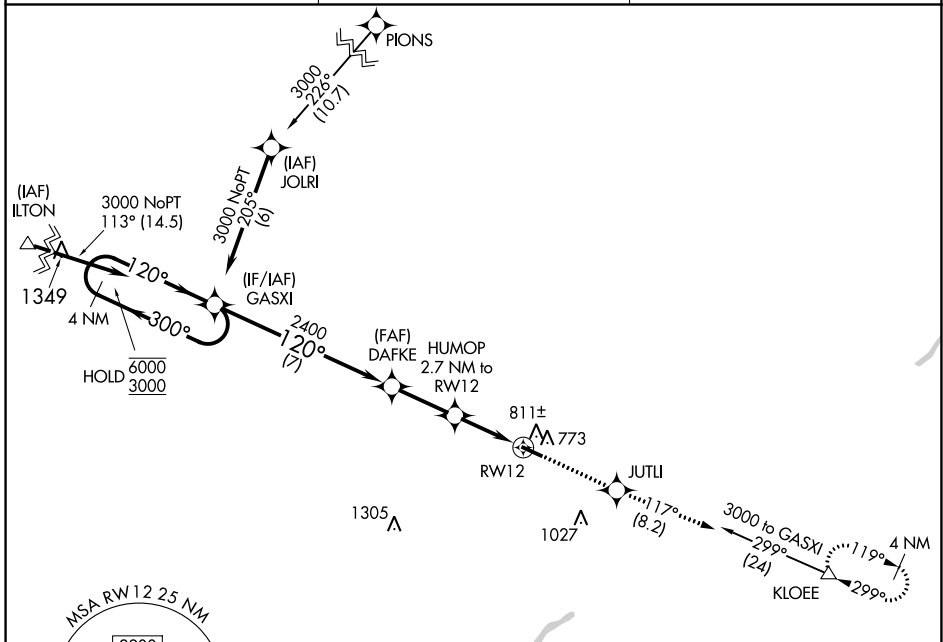
APP CRS	Rwy Idg	4199
120°	TDZE	707
	Apt Elev	707

RNAV (GPS) RWY 12

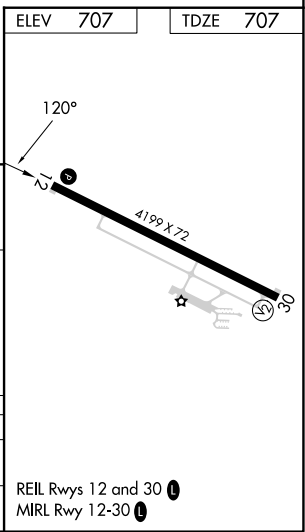
DEFIANCE MEML (DFI)

RNP APCH.	MISSED APPROACH: Climb to 3000 direct JUTLI and on track 117° to KLOEE and hold.
<p>▼ Circling Rwy 30 NA at night. Rwy 12 helicopter visibility reduction below 3/4 SM NA.</p> <p>▲</p>	

ASOS 121.425	TOLEDO APP CON 134.35 307.0	UNICOM 122.7 (CTAF)
------------------------	---------------------------------------	-------------------------------



VGSIs and descent angles not coincident (VGSIs Angle 3.00/TCH 26). 4 NM Holding Pattern GASXI				
6000 ← 300° 3000 → 120°		2400 → 120° → 1600 → 120° → 1140-1 3.00 ≥ TCH 40		
7 NM		2.5 NM		1.5 NM
CATEGORY	A	B	C	D
RNAV MDA	1100-1	393 (400-1)	1100-1 1/8	393 (400-1 1/8)
CIRCLING	1140-1 433 (500-1)	1160-1 453 (500-1)	1380-2 673 (700-2)	1380-2 1/4 673 (700-2 1/4)



EC-2, 03 OCT 2024 to 31 OCT 2024

EC-2, 03 OCT 2024 to 31 OCT 2024