

APP CRS	Rwy Idg	<b>4279</b>
<b>220°</b>	TDZE	<b>189</b>
	Apt Elev	<b>189</b>

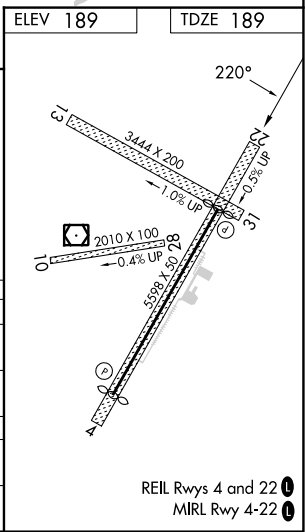
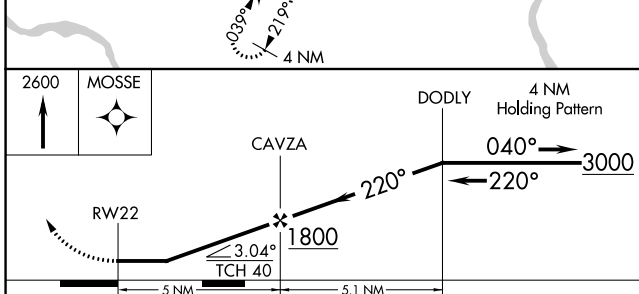
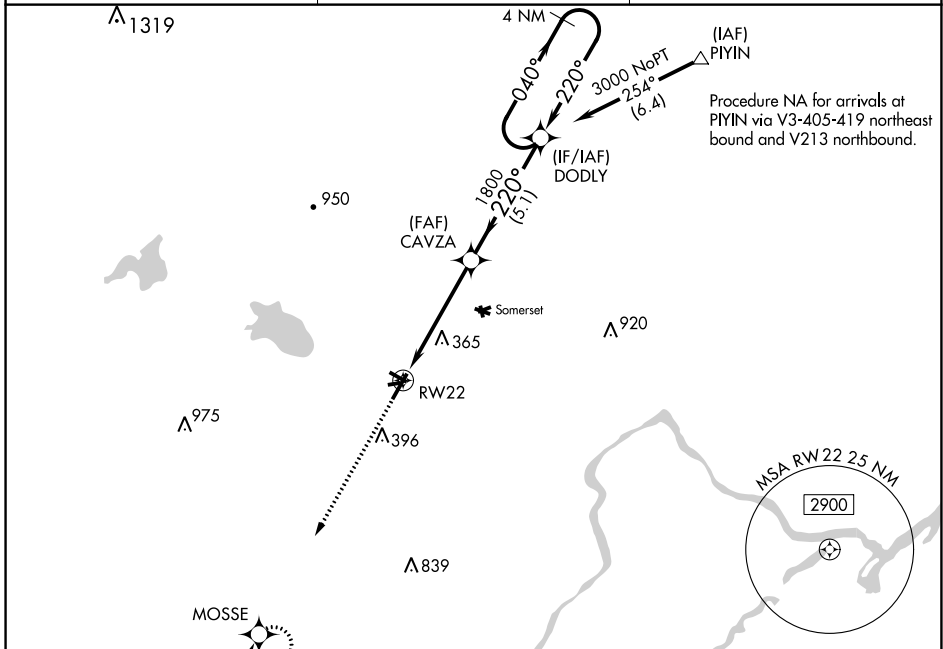
# RNAV (GPS) RWY 22

SOLBERG/HUNTERDON (N51)

**▽** DME/DME RNP-0.3 NA. Circling NA to Rwys 10-28 and 13-31. Rwy 22 helicopter visibility reduction below 3/4 SM NA. Obtain local altimeter setting on CTAF; when not received use Newark Liberty Intl altimeter setting.

**▲** NA MISSED APPROACH: Climb to 2600 direct MOSSE and hold.

NEWARK APP CON <b>132.8 379.9</b>	GCO <b>121.725</b>	UNICOM <b>122.8</b> (CTAF)
--------------------------------------	-----------------------	-------------------------------



CATEGORY	A	B	C	D
LNVA MDA	620-1	431 (500-1)		NA
CIRCLING	680-1 491 (500-1)	760-1 571 (600-1)		NA
NEWARK LIBERTY INTL ALTIMETER SETTING MINIMUMS				
LNVA MDA	700-1	511 (600-1)		NA
CIRCLING	780-1 591 (600-1)	860-1 671 (700-1)		NA

NE-2, 03 OCT 2024 to 31 OCT 2024

NE-2, 03 OCT 2024 to 31 OCT 2024