

LEMOORE, CALIFORNIA

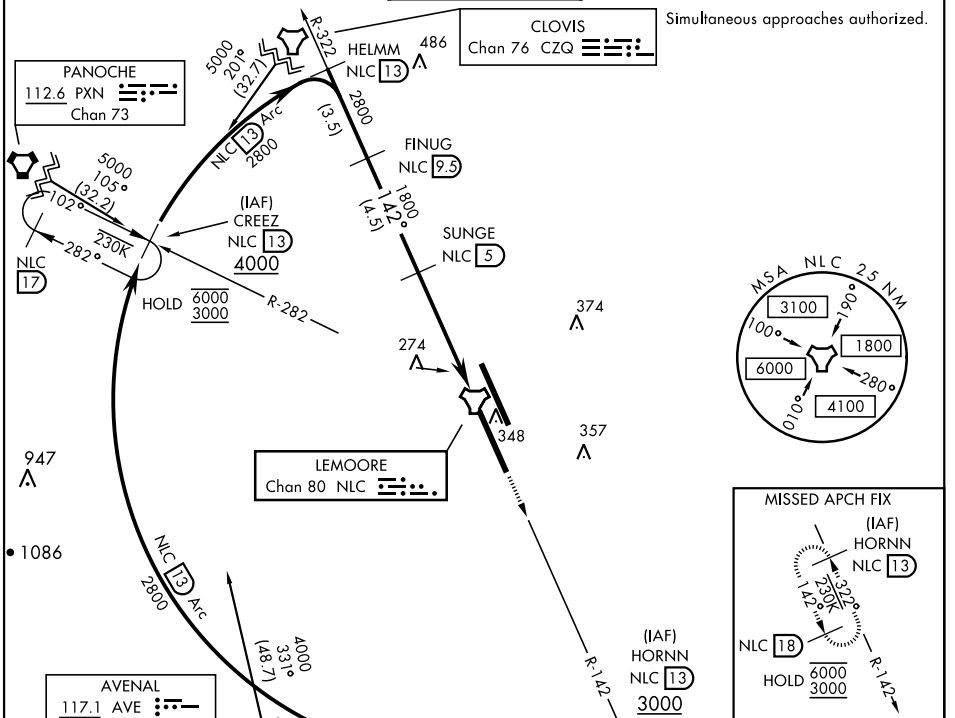
TACAN Y RWY 14R

TACAN Chan 80	NLC	APCH CRS 142°	Rwy Idg 13,501 TDZE 228 Arprt Elev 228
-------------------------	-----	-------------------------	---

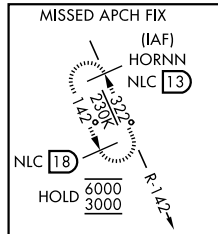
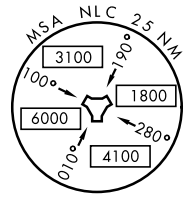
AL-5067 [USN]

LEMOORE NAS (REEVES FIELD) (KNLC)

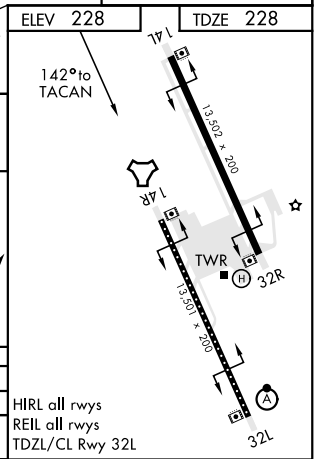
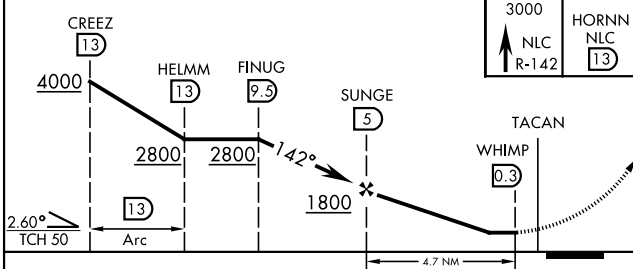
MISSED APPROACH: Climb to 3000 via R-142 to HORNN and hold.						
ATIS★ 121.575 327.15	APP CON 124.1 269.025 (N) 118.15 269.025 (S)		TOWER★ 128.3 360.2	GND CON 121.65 305.2	CLNC DEL 124.1 371.9	ASR/PAR



Simultaneous approaches authorized.



ELEV 228	TDZE 228
----------	----------



CATEGORY	A	B	C	D
S-14R	560-1	332	(400-1)	
CIRCLING	680-1 452 (500-1)		700-1½ 472 (500-1½)	780-2 552 (600-2)

HIRL all rwys
REIL all rwys
TDZL/CL Rwy 32L

LEMOORE, CALIFORNIA 36°20'N-119°57'W LEMOORE NAS (REEVES FIELD) (KNLC)

Amdt 6 19MAY22

TACAN Y RWY 14R

SW-2, 03 OCT 2024 to 31 OCT 2024

SW-2, 03 OCT 2024 to 31 OCT 2024