

LEMOORE, CALIFORNIA

# TACAN Y RWY 14L

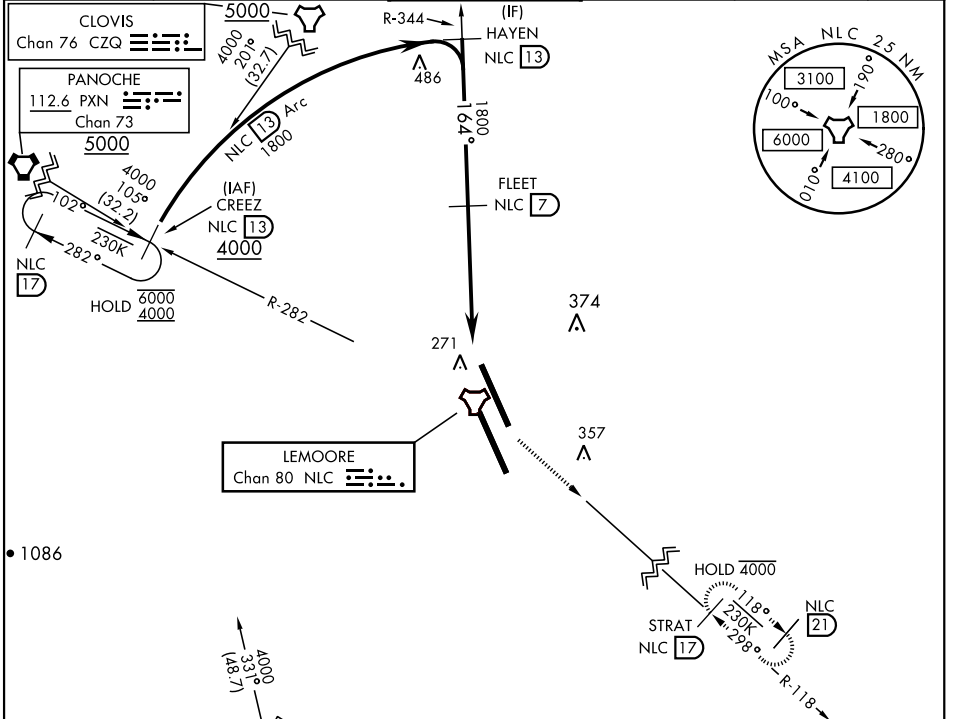
TACAN NLC Chan 80	APCH CRS 164°	Rwy Idg 13,502	TDZE 219
		Arprt Elev 228	

AL-5067 [USN]

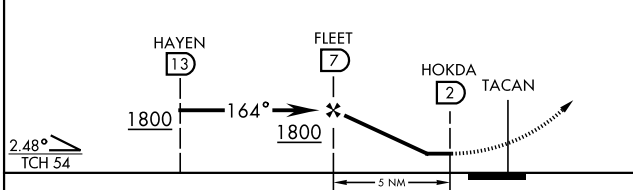
LEMOORE NAS (REEVES FIELD) (KNLC)

**MISSED APPROACH:** Climb to 700 then climbing left turn to 2000 via heading 142°, intercept NLC TACAN R-118 to STRAT and hold.

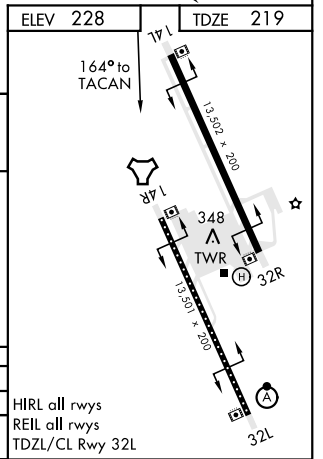
ATIS ★ 121.575 327.15	APP CON 124.1 269.025 (N) 118.15 269.025 (S)	TOWER ★ 128.3 340.2	GND CON 121.65 305.2	CLNC DEL 124.1 371.9	ASR/PAR
--------------------------	--	------------------------	-------------------------	-------------------------	---------



EMERG SAFE ALT 100 NM 16,500



CATEGORY	A	B	C	D
S-14L	560-1	341	(400-1)	
☉ CIRCLING	680-1 452 (500-1)		700-1½ 472 (500-1½)	780-2 552 (600-2)



HIRL all rwys  
REIL all rwys  
TDZL/CL Rwy 32L

LEMOORE, CALIFORNIA  
Amdt 6 19MAY22

36°20'N-119°57'W

LEMOORE NAS (REEVES FIELD) (KNLC)

# TACAN Y RWY 14L

SW-2, 03 OCT 2024 to 31 OCT 2024

SW-2, 03 OCT 2024 to 31 OCT 2024