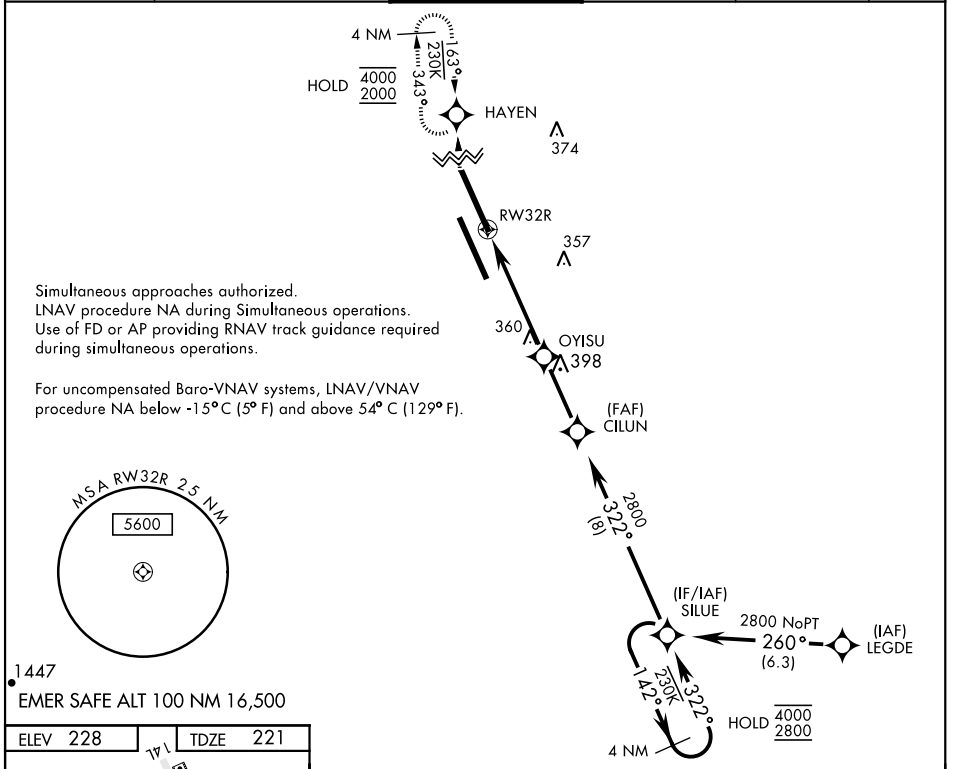


RNAV (GPS) RWY 32R

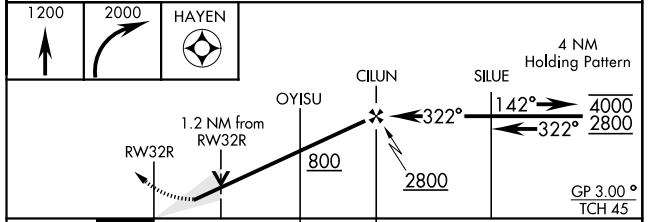
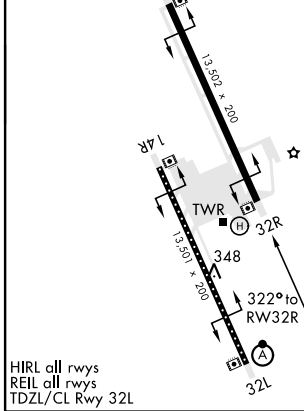
WAAS Chan 60335 W32B	APCH CRS 322°	Rwy Idg 13,502 TDZE 221 Arpt Elev 228	AL-5067 [USN]	LEMOORE NAS (REEVES FIELD) (KNLC)
--	-------------------------	--	---------------	-----------------------------------

DME/DME RNP-0.3 NA	MISSED APPROACH: Climb to 1200, then climbing right turn to 2000 direct HAYEN and hold.
--------------------	---

ATIS ★ 121.575 327.15	APP CON 124.1 269.025 (N) 118.15 269.025 (S)	TOWER ★ 128.3 360.2	GND CON 121.65 305.2	CLNC DEL 124.1 371.9	ASR/PAR
---------------------------------	--	-------------------------------	--------------------------------	--------------------------------	---------



ELEV 228	TDZE 221
----------	----------



CATEGORY	A	B	C	D
LPV DA	421-3/4		200	(200-3/4)
LNAV/VNAV DA	511-7/8 290 (300-7/8)	522-7/8 301 (300-7/8)	532-7/8 309 (400-7/8)	541-7/8 320 (400-7/8)
LNAV MDA	660-1 439	(500-1)	660-1 439	(500-1 1/4)
CIRCLING	680-1 452	(500-1)	700-1 1/2 472 (500-1 1/2)	780-2 552 (600-2)

RNAV (GPS) RWY 32R

SW-2, 31 OCT 2024 to 28 NOV 2024

SW-2, 31 OCT 2024 to 28 NOV 2024