

# RNAV (GPS) RWY 14R

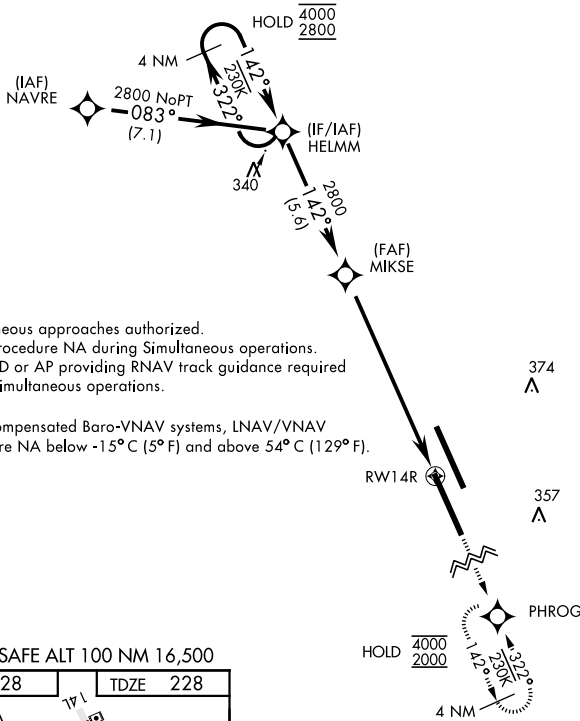
WAAS Chan <b>80286</b> <b>W14B</b>	APCH CRS <b>142°</b>	Rwy Idg <b>13,501</b> TDZE <b>228</b> Arpt Elev <b>228</b>
------------------------------------------	-------------------------	------------------------------------------------------------------

AL-5067 [USN]

LEMOORE NAS (REEVES FIELD) (KNLC)

<b>▽</b> DME/DME RNP-0.3 NA	MISSED APPROACH: Climb to 1200, then climbing right turn to 2000 direct PHROG and hold.
-----------------------------	-----------------------------------------------------------------------------------------

ATIS ★ <b>121.575 327.15</b>	APP CON <b>124.1 269.025 (N)</b> <b>118.15 269.025 (S)</b>	TOWER ★ <b>128.3 360.2</b>	GND CON <b>121.65 305.2</b>	CLNC DEL <b>124.1 371.9</b>	ASR/PAR
---------------------------------	------------------------------------------------------------------	-------------------------------	--------------------------------	--------------------------------	---------

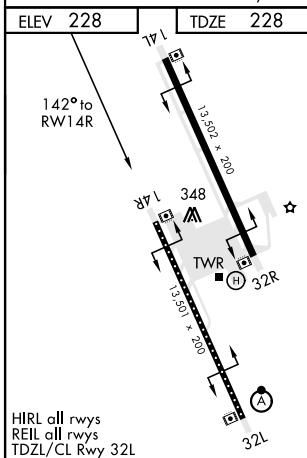


Simultaneous approaches authorized.  
LNAV procedure NA during Simultaneous operations.  
Use of FD or AP providing RNAV track guidance required during simultaneous operations.

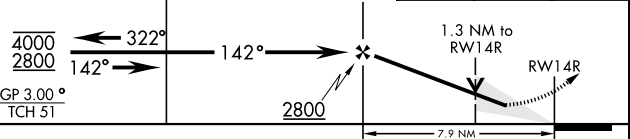
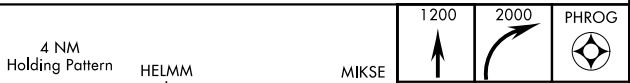
For uncompensated Baro-VNAV systems, LNAV/VNAV procedure NA below -15°C (5°F) and above 54°C (129°F).

1660

EMERG SAFE ALT 100 NM 16,500



HIRL all rws  
REIL all rws  
TDZL/CL Rwy 32L



CATEGORY	A	B	C	D
LPV DA		428-3/4	200 (200-3/4)	
LNAV/VNAV DA		483-3/4	255 (300-3/4)	
LNAV MDA	680-1	452 (500-1)	680-1 3/8 452 (500-1 3/8)	
<b>C</b> CIRCLING	680-1	452 (500-1)	700-1 1/2 472 (500-1 1/2)	780-2 552 (600-2)

# RNAV (GPS) RWY 14R

SW-2, 03 OCT 2024 to 31 OCT 2024

SW-2, 03 OCT 2024 to 31 OCT 2024