

# LEMOORE-ONE DEPARTURE (NLC1 • NLC)

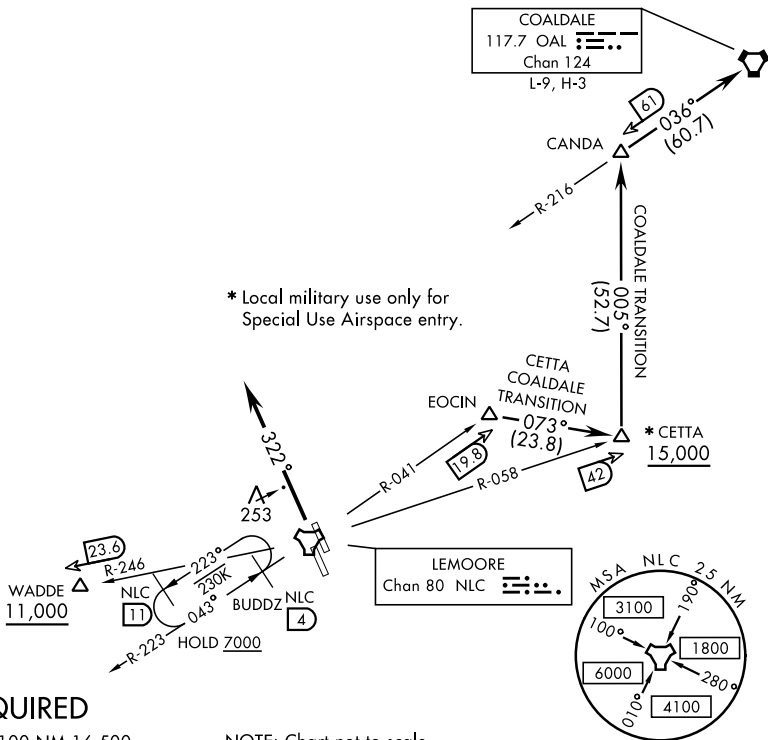
LEMOORE NAS (REEVES FIELD) (KNLC)

AL-5067 [USN] LEMOORE, CALIFORNIA

ATIS ★ 121.575 327.15  
 CLNC DEL  
 124.1 371.9  
 GND CON  
 121.65 305.2  
 LEMOORE TOWER ★  
 128.3 340.2  
 (Rwy 14L, 32L)  
 128.3 360.2  
 (Rwy 14R, 32R)  
 LEMOORE DEP CON  
 124.1 318.8 (N)  
 118.15 318.8 (S)

Rwy	Knots	60	120	180	240	300	360
† 32L/R	V/V(fpm)	318	636	954	1272	1590	1908
†† 32L/R	V/V(fpm)	397	794	1191	1588	1985	2382

† ATC climb rate, CETTA transition to 15,000  
 †† ATC climb rate, WADDE transition to 11,000



## RADAR REQUIRED

EMERG SAFE ALT 100 NM 16,500

NOTE: Chart not to scale

**DEPARTURE ROUTE DESCRIPTION**

**TAKE-OFF RUNWAYS 32L/32R:** Climb to 2000 via heading 322° then radar vectors to join assigned transition or route.

**CETTA TRANSITION (NLC1-CETTA):** From over EOCIN direct CETTA thence as filed. Cross CETTA at or above 15,000.

**COALDALE TRANSITION (NLC1-OAL):** From over EOCIN direct CETTA, direct CANDA, direct COALDALE VORTAC. Cross CETTA at or above 15,000.

**WADDE TRANSITION (NLC1-WADDE):** From over WADDE thence as filed. Cross WADDE at or above 11,000.

**LOST COMMUNICATIONS:** If no transmissions are received within 8 DME of NLC TACAN, fly departure heading to intercept NLC 10 DME arc, arc to respective departure radial then via departure radial to assigned departure fix. Then via assigned route. Once established on departure radial climb to filed altitude.

# LEMOORE-ONE DEPARTURE (NLC1 • NLC)

LEMOORE, CALIFORNIA

LEMOORE NAS (REEVES FIELD) (KNLC)