

|  |                        |                             |   |
|--|------------------------|-----------------------------|---|
| WAAS<br>CH <b>60909</b><br><b>W29A</b> | APP CRS<br><b>291°</b> | Rwy Idg<br>TDZE<br>Apt Elev | <b>6525</b><br><b>871</b><br><b>871</b> |
|--|------------------------|-----------------------------|---|

# RNAV (GPS) RWY 29

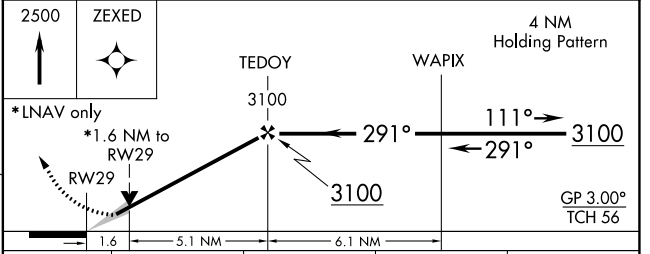
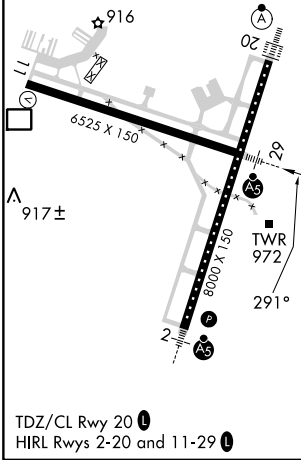
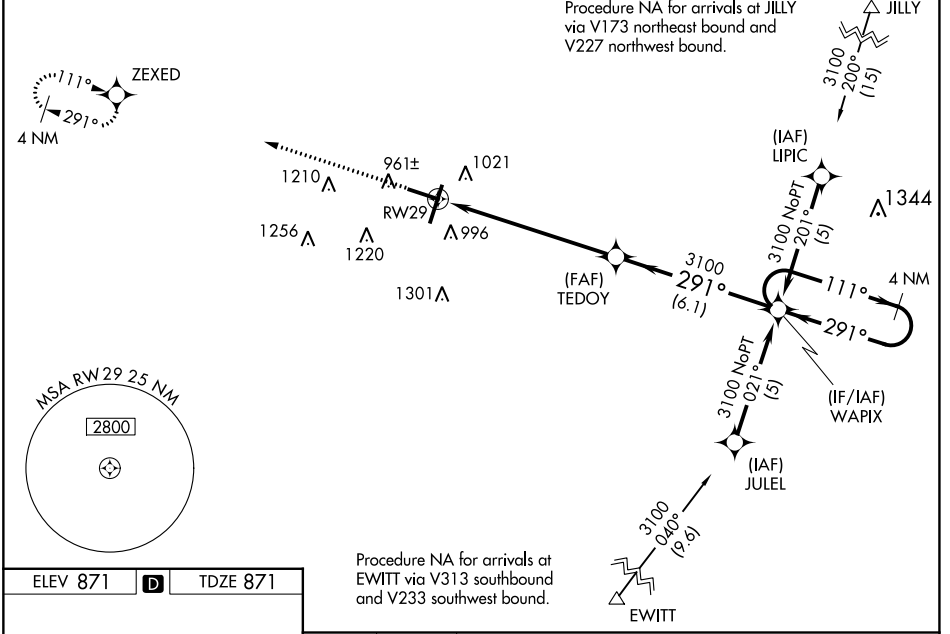
CENTRAL IL RGNL/BLOOMINGTON-NORMAL (BMI)

**▼** For uncompensated Baro-VNAV systems, LNAV/VNAV NA below -16°C (4°F) or above 54°C (130°F). DME/DME RNP-0.3 NA. Baro-VNAV and VDP NA when using General Downing-Peoria Intl altimeter setting. When local altimeter setting not received, use General Downing-Peoria Intl altimeter setting: increase all DA 116 feet and all MDA 120 feet; increase LPV all Cats visibility to RVR 3500, LNAV/VNAV all Cats and LNAV Cats C/D visibility 3/4 mile, and Circling Cats C/D visibility 1/4 mile. For inoperative MALSRs when using General Downing-Peoria Intl Regional altimeter setting increase LPV all Cats visibility 1/2 mile, and LNAV Cat C/D visibility 3/4 mile.

**MALSR**

**MISSED APPROACH:**  
Climb to 2500 direct ZEXED and hold.

|                        |   |  |                          |                         |
|------------------------|---|--|--------------------------|-------------------------|
| ATIS<br><b>119.575</b> | SAINT LOUIS APP CON<br><b>128.725 256.9</b> | BLOOMINGTON TOWER *<br><b>124.6 (CTAF) 269.575</b> | GND CON<br><b>121.65</b> | UNICOM<br><b>122.95</b> |
|------------------------|---|--|--------------------------|-------------------------|



| CATEGORY          | A       | B             | C                             | D                             |
|-------------------|---------|---------------|-------------------------------|-------------------------------|
| LPV DA            |         | 1121/24       | 250 (300-1/2)                 |                               |
| LNAV/VNAV DA      |         | 1304/50       | 433 (500-1)                   |                               |
| LNAV MDA          | 1460/24 | 589 (600-1/2) | 1460-1 1/4                    | 589 (600-1 1/4)               |
| <b>C</b> CIRCLING | 1460-1  | 589 (600-1)   | 1620-2 1/4<br>749 (800-2 1/4) | 1620-2 1/2<br>749 (800-2 1/2) |

# RNAV (GPS) RWY 29

EC-3, 31 OCT 2024 to 28 NOV 2024

EC-3, 31 OCT 2024 to 28 NOV 2024