


WAAS CH 99303 W20A	APP CRS 201°	Rwy Idg TDZE Apt Elev	8000 871 871
--	------------------------	-----------------------------	---

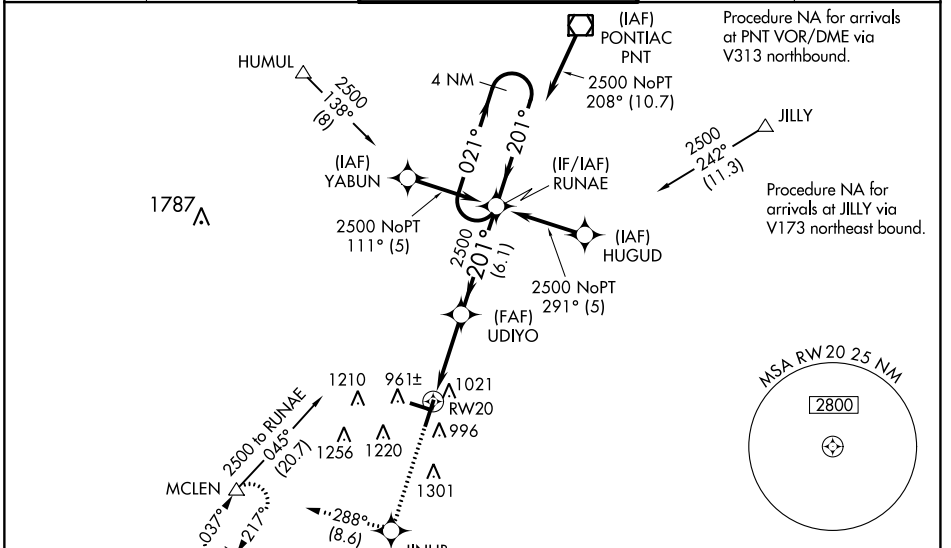
RNAV (GPS) RWY 20

CENTRAL IL RGNL/BLOOMINGTON-NORMAL (BMI)

⚠ For uncompensated Baro-VNAV systems, LNAV/VNAV NA below -16°C (4°F) or above 54°C (130°F). DME/DME RNP-0.3 NA. Baro-VNAV and VDP NA when using General Downing-Peoria Intl altimeter setting. When local altimeter setting not received, use General Downing-Peoria Intl altimeter setting: increase all DA 116 feet and all MDA 120 feet; increase LPV all Cats visibility to ¾ mile, LNAV/VNAV all Cats visibility to 1 ¾ mile, LNAV Cats C/D visibility to 1 mile, and Circling Cats C/D visibility ¾ mile. For inop ALSF increase LNAV Cat C/D visibility to RVR 6000. For inoperative ALSF-2 when using General Downing-Peoria Intl altimeter setting increase LPV all Cats visibility to RVR 6000.

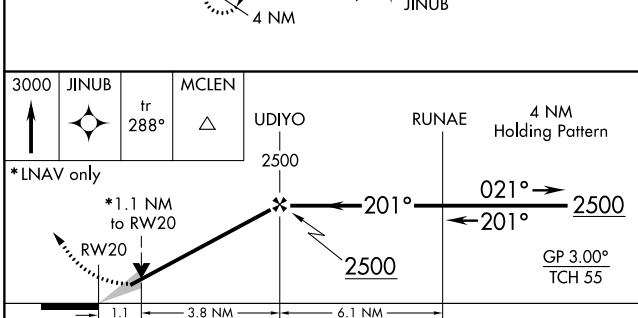
ALSF-2

 MISSED APPROACH:
 Climb to 3000 direct JINUB and on track 288° to MCLEN and hold.

ATIS 119,575	SAINT LOUIS APP CON 128,725 256.9	BLOOMINGTON TOWER ★ 124.6(CTAF) 269,575	GND CON 121.65	UNICOM 122.95
------------------------	---	---	--------------------------	-------------------------

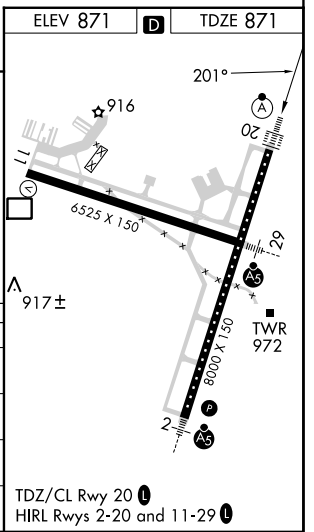


EC-3, 03 OCT 2024 to 31 OCT 2024

EC-3, 03 OCT 2024 to 31 OCT 2024



CATEGORY	A	B	C	D
LPV DA		1121/24	250 (300-½)	
LNAV/VNAV DA		1301/50	430 (500-1)	
LNAV MDA	1280/24	409 (500-½)	1280/40	409 (500-¾)
C CIRCLING	1340-1	469 (500-1)	1620-2¼ 749 (800-2¼)	1620-2½ 749 (800-2½)



RNAV (GPS) RWY 20