

WAAS CH <b>97617</b> <b>W11A</b>	APP CRS <b>111°</b>	Rwy Idg TDZE Apt Elev	<b>6525</b> <b>871</b> <b>871</b>
--	------------------------	-----------------------------	---

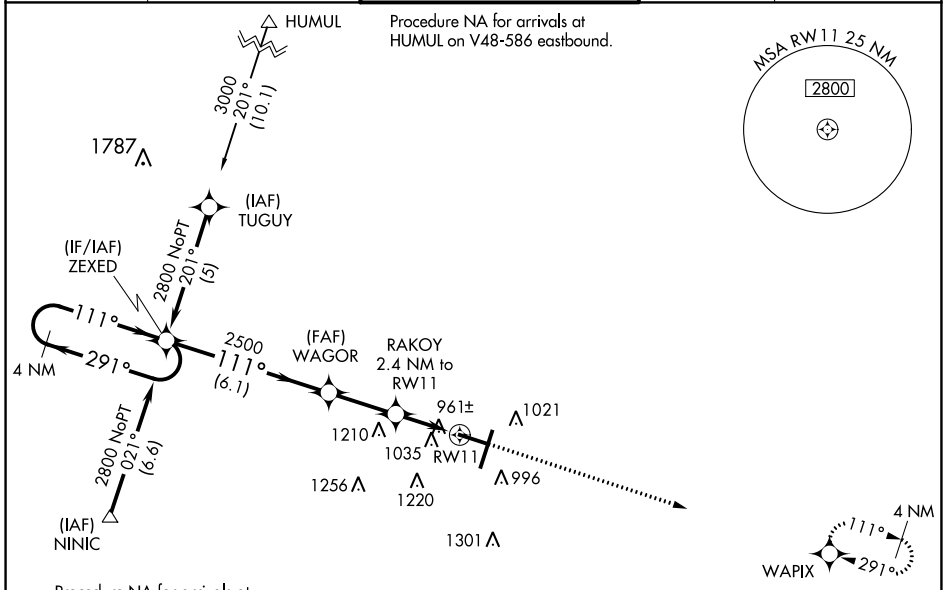
# RNAV (GPS) RWY 11

CENTRAL IL RGNL/BLOOMINGTON-NORMAL (BMI)

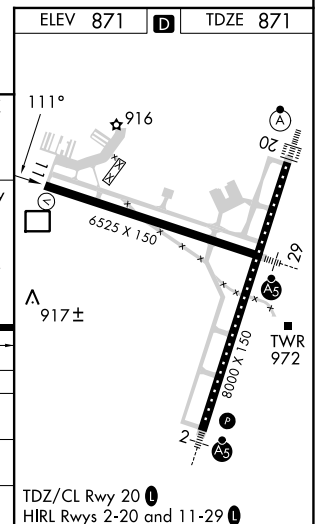
**⚠** For uncompensated Baro-VNAV systems, LNAV/VNAV NA below -1.6°C (4°F) or above 54°C (130°F). DME/DME RNP-0.3 NA. Baro-VNAV and VDP NA when using General Downing-Peoria Intl altimeter setting. When local altimeter setting not received, use General Downing-Peoria Intl setting: increase all DA 116 feet and all MDA 120 feet; increase LPV all Cats visibility ½ mile, LNAV/VNAV all Cats and LNAV Cat C/D visibility ⅓ mile, and Circling Cats C/D visibility ½ mile.

**MISSED APPROACH:**  
Climb to 3100 direct WAPIX and hold.

ATIS <b>119.575</b>	SAINT LOUIS APP CON <b>128.725 256.9</b>	<b>BLOOMINGTON TOWER *</b> <b>124.6 (CTAF) 269.575</b>	GND CON <b>121.65</b>	UNICOM <b>122.95</b>
------------------------	---	---	--------------------------	-------------------------



4 NM Holding Pattern ZEXED		3100 WAPIX	
2800	← 291°	→ 111°	
GP 3.00° TCH 43		2500	
6.1 NM		2.5 NM	1.2 NM
WAGOR		RAKOY	
		2.4 NM to RW11	
		*1.2 NM to RW11	
		*1680	
CATEGORY	A	B	C
LPV DA		1121-3/4	250 (300-3/4)
LNAV/VNAV DA		1341-1 5/8	470 (500-1 5/8)
LNAV MDA	1280-1	409 (500-1)	1280-1 1/4 409 (500-1 1/4)
<b>C</b> CIRCLING	1340-1	469 (500-1)	1620-2 1/4 749 (800-2 1/4) 1620-2 1/2 749 (800-2 1/2)



EC-3, 03 OCT 2024 to 31 OCT 2024

EC-3, 03 OCT 2024 to 31 OCT 2024