

WAAS CH 45640 W29A	APP CRS 289°	Rwy Idg TDZE Apt Elev	7001 4683 4716
--	------------------------	-----------------------------	---

RNAV (GPS) RWY 29

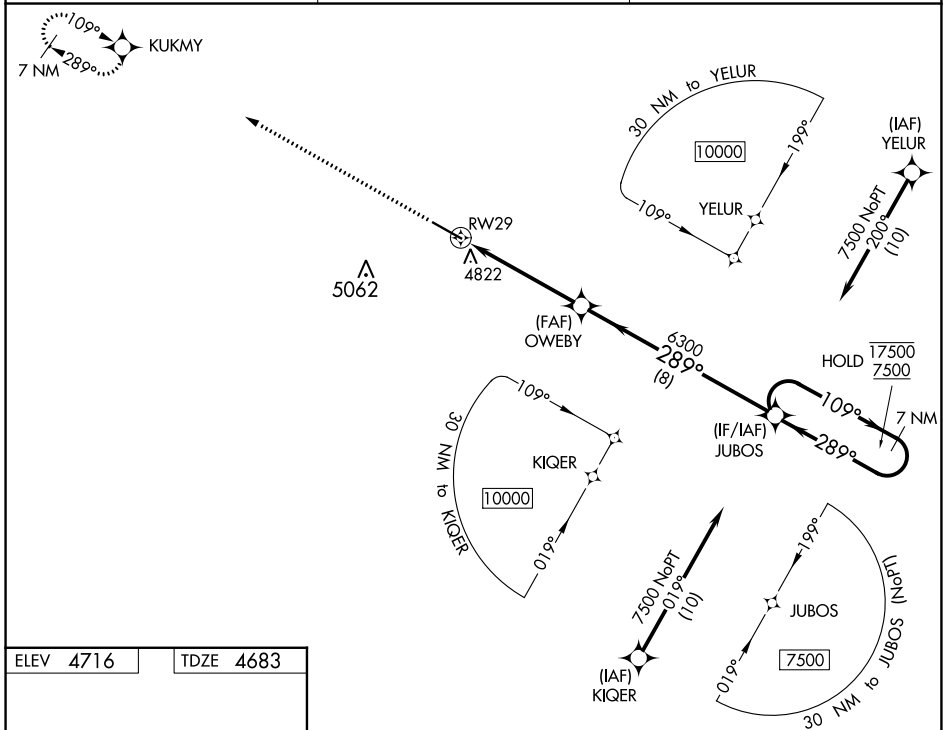
COLORADO PLAINS RGNL (AKO)

RNP APCH.

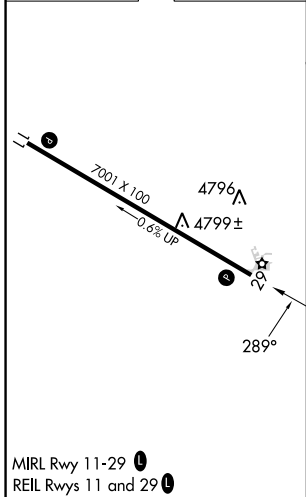
▼ For uncompensated Baro-VNAV systems, LNAV/VNAV
▲ NA below -22°C or above 54°C.

MISSED APPROACH: Climb to 7500 to KUKMY and hold.

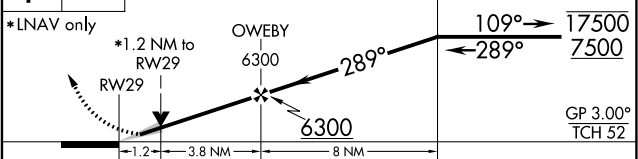
ASOS 135.475	DENVER CENTER 133.95 317.55	UNICOM 122.8 (CTAF)
------------------------	---------------------------------------	-------------------------------



ELEV 4716	TDZE 4683
------------------	------------------



7500 KUKMY VGSi and RNAV glidepath not coincident (VGSi Angle 3.00/TCH 43). 7 NM Holding Pattern



CATEGORY	A	B	C	D
LPV DA		4933-1	250 (300-1)	
LNAV/VNAV DA		4987-1	304 (300-1)	
LNAV MDA	5080-1	397 (400-1)	5080-1½	397 (400-1½)
CIRCLING	5140-1 424 (500-1)	5260-1 544 (600-1)	5420-2 704 (800-2)	5420-2¼ 704 (800-2¼)

AKRON, COLORADO
Amdt 1A 15AUG19

40°11'N-103°13'W

COLORADO PLAINS RGNL (AKO)

RNAV (GPS) RWY 29

SW-1, 05 SEP 2024 to 03 OCT 2024

SW-1, 05 SEP 2024 to 03 OCT 2024