

WAAS CH <b>90415</b> <b>W09A</b>	APP CRS <b>095°</b>	Rwy Idg TDZE <b>981</b> Apt Elev <b>981</b>
--	------------------------	---

# RNAV (GPS) RWY 9R

OAKLAND COUNTY INTL (PTK)

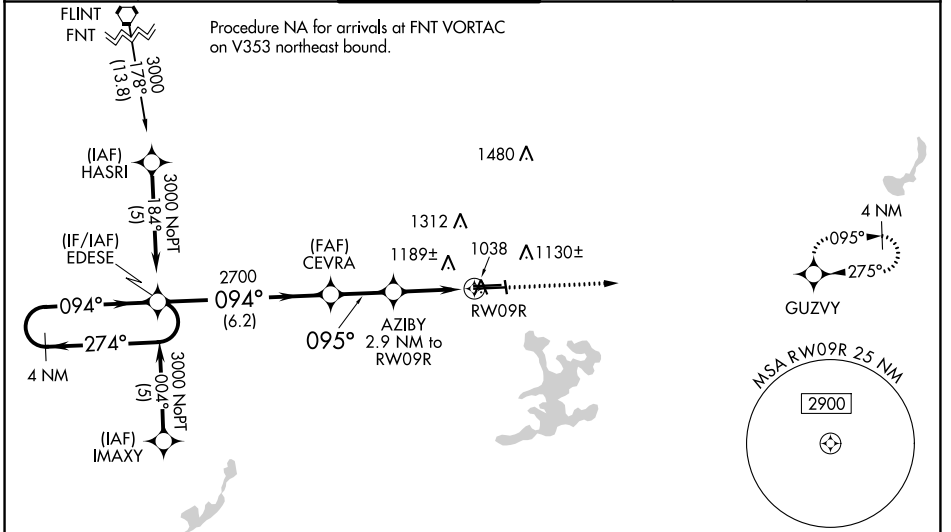
RNP APCH:

▼ For uncompensated Baro-VNAV systems, LNAV/VNAV NA below -16°C (4°F) or above 47°C (111°F). Baro-VNAV and VDP NA when using Coleman A Young altimeter setting. Circling Rwy 9L, 36 NA at night. When local altimeter setting not received, use Coleman A Young Muni altimeter setting and increase LPV DA to 1286 feet, LNAV/VNAV DA to 1685 feet and all MDA 120 feet, increase LNAV/VNAV all Cats visibility to 2 SM, increase LNAV Cat C visibility to RVR 5000, Cat D visibility to RVR 6000, and Circling Cat C/D visibility ½ SM. For inop MALSRL increase LNAV Cats A/B visibility to RVR 5000. For inop MALSRL when using Coleman A Young Muni altimeter setting; increase LPV all Cats, and LNAV Cats A/B visibility to RVR 5000. # RVR 1800 authorized with use of FD or AP or HUD to DA, NA when using Coleman A Young Muni altimeter setting.

**MALSRL**

**MISSED APPROACH:**  
Climb to 3000 direct GUVZY and hold.

ATIS <b>125.025</b>	DETROIT APP CON <b>132.35 284.0</b>	PONTIAC TOWER * <b>120.5 (CTAF) 0</b>	GND CON <b>121.9</b>	CLNC DEL <b>118.25</b>	UNICOM <b>122.95</b>
------------------------	--	--	-------------------------	---------------------------	-------------------------

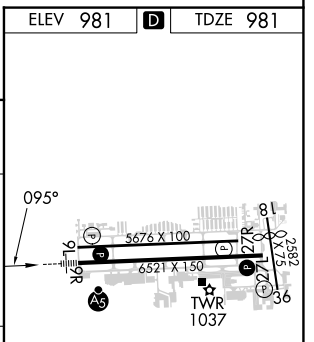
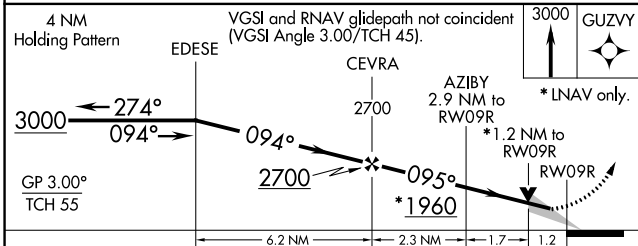


EC-1, 08 AUG 2024 to 05 SEP 2024

EC-1, 08 AUG 2024 to 05 SEP 2024

ELEV 981	<b>D</b>	TDZE 981
----------	----------	----------

1750 A



CATEGORY	A	B	C	D
LPV DA		1181/24	200 (200-½)	
LNAV/VNAV DA		1580-1½	599 (600-1½)	
LNAV MDA	1420/40	439 (500-¾)		1420/50 (439 (500-1))
CIRCLING	1500-1 (519 (600-1))	1540-1 (559 (600-1))	1640-1¾ (659 (700-1¾))	1640-2 (659 (700-2))

HIRL Rwy 9R-27L **0**

MIRL Rwy 9L-27R

REIL Rwy 27L **0**

REIL Rws 9L and 27R