

| | | |
|-------------|----------|-------------|
| APP CRS | Rwy Idg | 3635 |
| 301° | TDZE | 1108 |
| | Apt Elev | 1110 |

RNAV (GPS) RWY 30

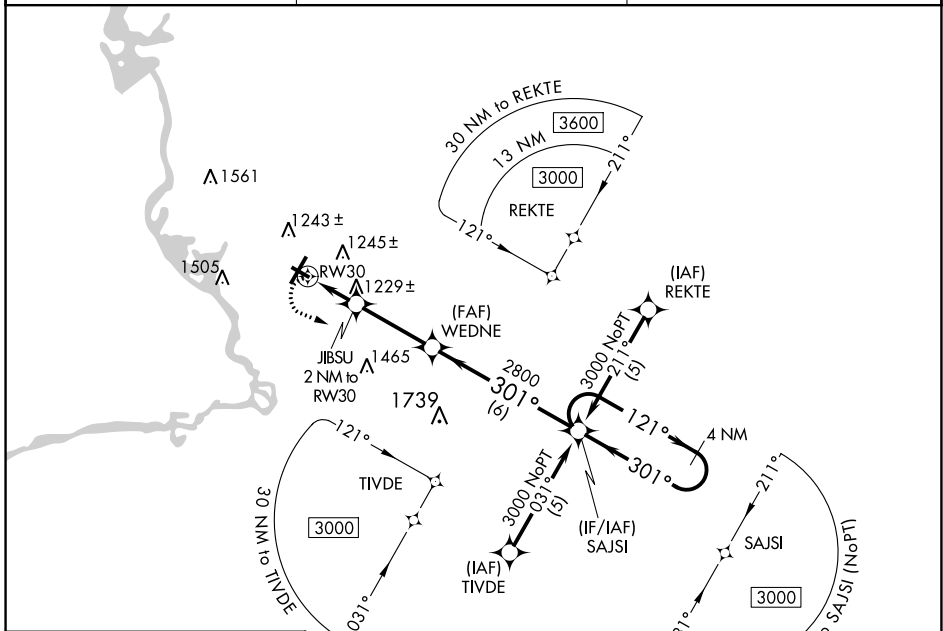
STEVENS POINT MUNI (STE)

RNP APCH - GPS.

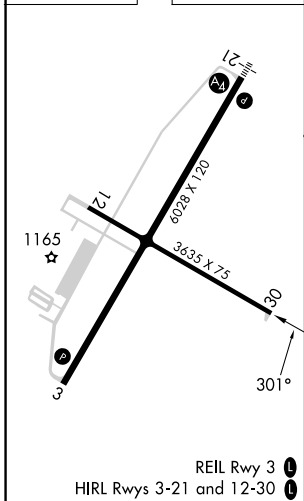
▼ Rwy 30 helicopter visibility reduction below 3/4 SM NA. When local altimeter setting not received, use Mosinee altimeter setting and increase all MDA 60 feet, increase LNAV Cat C and D visibility 1/4 SM. VDP NA when using Mosinee altimeter setting.

MISSED APPROACH:
Climbing left turn to 3000 direct SAJSI and hold.

| | | |
|--------------------------|--|-------------------------------|
| AWOS-3 119.275 | MINNEAPOLIS CENTER 124.4 317.7 | UNICOM 122.7 (CTAF) |
|--------------------------|--|-------------------------------|



| | |
|-----------|-----------|
| ELEV 1110 | TDZE 1108 |
|-----------|-----------|



| | | | | |
|-----------------|-----------------------|-----------------------|-------------------------------|-------------------------------|
| | 3000 SAJSI | 4 NM Holding Pattern | | |
| | JIBSU 2 NM to RW30 | WEDNE | SAJSI | 3000 |
| | 1.2 NM to RW30 | 2800 | 121° → | ← 301° |
| | 1780 | 3.1 NM | 6 NM | |
| CATEGORY | A | B | C | D |
| LNAV MDA | 1520-1 | 412 (500-1) | 1520-1 1/8 | 412 (500-1 1/8) |
| CIRCLING | 1580-1 470 (500-1) | 1600-1 490 (500-1) | 1860-2 1/4 750 (800-2 1/4) | 1860-2 1/2 750 (800-2 1/2) |

EC-3, 08 AUG 2024 to 05 SEP 2024

EC-3, 08 AUG 2024 to 05 SEP 2024