

WAAS CH 77910 W03A	APP CRS 031°	Rwy Idg TDZE Apt Elev	6028 1108 1110
--	------------------------	-----------------------------	---

RNAV (GPS) RWY 3

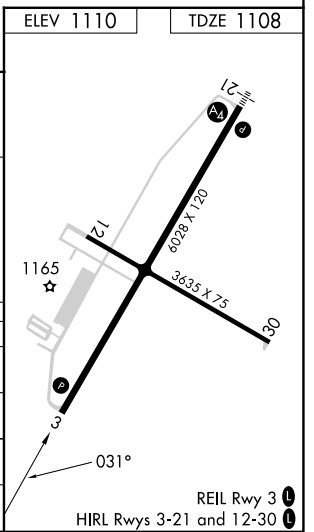
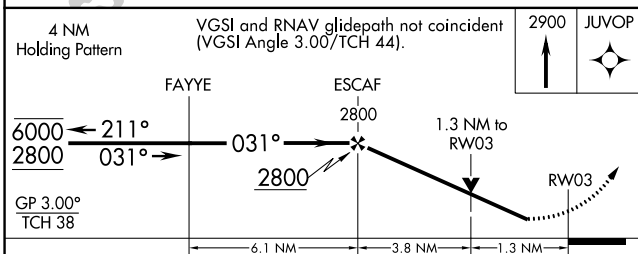
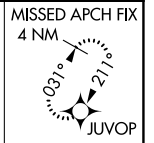
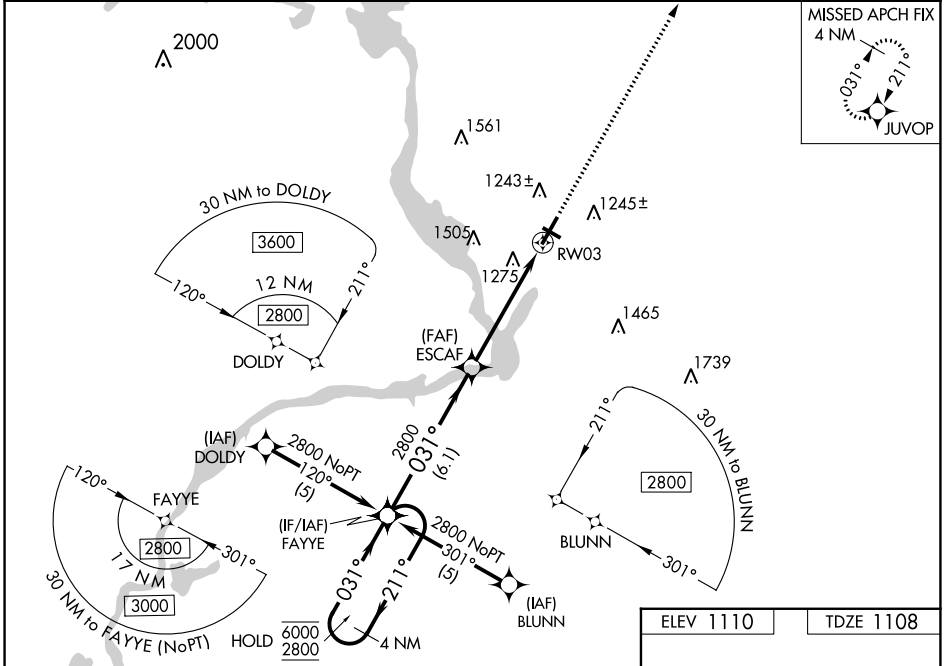
STEVENS POINT MUNI (STE)

RNP APCH - GPS.

▽ Rwy 3 helicopter visibility reduction below 3/4 SM NA.
⚠ For uncompensated Baro-VNAV systems, LNAV/VNAV NA below -17° C or above 54°C.

MISSED APPROACH:
Climb to 2900 direct JUVOP and hold.

AWOS-3 119.275	MINNEAPOLIS CENTER 124.4 317.7	UNICOM 122.7 (CTAF) 0
--------------------------	--	--



CATEGORY	A	B	C	D
LPV DA	1409-7/8		301 (300-7/8)	
LNAV/VNAV DA	1594-13/8		486 (500-13/8)	
LNAV MDA	1540-1	432 (500-1)	1540-1 1/4	432 (500-1 1/4)
C CIRCLING	1580-1 470 (500-1)	1600-1 490 (500-1)	1860-2 1/4 750 (800-2 1/4)	1860-2 1/2 750 (800-2 1/2)

EC-3, 08 AUG 2024 to 05 SEP 2024

EC-3, 08 AUG 2024 to 05 SEP 2024

REIL Rwy 3 **0**
HIRL Rwy 3-21 and 12-30 **0**