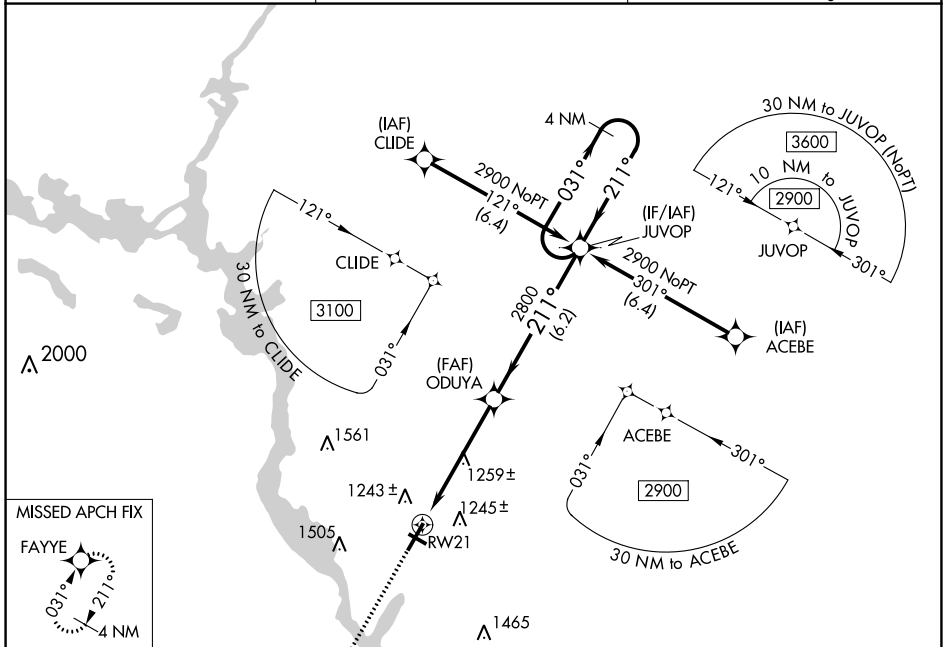


WAAS CH 86511 W21A	APP CRS 211°	Rwy Idg TDZE Apt Elev	6028 1110 1110
--	------------------------	-----------------------------	---

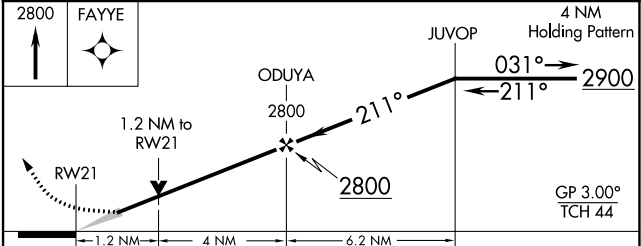
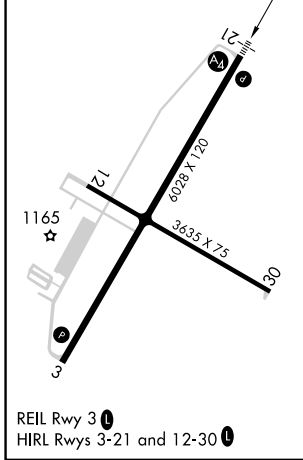
RNAV (GPS) RWY 21

STEVENS POINT MUNI (STP)

RNP APCH - GPS.	MALS	MISSED APPROACH: Climb to 2800 direct FAYYE and hold.
AWOS-3 119.275	MINNEAPOLIS CENTER 124.4 317.7	UNICOM 122.7 (CTAF)



ELEV 1110	TDZE 1110
-----------	-----------



CATEGORY	A	B	C	D
LPV DA		1360- ³ / ₄	250 (300- ³ / ₄)	
LNAV/VNAV DA		1457- ³ / ₄	347 (400- ³ / ₄)	
LNAV MDA	1520- ³ / ₄	410 (500- ³ / ₄)	1520-1	410 (500-1)
C CIRCLING	1580-1 470 (500-1)	1600-1 490 (500-1)	1860-2 ¹ / ₄ 750 (800-2 ¹ / ₄)	1860-2 ¹ / ₂ 750 (800-2 ¹ / ₂)

EC-3, 03 OCT 2024 to 31 OCT 2024

EC-3, 03 OCT 2024 to 31 OCT 2024