

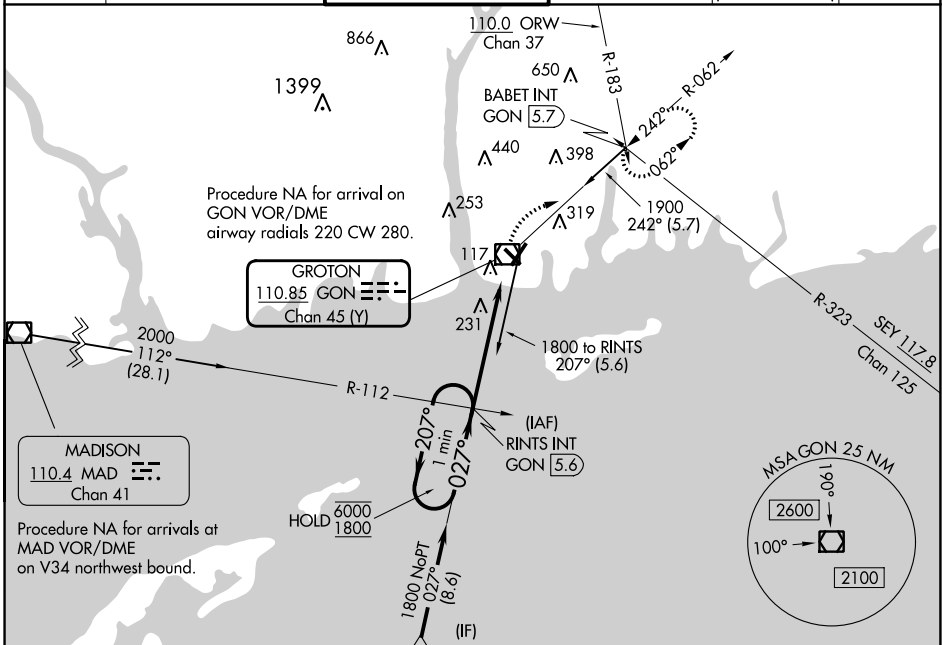
VOR/DME GON <b>110.85</b> Chan 45 (Y)	APP CRS <b>027°</b>	Rwy Idg <b>5000</b> TDZE <b>8</b> Apt Elev <b>9</b>
---	------------------------	---

# VOR RWY 5

GROTON-NEW LONDON (GON)

<p><b>⚠</b> Circling Rwy 15 NA at night. <b>⚠</b> For inop ALS, increase S-5 Cat C/D visibility to 1 3/4.</p>	<p><b>MALS R</b> AS</p>	<p><b>MISSED APPROACH:</b> Climbing right turn to 2100 on GON R-062 to BABET INT/GON 5.7 DME and hold, continue climb-in-hold to 2100.</p>
---	-----------------------------	--

<p>ATIS <b>127.0</b></p>	<p>PROVIDENCE APP CON ★ <b>125.75 319.2</b></p>	<p>GROTON TOWER ★ <b>125.6 (CTAF) 0 236.775</b></p>	<p>GND CON <b>121.65 236.775</b></p>	<p>CLNC DEL <b>119.85</b> (when twr closed)</p>	<p>CLNC DEL <b>121.65</b></p>
------------------------------	---	---	--	---	-----------------------------------



NE-1, 31 OCT 2024 to 28 NOV 2024

NE-1, 31 OCT 2024 to 28 NOV 2024

