

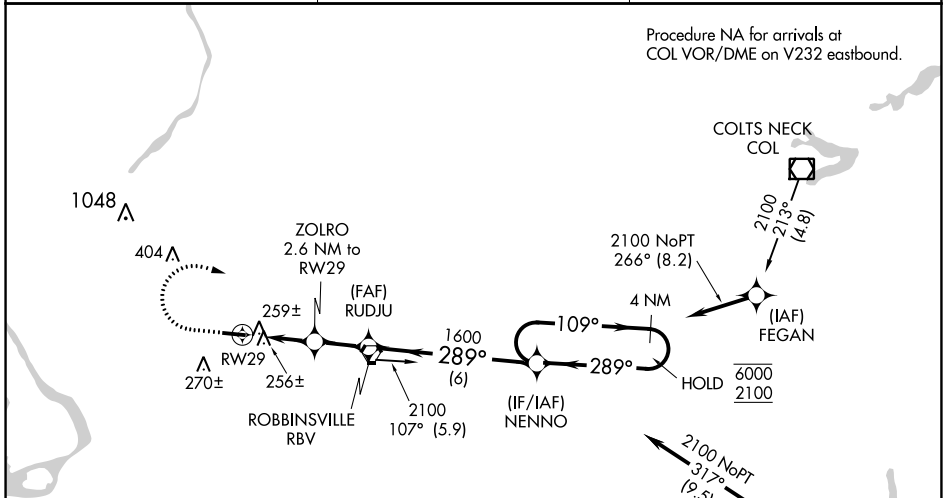
APP CRS 289°	Rwy ldg TDZE Apt Elev	3975 118 118
------------------------	-----------------------------	---

RNAV (GPS) RWY 29

TRENTON-ROBBINSVILLE (N87)

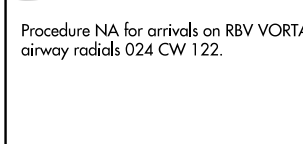
RNP APCH.	MISSED APPROACH: Climb to 1000, then climbing right turn to 2100 direct NENNO and hold.
<p>Procedure NA at night. Rwy 29 helicopter visibility reduction below 1 SM NA. Use Wrightstown altimeter setting.</p>	

MC GUIRE APP CON 126.475 363.8	UNICOM 123.0 (CTAF)	123.3 0
--	-------------------------------	----------------

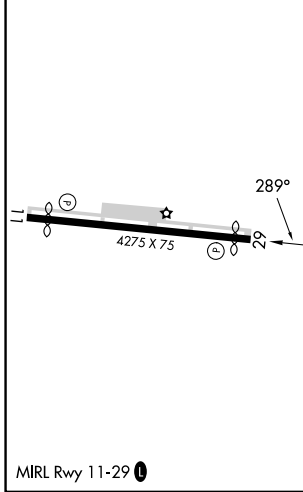


NE-2, 03 OCT 2024 to 31 OCT 2024

NE-2, 03 OCT 2024 to 31 OCT 2024



ELEV 118	TDZE 118
----------	----------



1000	2100	NENNO	Visual Segment - Obstacles.	4 NM Holding Pattern
RWY 29		ZOLRO 2.6 NM to RWY 29	RUDJU	NENNO
980		1600	289°	109° → 6000
← 289°				← 289° 2100
2.6 NM		1.9 NM	6 NM	
CATEGORY	A	B	C	D
LNAV MDA	540-1	422 (500-1)	540-1½	422 (500-1½)
CIRCLING	680-1	562 (600-1)	680-1½	760-2
			562 (600-1½)	642 (700-2)