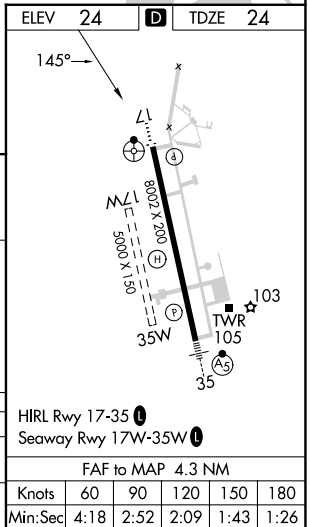
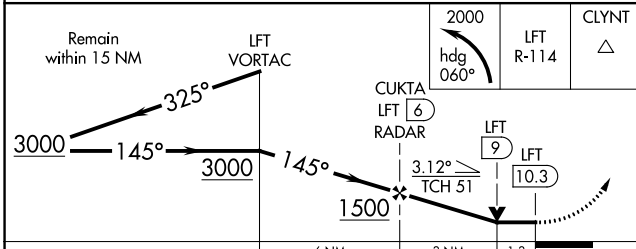
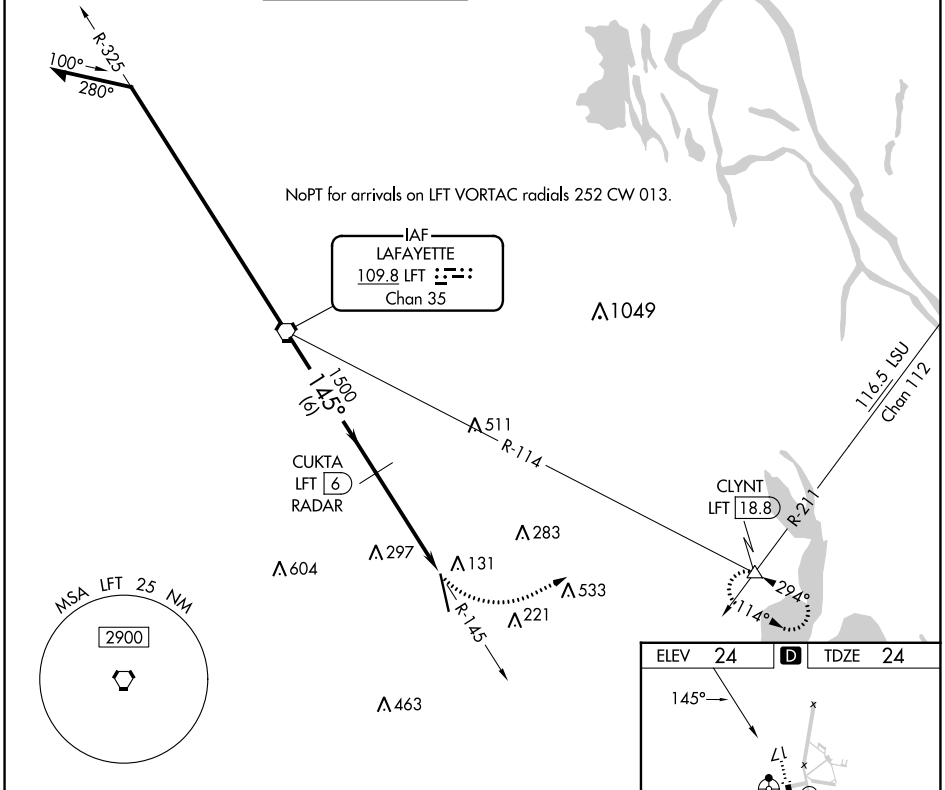


VORTAC LFT <b>109.8</b> Chan 35	APP CRS <b>145°</b>	Rwy Idg TDZE <b>24</b> Apt Elev <b>24</b>	<b>8002</b>
---------------------------------------	------------------------	-------------------------------------------------	-------------

# VOR or TACAN RWY 17

ACADIANA RGNL (A.R.A.)

<p><b>▼</b> Circling NA to Rwy 17W and 35W. <b>▲</b> DME or RADAR required. For inop ALS, increase S-17 Cat E visibility to 1 3/8 mile.</p>		<p>ODALS </p>	<p>MISSED APPROACH: Climbing left turn to 2000 on heading 060° and LFT VORTAC R-114 to CLYNT INT/18.8 DME and hold.</p>				
ASOS <b>133.325</b>	LAFAYETTE APP CON* <b>121.1 268.7</b>	ACADIANA TOWER* <b>125.0 (CTAF) 239.3</b>	GND CON <b>121.7</b>	CLNC DEL <b>121.7</b>	CLNC DEL <b>118.05</b> (when twr closed)	UNICOM <b>122.95</b>	<b>122.7</b>



CATEGORY	A	B	C	D	E
S-17	500-3/4	476 (500-3/4)	500-1 1/4	476 (500-1 1/4)	
<b>C</b> CIRCLING	500-1	476 (500-1)	600-1 1/2 576 (600-1 1/2)	680-2 656 (700-2)	900-3 876 (900-3)

FAF to MAP 4.3 NM					
Knots	60	90	120	150	180
Min:Sec	4:18	2:52	2:09	1:43	1:26

SC-4, 31 OCT 2024 to 28 NOV 2024

SC-4, 31 OCT 2024 to 28 NOV 2024