


WAAS CH 82004 W05A	APP CRS 050°	Rwy ldg 10960 TDZE 93 Apt Elev 93
--	------------------------	--

RNAV (GPS) RWY 5

KINSTON RGNL JETPORT AT STALLINGS FLD (ISO)

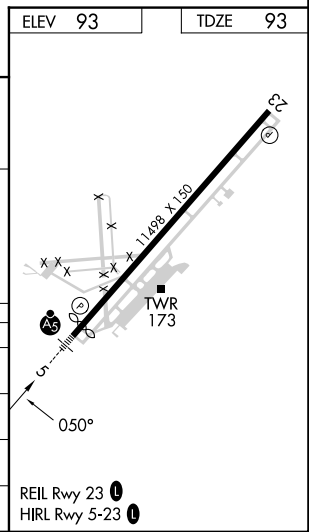
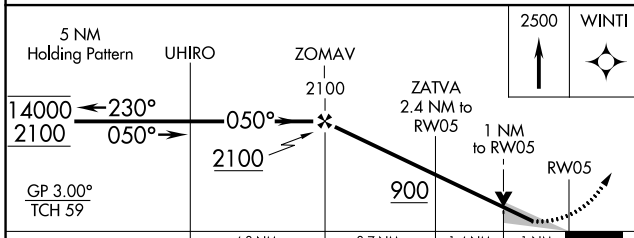
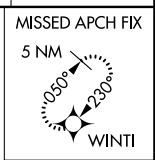
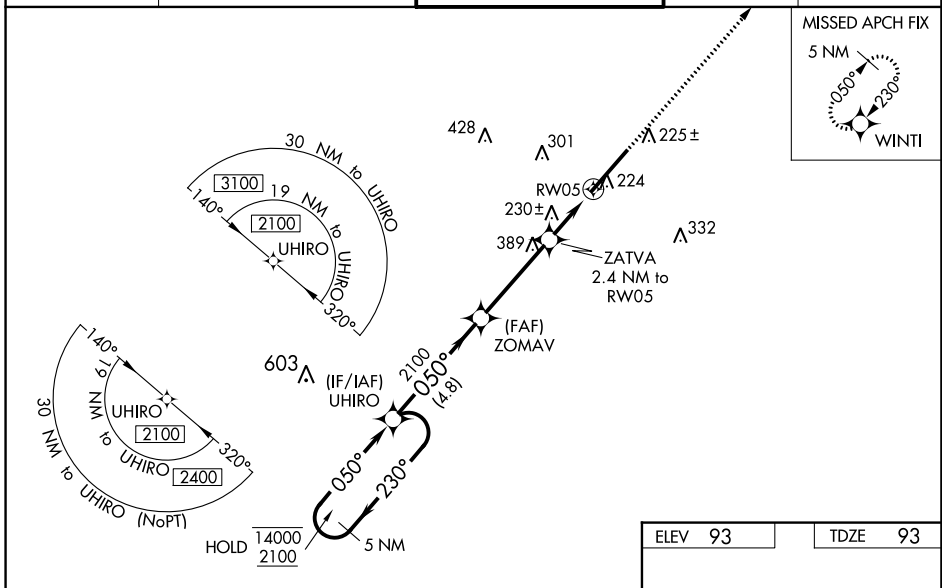
RNP APCH - GPS.

⚠ For uncompensated Baro-VNAV systems, LNAV/VNAV NA below -15°C or above 54°C. Baro-VNAV and VDP NA when using Seymour Johnson AFB altimeter setting. When local altimeter setting not received, use Seymour Johnson AFB altimeter setting: increase DA to 336 feet; increase LNAV/VNAV DA to 529 feet and all visibilities to RVR 4000; increase all MDAs 60 feet and LNAV visibility Cat C/D to RVR 4500 and Circling visibility Cat D ¼ SM. For inop MALS, increase LNAV/VNAV all Cats visibility to RVR 4500 and LNAV Cats A and B visibility to RVR 5500 and Cats C and D to RVR 6000. For inop MALS when using Seymour Johnson AFB altimeter setting, increase LNAV Cats A and B visibility to RVR 5500 and Cats C and D to 1 ½ mile. *RVR 1800 authorized with use of FD or AP or HUD to DA (NA when using Seymour Johnson AFB altimeter setting).

MALS 

MISSED APPROACH: Climb to 2500 direct WINTI and hold.

AWOS-3 132.75	SEYMOUR JOHNSON APP CON * 127.3 273.6	KINSTON TOWER * 120.6 (CTAF) 335.55	GND CON 121.9	UNICOM 122.95
-------------------------	---	---	-------------------------	-------------------------



CATEGORY	A	B	C	D
LPV DA	293/24		200 (200-½)	
LNAV/VNAV DA	486/35		393 (400-⅙)	
LNAV MDA	480/24	387 (400-½)	480/35	387 (400-⅙)
C CIRCLING	580-1	487 (500-1)	700-1¾ 607 (700-1¾)	740-2 647 (700-2)

RNAV (GPS) RWY 5

SE-2, 05 SEP 2024 to 03 OCT 2024

SE-2, 05 SEP 2024 to 03 OCT 2024