

WAAS CH 99413 W18A	APP CRS 179°	Rwy Idg 6508 TDZE 8 Apt Elev 9
----------------------------------------	------------------------	-----------------------------------------------------------

RNAV (GPS) RWY 18

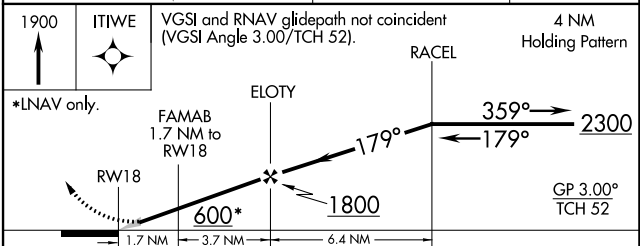
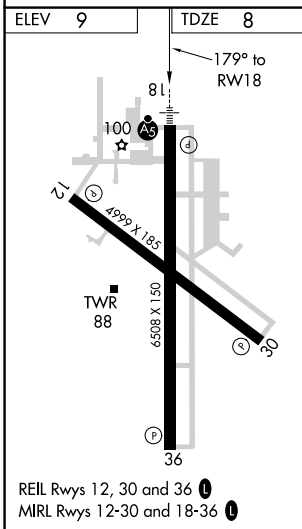
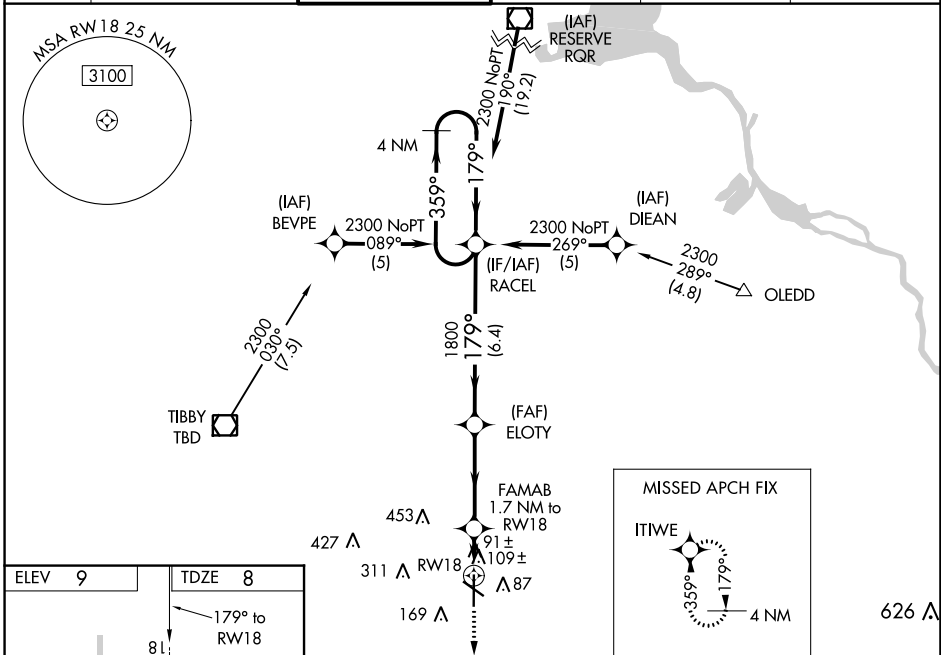
HOUMA-TERREBONNE (HUM)

⚠ Baro-VNAV NA when using Louis Armstrong New Orleans Intl altimeter setting. For uncompensated Baro-VNAV systems, LNAV/VNAV NA below -15°C (5°F) or above 49°C (120°F). DME/DME RNP-0.3 NA. When local altimeter setting not received, use Louis Armstrong New Orleans Intl altimeter setting: increase LPV DA to 285, increase LNAV/VNAV DA to 526 and all visibilities ½ SM; increase all MDAs 80 feet and visibility Cats C and D ¼ SM. For inop ALS when using Louis Armstrong New Orleans Intl altimeter setting increase all LPV visibilities to ¾ SM, increase all LNAV/VNAV visibilities and LNAV Cats C and D visibility to 1 ¾ SM.



MISSED APPROACH:
Climb to 1900 direct ITIWE and hold.

ATIS 120.25	NEW ORLEANS APP CON 118.9 350.35	HOUMA TOWER ★ 125.3 (CTAF) 346.3	GND CON 123.875	CLNC DEL 118.9 (When twr closed)	UNICOM 122.95
-----------------------	--------------------------------------------	--------------------------------------------	---------------------------	-----------------------------------------------	-------------------------



CATEGORY	A	B	C	D
LPV DA		208-½	200 (200-½)	
LNAV/VNAV DA		449-¾	441 (500-¾)	
LNAV MDA	440-½	432 (500-½)	440-¾	432 (500-¾)
C CIRCLING	480-1	471 (500-1)	760-2¼ 751 (800-2¼)	760-2½ 751 (800-2½)

SC-4, 03 OCT 2024 to 31 OCT 2024

SC-4, 03 OCT 2024 to 31 OCT 2024