

WAAS CH 73030 W32A	APP CRS 319°	Rwy ldg TDZE Apt Elev	5650 193 200
--	------------------------	-----------------------------	---

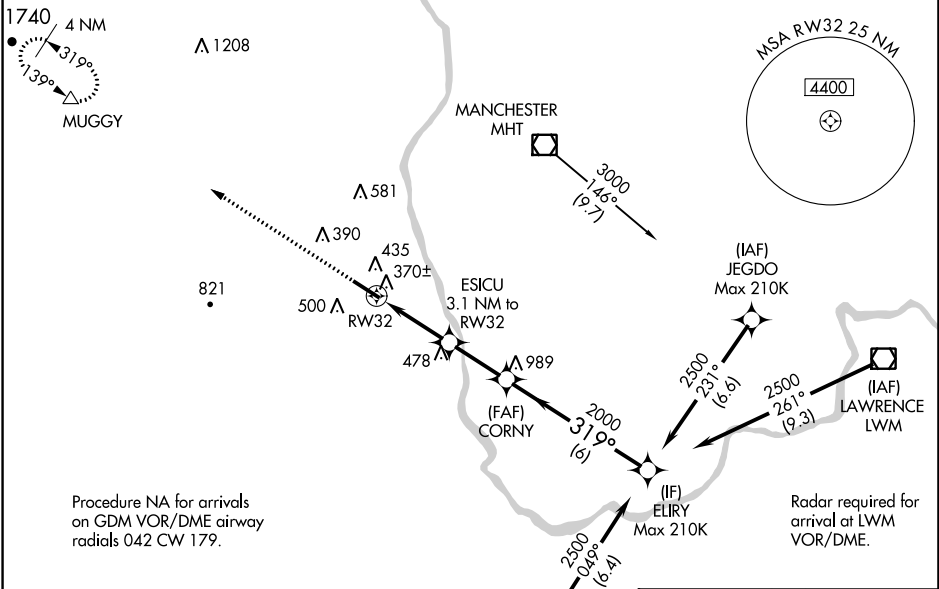
RNAV (GPS) RWY 32

BOIRE FIELD (ASH)

⚠ Baro-VNAV and VDP NA with Manchester altimeter setting. For uncompensated Baro-VNAV systems, LNAV/VNAV NA below -1.5°C (5°F) or above 54°C (130°F). When local altimeter setting not received, use Manchester altimeter setting: increase LPV all Cats DA to 513 feet, LNAV/VNAV all Cats DA to 666 feet and all visibilities 1/8 mile; increase all MDA 40 feet and increase LNAV Cat C/D visibility 1/8 mile and Circling Cat D 1/4 mile. DME/DME RNP-0.3 NA. Helicopter visibility reduction below 3/4 SM NA.

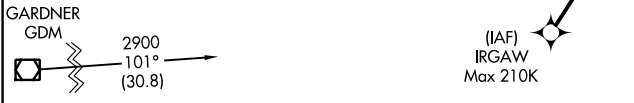
MISSED APPROACH:
Climb to 3800 direct MUGGY INT and hold, continue climb-in-hold to 3800.

ATIS 125.1	BOSTON APP CON 124.9 269,075	NASHUA TOWER ★ 133.2 (CTAF) 0	GND CON 121.8	CLNC DEL 121.8
----------------------	--	--	-------------------------	--------------------------

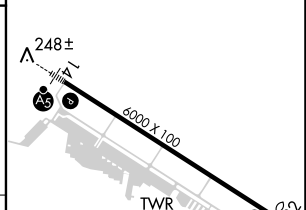
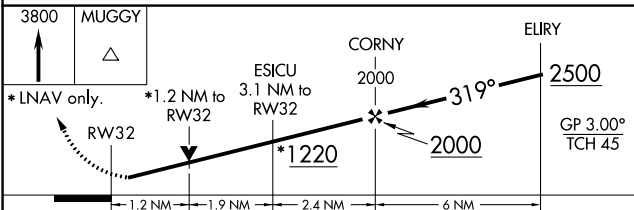


Procedure NA for arrivals on GDM VOR/DME airway radials 042 CW 179.

Radar required for arrival at LWM VOR/DME.



ELEV 200	TDZE 193
----------	----------



CATEGORY	A	B	C	D
LPV DA	481-1 288 (300-1)			
LNAV/VNAV DA	634-1½ 441 (500-1½)			
LNAV MDA	620-1 427 (500-1)	620-1¼ 427 (500-1¼)		
CIRCLING	820-1¾ 620 (700-1)	840-1¾ 640 (700-1)	900-2 700 (700-2)	1000-2½ 800 (800-2½)

HIRL Rwy 14-32 **0**
REIL Rwy 32 **0**

NE-1, 31 DEC 2020 to 28 JAN 2021

NE-1, 31 DEC 2020 to 28 JAN 2021