

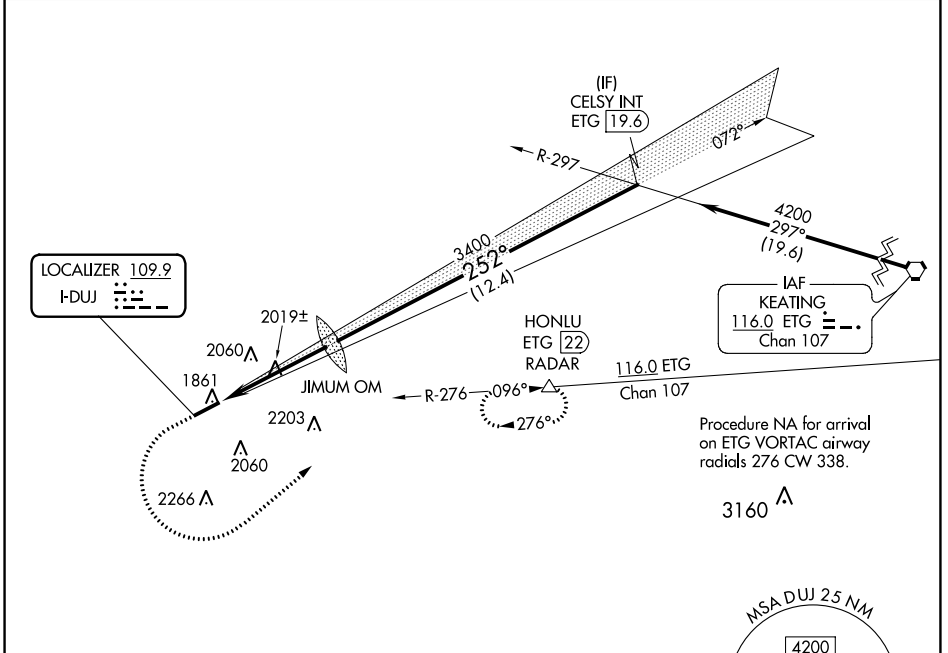
LOC I-DUJ 109.9	APP CRS 252°	Rwy Idg TDZE Apt Elev	5503 1817 1817
---------------------------	------------------------	-----------------------------	---

ILS or LOC RWY 25

DUBOIS RGNL (DUJ)

<p>⚠ Circling NA for Cat D south of Rwy 7-25. For inop ALS, increase S-LOC 25 Cats C/D visibility to 1 3/8 SM.</p>	<p>MALSR</p> 	<p>MISSED APPROACH: Climb to 2900 then climbing left turn to 4200 on heading 060° and ETG VORTAC R-276 to HONLU/ETG 22 DME/RADAR and hold.</p>
---	--	--

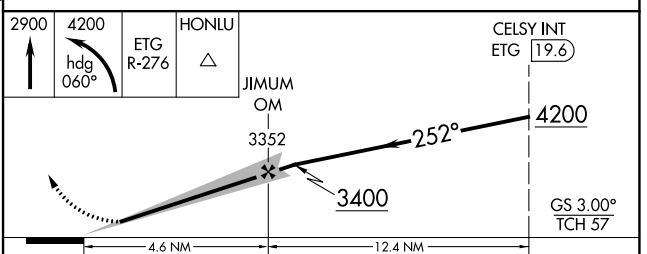
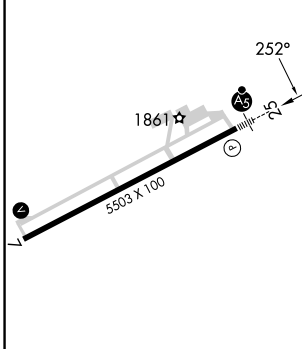
ASOS 119.025	CLEVELAND CENTER 126.725 291.65	UNICOM 123.0 (CTAF) 0
------------------------	---	---------------------------------



NE-4, 31 OCT 2024 to 28 NOV 2024

NE-4, 31 OCT 2024 to 28 NOV 2024

ELEV 1817	D	TDZE 1817
-----------	----------	-----------



CATEGORY	A	B	C	D
S-ILS 25	2017-1/2		200 (200-1/2)	
S-LOC 25	2280-1/2 463 (500-1/2)		2280-1 463 (500-1)	
C CIRCLING	2320-1 503 (600-1)	2360-1 543 (600-1)	2380-1 1/2 563 (600-1 1/2)	2400-2 583 (600-2)

HIRL Rwy 7-25 **0**
REIL Rwy 7 **0**

FAF to MAP 4.6 NM

Knots	60	90	120	150	180
Min:Sec	4:36	3:04	2:18	1:50	1:32