

WAAS CH 42528 W24A	APP CRS 238°	Rwy Idg 5000 TDZE 873 Apt Elev 876
--	------------------------	---

RNAV (GPS) RWY 24

CUYAHOGA COUNTY (CGF)

RNP APCH.

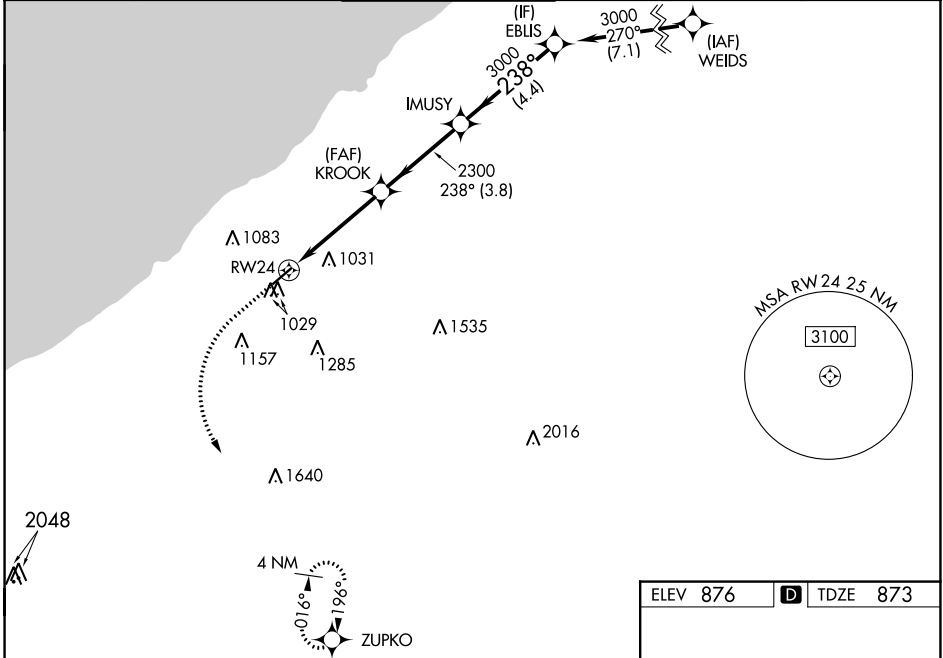
⚠ For uncompensated Baro-VNAV systems, LNAV/VNAV NA below -16°C or above 38°C. For inop ALS increase LNAV/VNAV visibility all Cats to 7/8 SM, LNAV Cat C, D to 1 1/8 SM.

MALSR



MISSED APPROACH:
Climb to 2500 then climbing left turn to 3000 direct ZUPKO and hold.

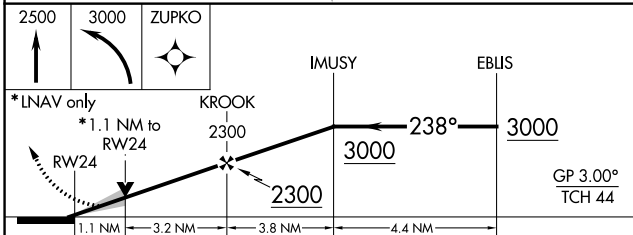
D-ATIS 119.95	CLEVELAND APP CON 125.35 346.325	COUNTY TOWER★ 118.5 (CTAF) ⓪	GND CON 121.85	CLNC DEL 121.85 (when tower closed)
-------------------------	--	---	--------------------------	--



EC-2, 31 OCT 2024 to 28 NOV 2024

EC-2, 31 OCT 2024 to 28 NOV 2024

ELEV 876	D TDZE 873
----------	-------------------



CATEGORY	A	B	C	D
LPV DA		1073-1/2	200 (200-1/2)	
LNAV/VNAV DA		1178-1/2	305 (400-1/2)	
LNAV MDA	1280-1/2	407 (500-1/2)	1280-3/4	407 (500-3/4)
C CIRCLING	1400-1 524 (600-1)	1500-1 624 (700-1)	1560-2 684 (700-1)	1620-2 1/2 744 (800-2 1/2)

