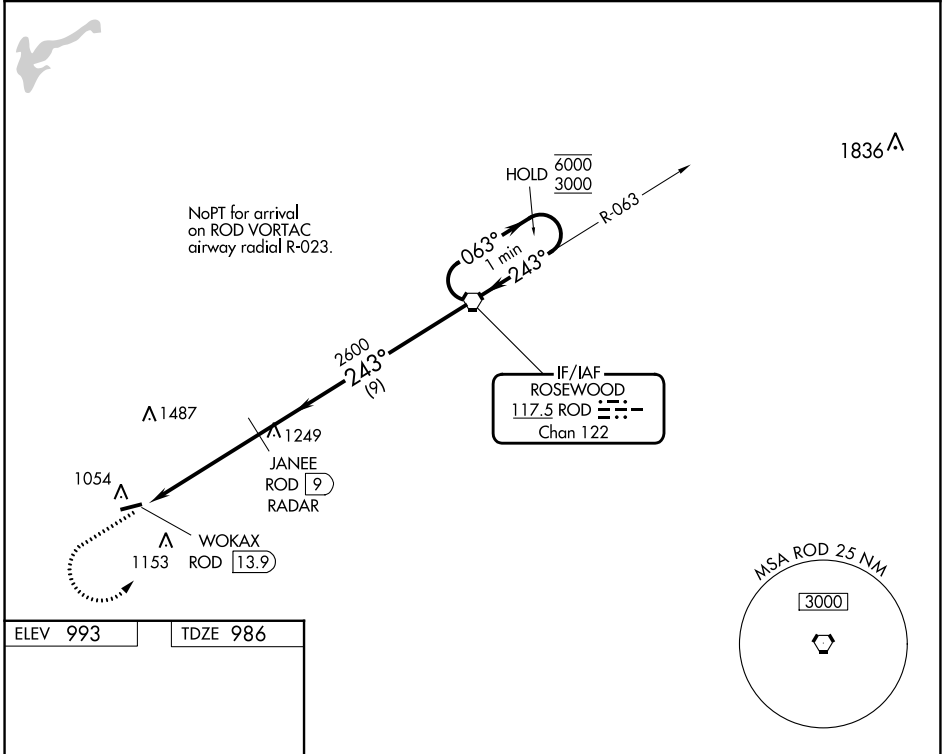


VORTAC ROD 117.5 Chan 122	APP CRS 243°	Rwy Idg TDZE Aprt Elev	3998 986 993
---	------------------------	------------------------------	---

VOR RWY 26
PIQUA/HARTZELL FLD (I17)

DME or RADAR required.		MISSED APPROACH: Climb to 3000 then left turn direct ROD VORTAC and hold.	
▼ Rwy 26 helicopter visibility reduction below 3/4 SM NA. ▲ NA Use James M Cox Dayton Intl altimeter setting.		DAY ASOS 125.8	VES AWOS-3T 125.9
		COLUMBUS APP CON 134.45 294.5 352.05	UNICOM 123.0 (CTAF) 0



ELEV 993	TDZE 986
----------	----------

MIRL Rwy 8-26
REIL Rws 8 and 26

FAF to MAP 4.9 NM					
Knots	60	90	120	150	180
Min:Sec	4:54	3:16	2:27	1:58	1:38

3000 ↑ ROD ⬤	WOKAX ROD 13.9 ⚡ 3.01° TCH 37	JANEY ROD 9 RADAR	One Minute Holding Pattern ROD VORTAC	
			6000 ← 243°	3000 → 063°
4.9 NM		9 NM		
CATEGORY	A	B	C	D
S-26	1500-1	514 (600-1)	1500-1 3/8	514 (600-1 3/8)
CIRCLING	1500-1 507 (600-1)	1560-1 567 (600-1)	1560-1 1/2 567 (600-1 1/2)	1880-3 887 (900-3)

EC-2, 31 OCT 2024 to 28 NOV 2024

EC-2, 31 OCT 2024 to 28 NOV 2024