

HI-TACAN Z RWY 30

TACAN MIB Chan 96	APCH CRS 292°	Rwy Idg 13,198 TDZE 1646 Arprt Elev 1666
--------------------------	----------------------	---

[USAF]

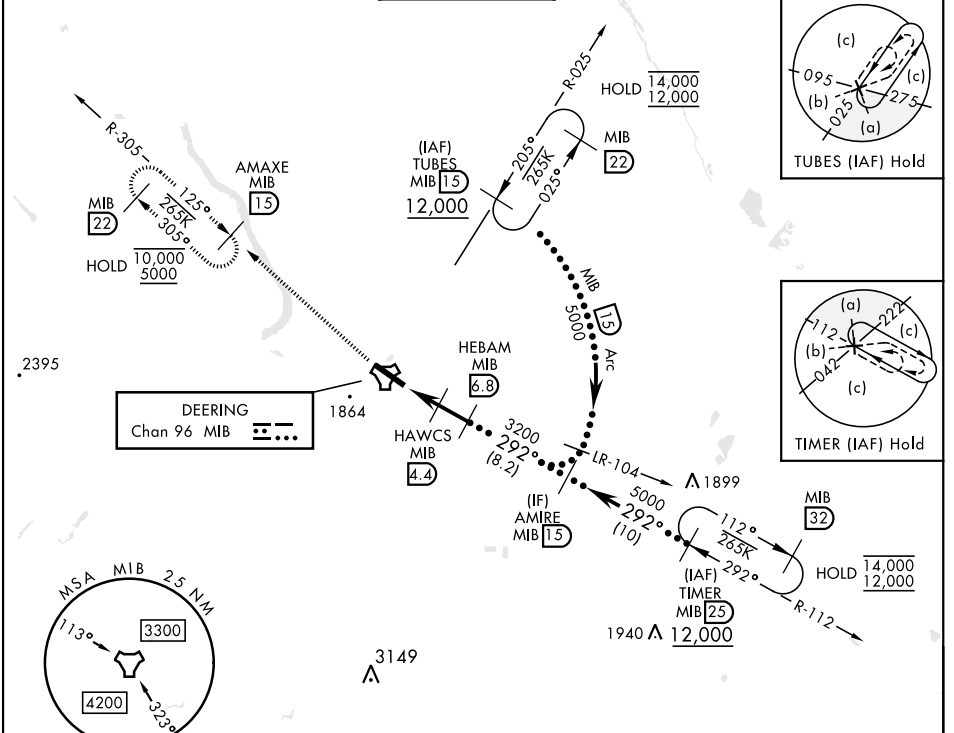
MINOT AFB (KMIB)

* When ALS inop, increase CAT CDE vis to 1½ miles.
 ** Circling not authorized N of Rwy 12-30.



MISSED APPROACH: Climb to 5000 via MIB TACAN R-305 direct AMAXE and hold.

ATIS ★ 278.8	MINOT APP CON 119.6 363.8	MINOT TOWER ★ 120.65 253.5	GND CON 134.0 275.8	CLNC DEL 326.2
---------------------	----------------------------------	-----------------------------------	----------------------------	-----------------------

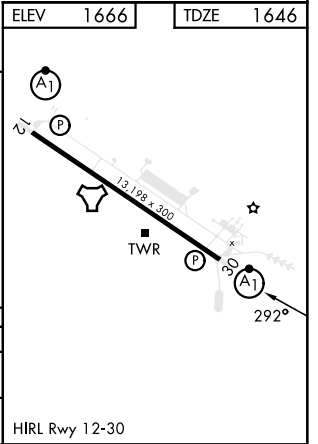


NC-1, 31 OCT 2024 to 28 NOV 2024

NC-1, 31 OCT 2024 to 28 NOV 2024

ELEV 1666	TDZE 1646
------------------	------------------

5000	AMAXE MIB R-305	AMAXE MIB 15	HEBAM MIB 6.8	AMIRE MIB 15	5000
MIB TACAN	MIB 3.2	HAWCS MIB 4.4	HEBAM MIB 6.8	AMIRE MIB 15	5000
GEVGE MIB 1.9	MIB 3.2	HAWCS MIB 4.4	HEBAM MIB 6.8	AMIRE MIB 15	5000
0.4	2.5 NM	2.4 NM			
2520	2.62°	TCH 49	3200	292°	
CATEGORY	C	D	E		
S-30 *	2100/45	454 (500-7/8)			
CIRCLING **	2180-1½ 514 (600-1½)	2320-2 654 (700-2)	2320-2¼ 654 (700-2¼)		



HI-TACAN Z RWY 30