

MINOT, NORTH DAKOTA

COPTER RNAV (GPS) RWY 30

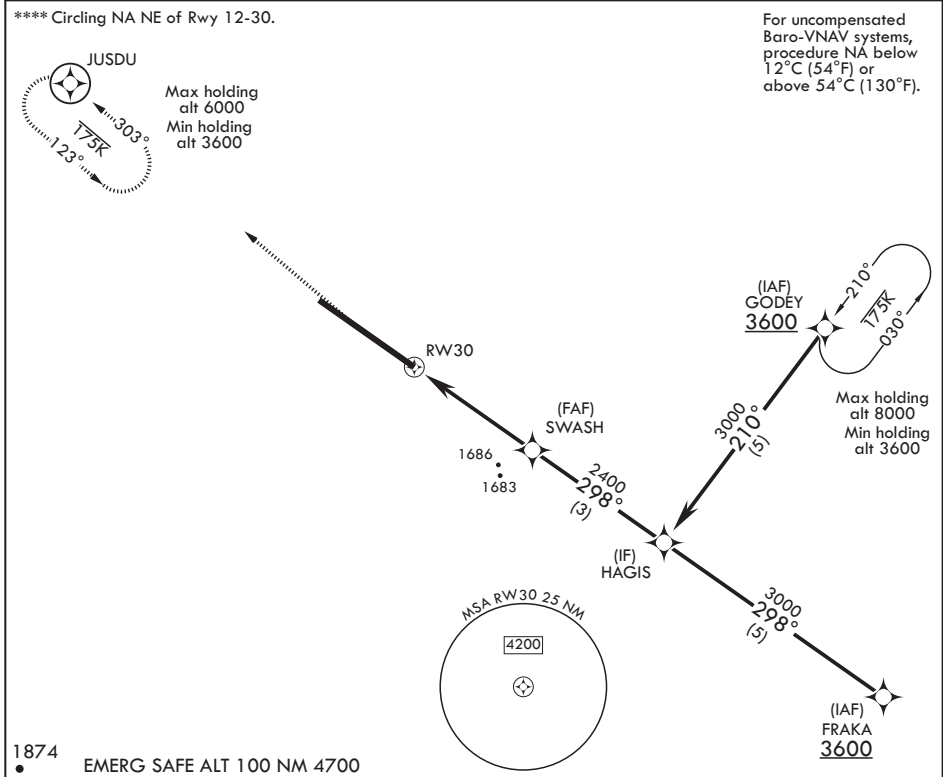
WAAS CH 91355 W30A	APCH CRS 298°	Rwy ldg TDZE Arprt Elev	13,198 1646 1666
--------------------------	------------------	-------------------------------	------------------------

AL-5013 (USAF)

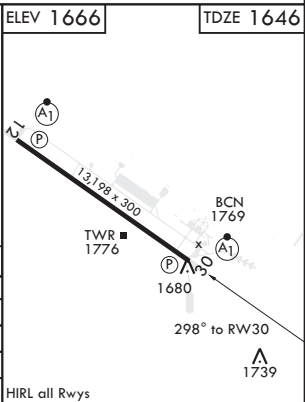
MINOT AFB (KMIB)

* When ALS inop, increase CAT A RVR to 40, vis to 3/4 mile. ** When ALS inop, increase CAT A vis to 1 5/8 miles. *** When ALS inop, increase CAT A RVR to 55, vis to 1 mile.	ALSF-1 	MISSED APPROACH: Climb to 2100 then climbing right turn to 3600 direct JUSDU and hold, continue climb-in-hold to 3600.
--	------------	--

ATIS * 278.8	APP CON 119.6 363.8	TOWER * 120.65 253.5	GND CON 134.0 275.8	CLNC DEL 326.2
-----------------	------------------------	-------------------------	------------------------	-------------------



1874 ●	EMERG SAFE ALT 100 NM 4700		ELEV 1666	TDZE 1646
2100 ↑	3600 ↻	JUSDU	HAGIS	
† NNAV only		SWASH	3000	
RW30	† 1.3 NM to RW30	2400	GP 2.50°	TCH 49
2.7 NM				
CATEGORY	COPTER			
LPV DA*	1846/24	200	(200-1/4)	
LNAV/VNAV DA**	2040/60	394	(400-1 1/2)	
LNAV MDA***	2040/24	394	(400-1/2)	
C CIRCLING****	2120-1	454	(500-1)	



MINOT, NORTH DAKOTA

48°25'N - 101°21'W

MINOT AFB (KMIB)

Orig 19JUL18

COPTER RNAV (GPS) RWY 30

NC-1, 31 OCT 2024 to 28 NOV 2024

NC-1, 31 OCT 2024 to 28 NOV 2024