

MINOT, NORTH DAKOTA

COPTER RNAV (GPS) RWY 12

WAAS CH 71280 W12A	APCH CRS 118°	Rwy ldg 13,198	TDZE 1666
		Arpt Elev 1666	

AL-5013 (USAF)

MINOT AFB (KMIB)

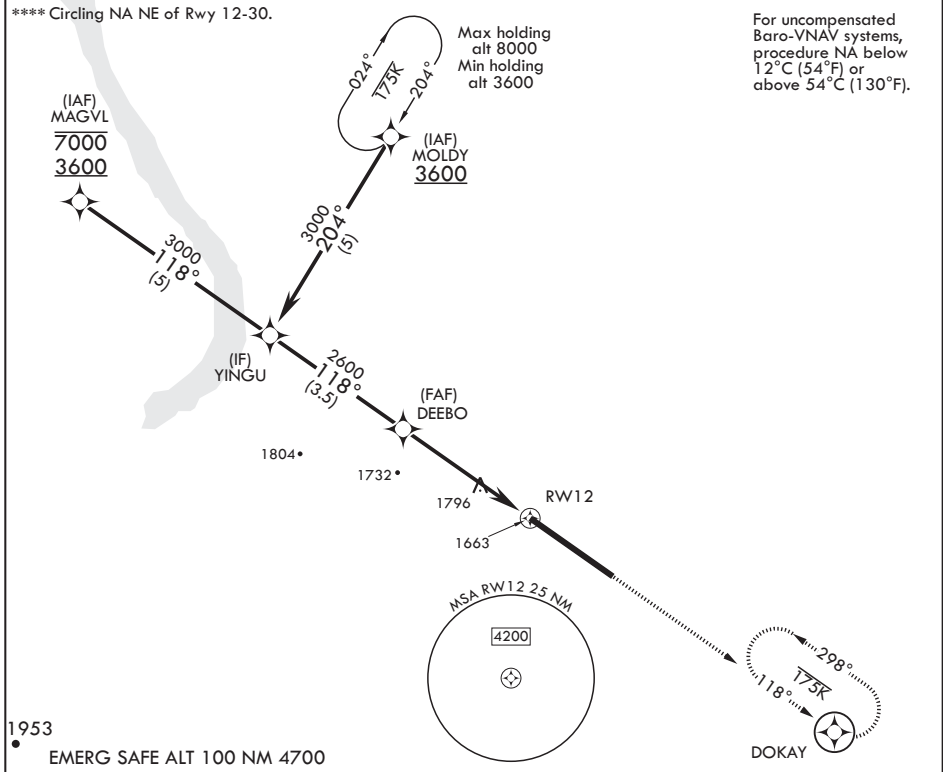
* When ALS inop, increase CAT A RVR to 40, vis to 3/4 mile.
 ** When ALS inop, increase CAT A vis to 1 5/8 miles.
 *** When ALS inop, increase CAT A RVR to 55, vis to 1 mile.



MISSED APPROACH: Climb to 3600 direct DOKAY and hold.

ATIS * 278.8	APP CON 119.6 363.8	TOWER * 120.65 253.5	GND CON 134.0 275.8	CLNC DEL 326.2
-----------------	------------------------	-------------------------	------------------------	-------------------

**** Circling NA NE of Rwy 12-30.

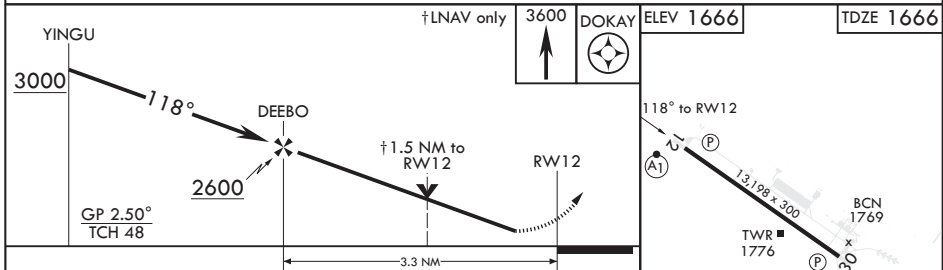


For uncompensated Baro-VNAV systems, procedure NA below 12°C (54°F) or above 54°C (130°F).

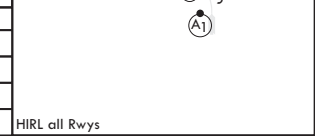
NC-1, 31 OCT 2024 to 28 NOV 2024

NC-1, 31 OCT 2024 to 28 NOV 2024

1953
EMERG SAFE ALT 100 NM 4700



CATEGORY	COPTER	
LPV DA*	1866/24	200 (200-1/4)
RNAV/VNAV DA**	2077/60	411 (500-1 1/2)
RNAV MDA***	2100/24	434 (500-1/2)
C CIRCLING****	2120-1	454 (500-1)



MINOT, NORTH DAKOTA 48°25'N - 101°21'W MINOT AFB (KMIB)

COPTER RNAV (GPS) RWY 12

Orig 19JUL18

HIRL all Rwy's