

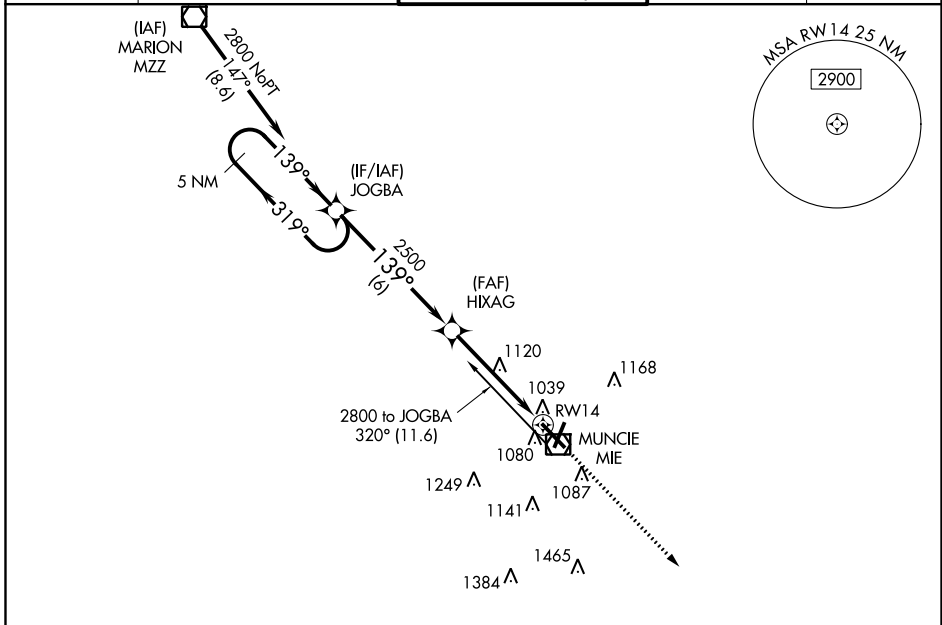
WAAS CH <b>56401</b> W14A	APP CRS <b>139°</b>	Rwy Idg TDZE Apt Elev	<b>6500</b> <b>933</b> <b>937</b>
---------------------------------	------------------------	-----------------------------	---

# RNAV (GPS) RWY 14

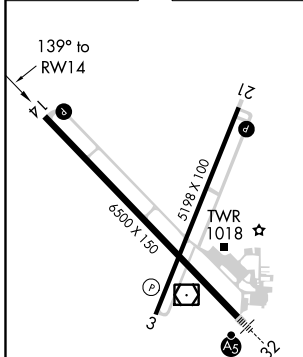
DELAWARE COUNTY RGNL (MIE)

RNP APCH.		MISSED APPROACH: Climb to 2900 direct CITUK and hold.	
<p>For uncompensated Baro-VNAV systems, LNAV/VNAV NA below -16°C (4°F) or above 47°C (116°F). Baro-VNAV and VDP NA when using Fort Wayne Intl altimeter setting. When local altimeter setting not received, use Fort Wayne Intl altimeter setting and increase LPV DA all Cats to 1375 and visibility 3/8 SM, LNAV/VNAV DA all Cats to 1410 and visibility 1/8 SM; increase all MDA 140 feet and LNAV Cat C 1/2 SM and Cat D 1/4 SM, Circling visibility Cat C/D 1/2 SM.</p>			

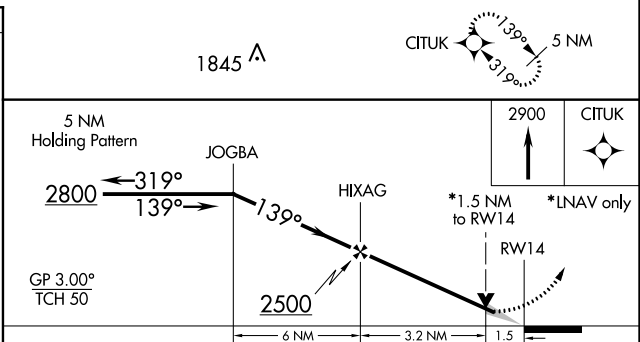
ATIS <b>133.25</b>	INDIANAPOLIS APP CON <b>120.65 317.8</b>	MUNCIE TOWER ★ <b>120.1</b> (CTAF) <b>0</b>	GND CON <b>121.9</b>	UNICOM <b>122.95</b>
-----------------------	---	--	-------------------------	-------------------------



ELEV 937	<b>D</b>	TDZE 933
----------	----------	----------



- HIRL Rwy 14-32 **0**
- MIRL Rwy 3-21 **0**
- REIL Rwy 3, 14 and 21 **0**



CATEGORY	A	B	C	D
LPV DA	1254-1 321 (400-1)			
LNAV/VNAV DA	1289-1¼ 356 (400-1¼)			
LNAV MDA	1420-1	487 (500-1)	1420-1¼ 487 (500-1¼)	1420-1½ 487 (500-1½)
<b>C</b> CIRCLING	1460-1¼	523 (600-1¼)	1480-1½ 543 (600-1½)	1560-2 623 (700-2)

EC-2, 02 DEC 2021 to 30 DEC 2021

EC-2, 02 DEC 2021 to 30 DEC 2021