


LOC I-JNK <b>109.1</b>	APP CRS <b>319°</b>	Rwy Idg <b>6500</b>
		TDZE <b>937</b>
		Apt Elev <b>937</b>

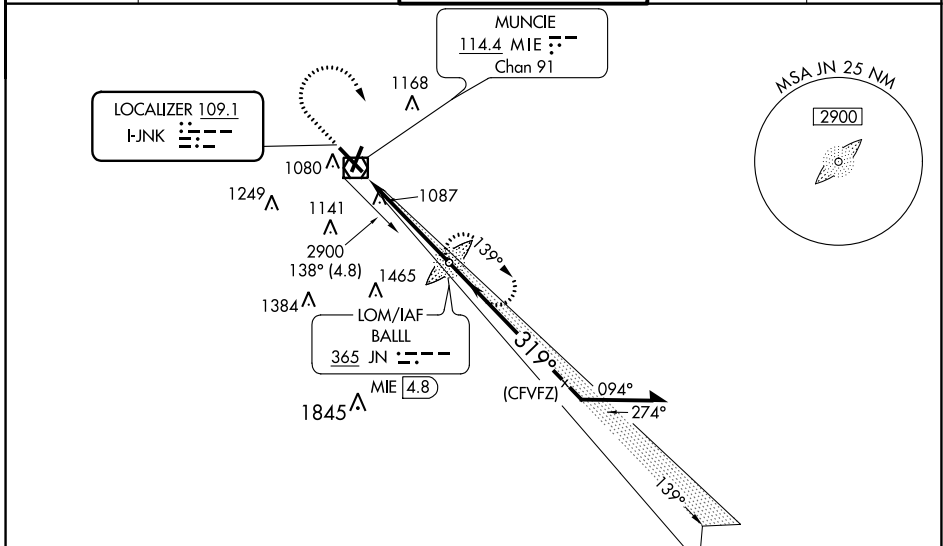
# ILS or LOC RWY 32

DELAWARE COUNTY RGNL (MIE)

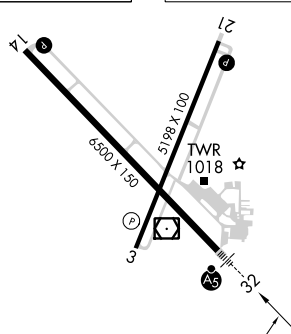
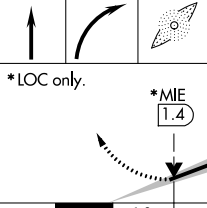
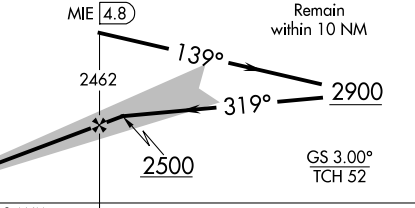
**⚠** When control tower closed, except for operations with approved weather reporting use Fort Wayne altimeter setting. For inop MALSRS when using Fort Wayne altimeter setting minimums, increase S-ILS 32 visibility to 1 SM. When local altimeter setting not received, use Fort Wayne altimeter setting: increase DA to 1257 feet and visibility all Cats 1/2 SM; increase all MDAs 120 feet and visibility Cat C 5/8 SM, Cat D 1 1/8 SM. VDP NA when using Fort Wayne altimeter setting.

**MALSRS**  
  
**MISSED APPROACH:** Climb to 1460 then climbing right turn to 2900 direct BALL LOM and hold.

ATIS <b>133.25</b>	INDIANAPOLIS APP CON <b>120.65 317.8</b>	MUNCIE TOWER ★ <b>120.1 (CTAF)</b>	GND CON <b>121.9</b>	UNICOM <b>122.95</b>
-----------------------	---	---------------------------------------	-------------------------	-------------------------



**ADF or DME REQUIRED**

ELEV 937	<b>D</b> TDZE 937	1460	2900	JN	JN LOM MIE 4.8	Remain within 10 NM																																									
																																															
HIRL Rwy 14-32 MIRL Rwy 3-21 REIL Rwys 3, 14 and 21 FAF to MAP 4.6 NM		<table border="1"> <thead> <tr> <th>CATEGORY</th> <th>A</th> <th>B</th> <th>C</th> <th>D</th> </tr> </thead> <tbody> <tr> <td>S-ILS 32</td> <td colspan="4">1137-1/2 200 (200-1/2)</td> </tr> <tr> <td>S-LOC 32</td> <td>1380-1/2</td> <td>443 (500-1/2)</td> <td>1380-7/8</td> <td>443 (500-7/8)</td> </tr> <tr> <td><b>C</b> CIRCLING</td> <td>1460-1</td> <td>523 (600-1)</td> <td>1500-1 1/2 563 (600-1 1/2)</td> <td>1600-2 663 (700-2)</td> </tr> <tr> <td colspan="6">FORT WAYNE ALTIMETER SETTING MINIMUMS</td> </tr> <tr> <td>S-ILS 32</td> <td colspan="4">1257-5/8 320 (400-5/8)</td> </tr> <tr> <td>S-LOC 32</td> <td>1520-1/2</td> <td>583 (600-1/2)</td> <td>1520-1 1/2 583 (600-1 1/2)</td> <td>1520-2 1/2 583 (600-2 1/2)</td> </tr> <tr> <td><b>C</b> CIRCLING</td> <td>1580-1</td> <td>643 (700-1)</td> <td>1600-1 3/4 663 (700-1 3/4)</td> <td>1720-2 1/2 783 (800-2 1/2)</td> </tr> </tbody> </table>					CATEGORY	A	B	C	D	S-ILS 32	1137-1/2 200 (200-1/2)				S-LOC 32	1380-1/2	443 (500-1/2)	1380-7/8	443 (500-7/8)	<b>C</b> CIRCLING	1460-1	523 (600-1)	1500-1 1/2 563 (600-1 1/2)	1600-2 663 (700-2)	FORT WAYNE ALTIMETER SETTING MINIMUMS						S-ILS 32	1257-5/8 320 (400-5/8)				S-LOC 32	1520-1/2	583 (600-1/2)	1520-1 1/2 583 (600-1 1/2)	1520-2 1/2 583 (600-2 1/2)	<b>C</b> CIRCLING	1580-1	643 (700-1)	1600-1 3/4 663 (700-1 3/4)	1720-2 1/2 783 (800-2 1/2)
CATEGORY	A	B	C	D																																											
S-ILS 32	1137-1/2 200 (200-1/2)																																														
S-LOC 32	1380-1/2	443 (500-1/2)	1380-7/8	443 (500-7/8)																																											
<b>C</b> CIRCLING	1460-1	523 (600-1)	1500-1 1/2 563 (600-1 1/2)	1600-2 663 (700-2)																																											
FORT WAYNE ALTIMETER SETTING MINIMUMS																																															
S-ILS 32	1257-5/8 320 (400-5/8)																																														
S-LOC 32	1520-1/2	583 (600-1/2)	1520-1 1/2 583 (600-1 1/2)	1520-2 1/2 583 (600-2 1/2)																																											
<b>C</b> CIRCLING	1580-1	643 (700-1)	1600-1 3/4 663 (700-1 3/4)	1720-2 1/2 783 (800-2 1/2)																																											
Knots: 60 90 120 150 180 Min:Sec: 4:36 3:04 2:18 1:50 1:32																																															

EC-2, 02 DEC 2021 to 30 DEC 2021

EC-2, 02 DEC 2021 to 30 DEC 2021