

LOC I-AVA 111.3	APCH CRS 177°	Rwy Idg 12,351 TDZE 900 Arprt Elev 911
---------------------------	-------------------------	--

[USAF]

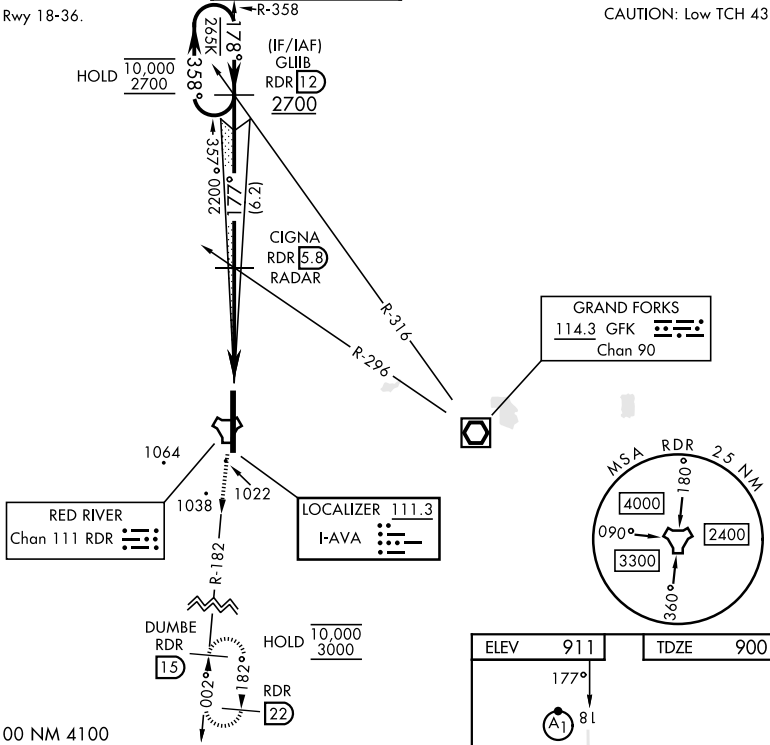
GRAND FORKS AFB (KRDR)

RADAR or DME required.	ALSIF-1 	MISSED APPROACH: Climb to 3000 on RDR TACAN R-182 to DUMBE and hold.
------------------------	-------------	--

ATIS 273.45	APP CON 118.1 318.1	RED RIVER TOWER 124.9 349.0	GND CON 119.15 275.8	CLNC DEL 119.15 360.7
-----------------------	-------------------------------	---------------------------------------	--------------------------------	---------------------------------

***Circling NA E of Rwy 18-36.

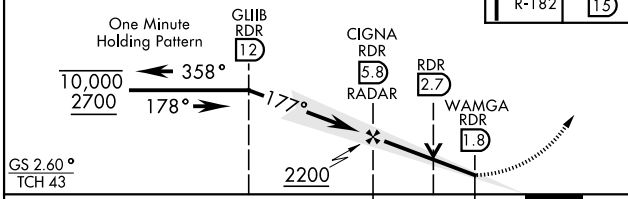
CAUTION: Low TCH 43



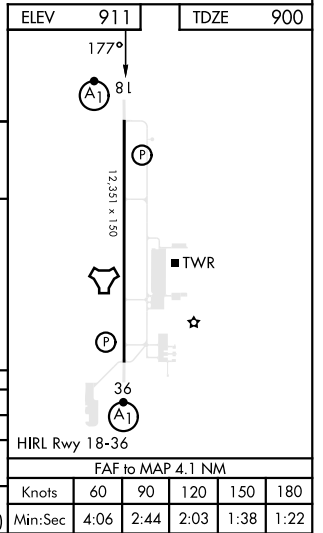
1339
EMERG SAFE ALT 100 NM 4100

VGSI and ILS glidepath not coincident (VGSI Angle 2.60/TCH 48).

3000 RDR R-182	DUMBE RDR 15
----------------	--------------



GS 2.60° TCH 43	10,000 / 2700	178°	177°	2200	4.1 NM	0.5 NM
CATEGORY	A	B	C	D	E	
S-ILS 18*	1100/24		200	(200-½)		
S-LOC 18**	1340/24	440 (500-½)	1340/40	440	(500-¾)	
CIRCLING***	1340-1 429 (500-1)	1380-1 469 (500-1)	1380-1½ 469 (500-1½)	1540-2 629 (700-2)	1560-2¼ 649 (700-2¼)	



NC-1, 31 OCT 2024 to 28 NOV 2024

NC-1, 31 OCT 2024 to 28 NOV 2024