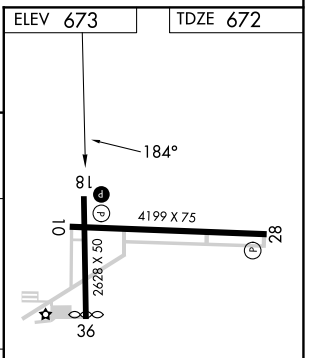
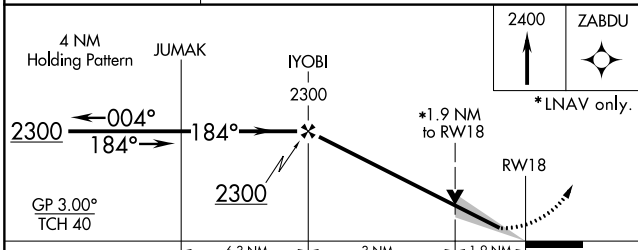
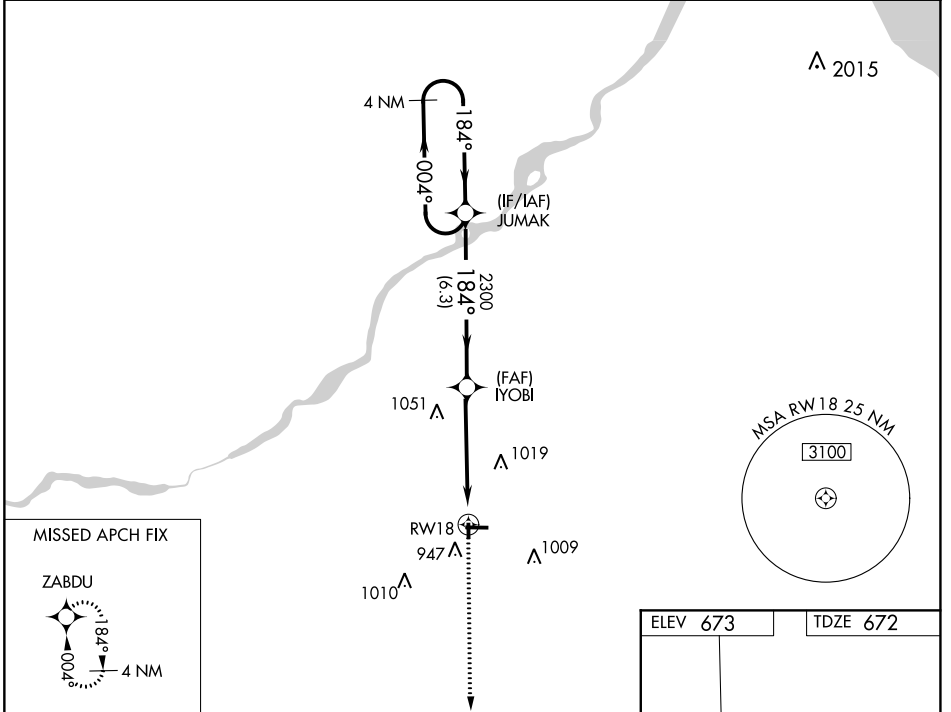


WAAS CH <b>97403</b> <b>W18A</b>	APP CRS <b>184°</b>	Rwy Idg <b>2628</b> TDZE <b>672</b> Apt Elev <b>673</b>
--	------------------------	---

# RNAV (GPS) RWY 18

WOOD COUNTY (1G~~0~~)

RNP APCH.			MISSED APPROACH: Climb to 2400 direct ZABDU and hold.
<p><b>▼</b> Circling Rwy 36 NA at night. VDP NA when using Toledo Express altimeter setting.  <b>▲</b> NA When local altimeter setting not received, use Toledo Express altimeter setting and increase DA to 957 feet; increase all MDAs 40 feet.</p>			
AWOS-3 <b>120.725</b>	TOLEDO APP CON <b>126.1 317.55</b>	CLNC DEL <b>125.6</b>	UNICOM <b>122.975</b> (CTAF) <b>0</b>



CATEGORY	A	B	C	D
LPV DA	922-1	250 (300-1)		NA
LNAV MDA	1320-1	648 (700-1)		NA
<b>C</b> CIRCLING	1320-1	647 (700-1)		NA

ELEV 673	TDZE 672
REIL Rwys 10, 18 and 28 <b>0</b> MRL Rwys 10-28 and 18-36 <b>0</b>	

EC-2, 31 OCT 2024 to 28 NOV 2024

EC-2, 31 OCT 2024 to 28 NOV 2024